



*INVESTMENT MOTTO: Every cycle offers risk and return. Investing is all about how you manage each cycle to get the best out of it.*

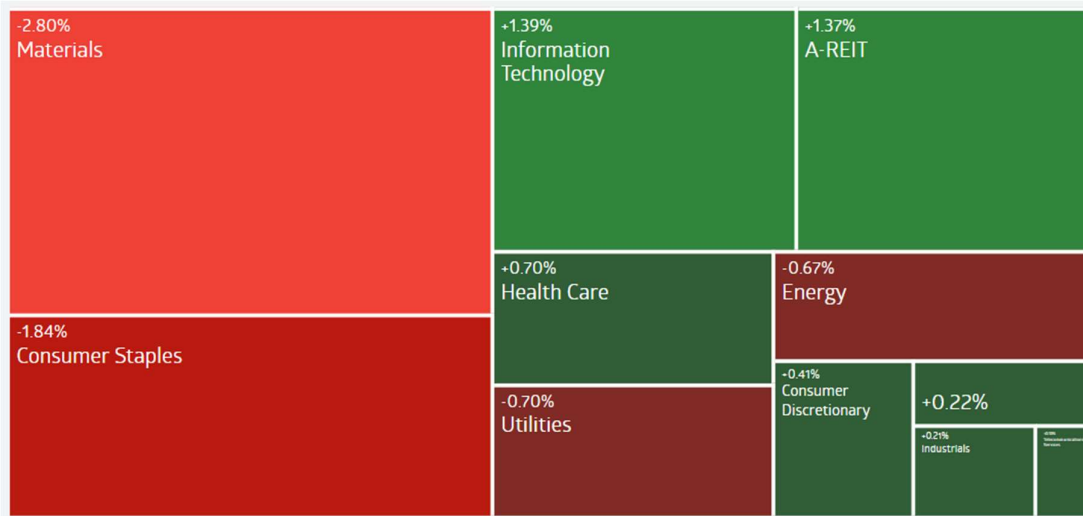
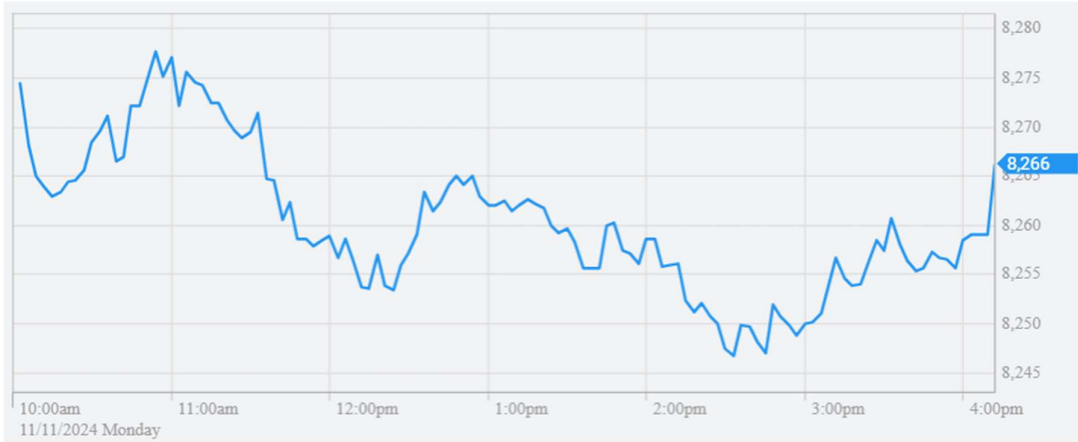
## MARKET COMMENTARY

The Aussie market starts the new week with a negative day as Iron Ore extends falls from Friday as another China stimulus hopium fades with economic reality. China continues to deliver targeted stimulus to prepare for trade wars while markets are pricing DotCom multiples into a global growth slowdown. The US Fed is cutting rates while the bond market is raising yields. There is no emergency in any economic data except for the interest payment on the debt for the US government has become bigger than their defense spending. The interest payment is now the main driver of debt growth and that puts US into a debt “death loop”. The newly elected government in the US has policy settings that will raise tariffs and drive debt even higher by cutting taxes. Of unsustainable debt growth. China is not going to stimulate another property bubble when there is a trade war coming. The US economy is nothing like 2016/17 to cut taxes, raise tariffs and grow debt. Bond yields are likely to keep rising despite US Fed cuts. Global funds are being forced to keep buying banks to hold the local market up. Eventually they are going to run out of fire power and there is no one else left who will pay these extreme valuations. RSG bashing today shows that sovereign risk is a big risk in slowing global growth. It may be different this time!

CNBC on Trade Wars > Donald Trump’s victory in U.S. elections has raised the specter of higher tariffs on China — but it may not be the only Asian country that faces this predicament, according to Goldman Sachs. While the U.S. bilateral trade deficit with China has decreased somewhat since the Trump administration, deficits with other Asian exporters have risen significantly and may come under increased scrutiny. With Trump and some likely appointees focused on reducing bilateral deficits, there is a risk that — in a sort of “whack-a-mole” manner--burgeoning bilateral deficits could eventually prompt U.S. tariffs on other Asian economies. A tariff is a tax on imported goods, but it isn’t paid by the exporting country. So U.S. tariffs will be paid by companies looking to import products into the country, raising their costs for US consumers.

CNBC on Chinese Consumers and US Corporates > Tesla and SpaceX CEO Elon Musk, the billionaire backer of newly minted President-elect Donald Trump, endorsed the idea of allowing presidents to intervene on Federal Reserve policy. In response to a Thursday social media post from Sen. Mike Lee, R-Utah, which called for the Fed to be under the direction of the president, Musk on Friday posted the “100” emoji used to convey agreement. Sen. Lee had punctuated his post with “#EndtheFed.” Though brief, Musk’s comment reflects a broader pressure campaign on Fed independence that could take shape in the next Trump administration. On Thursday, Fed Chair Jerome Powell said he would not resign from his post if Trump asked him to do so.

Historically, 75% of retail investors have experienced losses during positive market periods. Investors are now facing market cycles that are unprecedented in their lifetime, making risk management a crucial aspect of investing. Going forward, the trend towards active investing is reemerging as investors seek quality, relative value, profitability, and dividends. To navigate this new paradigm, it's important to have an active investment strategy that is flexible and adaptable to changing market conditions!



Security	Last	+/-	%	Security	Last	+/-	%	Security	Last	+/-	%
S&P 300	8201.00	-29.20	-0.35	DXY	104.9600	0.0700	0.07	SPTGLD	2671.55	-12.97	-0.48
S&P 200	8266.20	-28.90	-0.35	AUDUSD	0.6590	0.0001	0.02	TWI	62.10	-0.30	-0.48
Mid Cap	10184.60	-45.10	-0.44	NZDAUD	0.9062	0.0004	0.05	WTIS	70.37	-0.01	-0.01
Small Cap	3155.60	-14.00	-0.44	GBPAUD	1.9592	-0.0023	-0.12	BRENT	73.95	0.08	0.11
Micro Cap	2297.00	4.40	0.19	EUROAUD	1.6261	-0.0009	-0.05	COPP3M	9457.00	-72.00	-0.76
NZ50G	12686.33	-84.00	-0.66	EURUSD	1.0716	0.0005	0.05	NICK3M	16385.00	-125.00	-0.76
JAPAN	39533.32	32.95	0.08	USDJPY	153.4360	0.7310	0.48	ZINC	2967.00	-85.00	-2.79
KOSPI	2531.66	-29.49	-1.15	CNYUSD	0.1392	-0.0001	-0.06	<b>Security</b>	<b>Last</b>	<b>+/-</b>	<b>%</b>
SING	3727.87	3.50	0.09	<b>Security</b>	<b>Last</b>	<b>+/-</b>	<b>%</b>	DOWFUT	44192.00	51.00	0.12
SHANGHAI	3471.12	18.83	0.55	USBON	4.3062	0.0000	0.00	NASFUT	21285.75	54.50	0.26
HNGKNG	20407.58	-320.61	-1.55	USLBR	4.4705	0.0000	0.00	SPFUT	6037.00	11.75	0.20
GERMAN	19215.48	0.00	0.00	BOND10	4.5790	0.0060	0.13				
CAC40	7338.67	0.00	0.00	BBSR3M	4.4192	0.0042	0.10				
FTSE	8072.39	-68.35	-0.84	VIX	14.94	-0.26	-1.71				
DOWJON	43988.99	259.65	0.59	XVI	11.26	0.08	0.71				
NASDAQ	19286.78	17.32	0.09								
SP500	5995.54	22.44	0.38								

Sources: AFR, AAP, ASX, Bloomberg, CNBC, CNN, FactSet, Hedgeye, IRESS, Market Watch, Reuters, S&P, Trading Economics

Annual inflation rate in Brazil increased to 4.76% in October 2024, the highest value in a year, compared to 4.42% in September and forecasts of 4.72%. Prices accelerated for food and beverages (6.65% vs 5.86%), housing & utilities (6.12% vs 4.58%). Conversely, inflation eased for transportation (2.48% vs 3.22%). Compared to the previous month, the CPI went up 0.56%, the biggest increase since February and roughly in line with expectations. Biggest upward pressure came from cost of housing (1.49%), mostly residential electricity (4.74%) and food and beverages (1.06%), particularly meat (5.81%). Inflation remains significantly above the central bank's 3% target, exceeding the upper tolerance limit of 4.5%. A severe drought has driven up crop and energy prices, while a weaker real, robust economic activity, and expectations of expansionary fiscal policy have also contributed to rising inflationary pressures. In response, the central bank has already implemented two rate hikes this year.

The unemployment rate in Canada was at 6.5% in October of 2024, remaining unchanged from the previous month and slightly below market expectations that it would have bounced back to the near 3-year high of 6.6% from August. The result further alleviated concerns that the Canadian economy would not be able to halt the marked softening in the labor market undergone in the second half of the year. The unemployed population rose by 900 people to 1,429,000. In turn, net employment rose by 14,500 to 20,596,900 but missed market expectations that it would rise by 25,000. Joblessness fell sharply for the youth (-20,800 to 403,400), offsetting a sharper increase in the core aged population (21,300 to 803,900), while that for the older population was loosely unchanged. In the meantime, the labor force participation rate eased by 0.1 percentage points from the previous month to 64.8%, the lowest since January 2021.

The University of Michigan consumer sentiment for the US increased to 73 in November 2024, the highest in seven months, compared to 70.5 in October and above forecasts of 71, preliminary estimates showed. However, the reading do not capture any reactions to election results. The expectations index soared to 78.5, the highest since July 2021, from 74.1 in the previous month. Expectations over personal finances climbed 6% in part due to strengthening income prospects, and short-run business conditions soared 9%. Long-run business conditions increased to its most favorable reading in nearly four years. On the other hand, the current conditions gauge fell to 64.4 from 64.9.

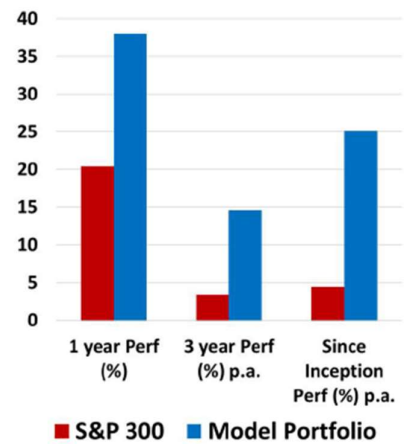
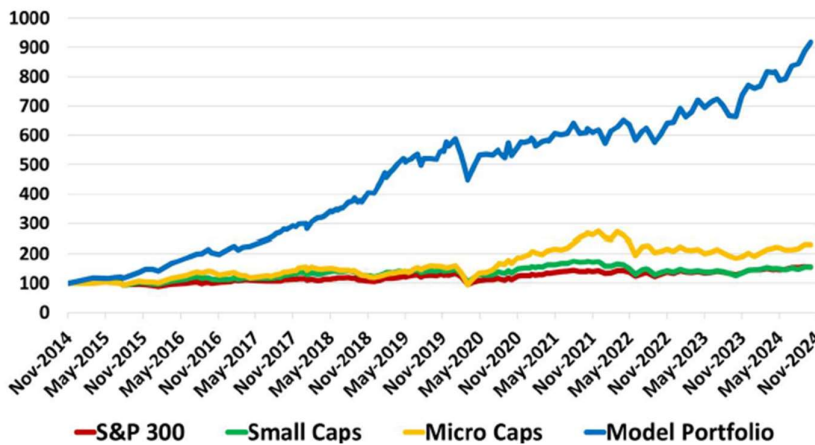
China's annual inflation rate stood at 0.3% in October 2024, compared with market estimates and September's figure of 0.4%. This marked the ninth straight month of consumer inflation but the lowest reading since June, underscoring rising deflation risks despite Beijing's stimulus measures in late September to support the slowing economy. Non-food prices continued to decline (-0.3% vs -0.2% in September), largely driven by further drops in the cost of transport (-4.8% vs -4.1%) and housing (-0.1% vs -0.1%). In contrast, prices increased for healthcare (1.1% vs 1.2%) and education (0.8% vs 0.6%). On the food side, prices moderated after experiencing their sharpest rise in 20 months in September (2.9% vs 3.3%). Core consumer prices, excluding food and energy, rose 0.2% yoy after the smallest gain since February 2021 of 0.1% in September. Monthly, the CPI fell by 0.3%, exceeding the consensus of a 0.1% decline, following a flat reading in September.

## Global Markets

The US market had a positive close after coming off the day's high. All the election and Fed trades were jammed through and that meant moves were non correlated. Canadian employment data was better than expected. Latest China stimulus update was underwhelming. European and American ex US markets were negative. RUSSELL +0.71%, DOW +0.59%, S&P +0.38% and NASDAQ +0.09%. VIX ticked just below 15. Long yields were tick lower while short yields and USD were higher. Commodities were lower with gold being the best of the lot. Given the move in bond yields, mortgage rates are higher than they were before both rate cuts in the US.

# Deep Data Analytics provides the framework and support to make you a professional investor!

Yield investing can outperform in an expensive market with risk management!



For more market and investment strategies,

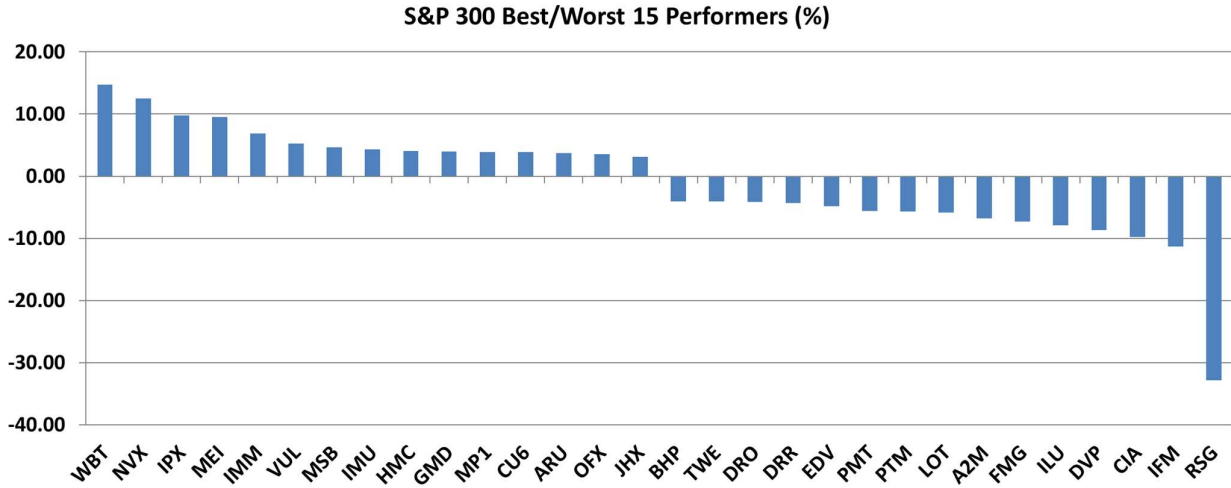
visit...

[www.deepdataanalytics.com.au](http://www.deepdataanalytics.com.au)

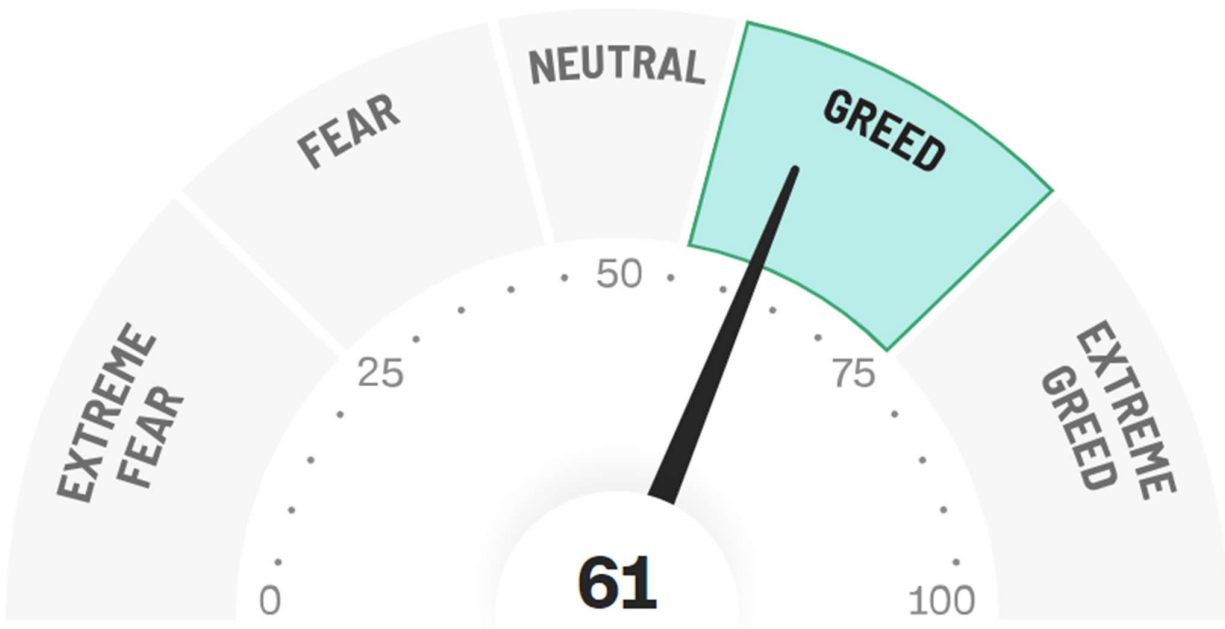
or email...

[info@deepdataanalytics.com.au](mailto:info@deepdataanalytics.com.au)

### 1. Movers and Shakers in S&P 300 >



### 2. CNN Fear & Greed Index >



# TODAY'S BEST 30 IN S&P 300

Code	Company Name	Market Cap (\$m)	Price (\$)	Daily Price Change (%)	Newsflash
WBT	Weebit Nano Ltd	451.97	2.73	14.71	N/A
NVX	Novonix Limited	355.50	0.81	12.50	NOVONIX and Stellantis Sign Binding Offtake Agreement
IPX	Iperionx Limited	1113.98	4.15	9.79	N/A
MEI	Meteoric Resources	241.36	0.12	9.52	N/A
IMM	Immutep Ltd	421.82	0.31	6.90	N/A
VUL	Vulcan Energy	927.77	5.19	5.27	N/A
MSB	Mesoblast Limited	1592.79	1.46	4.66	N/A
IMU	Imugene Limited	342.16	0.05	4.35	onCARlytics Trial Doses First Patient in IT Combination Arm
HMC	HMC Capital Limited	4279.38	10.80	4.05	Acquisition of iseek and DigiCo Platform Update
GMD	Genesis Minerals	2527.95	2.33	4.02	Strong drill results support accelerated growth
MP1	Megaport Limited	1184.83	7.69	3.92	N/A
CU6	Clarity Pharma	2305.52	7.48	3.89	Clarity and Nucleus RadioPharma sign MSA
ARU	Arafura Rare Earths	332.68	0.14	3.70	N/A
OFX	OFX Group Ltd	339.56	1.47	3.53	N/A
JHX	James Hardie Indust	20815.91	50.00	3.16	N/A
WC8	Wildcat Resources	395.70	0.33	3.13	N/A
ZIP	ZIP Co Ltd	4243.17	3.35	3.08	N/A
CMM	Capricorn Metals	2560.10	6.41	2.89	N/A
LNW	Light & Wonder Inc.	3894.40	157.29	2.86	N/A
CTT	Cettire	547.08	1.48	2.79	Change of Director's Interest Notice
COH	Cochlear Limited	19173.42	300.93	2.73	N/A
SIQ	Smartgrp Corporation	1054.71	8.07	2.54	N/A
GMG	Goodman Group	68243.99	36.60	2.52	N/A
GTK	Gentrack Group Ltd	953.88	9.43	2.50	N/A
MAQ	Macquarie Technology	2268.09	90.15	2.44	N/A
PNI	Pinnacle Investment	4266.56	21.51	2.43	N/A
EMR	Emerald Res NL	2529.62	3.94	2.34	N/A
NWS	News Corp..	1460.92	49.32	2.28	N/A
STX	Strike Energy Ltd	644.71	0.23	2.22	N/A
URW	Unibailrodawestfield	647.48	5.98	2.22	N/A

# TODAY'S WORST 30 IN S&P 300

Code	Company Name	Market Cap (\$m)	Price (\$)	Daily Price Change (%)	Newsflash
RSG	Resolute Mining	1426.46	0.45	-32.84	Company Statement regarding Mali
IFM	Infomedia Ltd	548.65	1.30	-11.30	Revised Revenue Guidance Range
CIA	Champion Iron Ltd	3239.07	5.64	-9.76	QUOTED: Ex Dividend
DVP	Develop Global Ltd	656.85	2.21	-8.68	N/A
ILU	Iluka Resources	2496.63	5.37	-7.89	N/A
FMG	Fortescue Ltd	60193.76	18.12	-7.31	N/A
A2M	The A2 Milk Company	3822.82	4.92	-6.82	N/A
LOT	Lotus Resources Ltd	535.81	0.24	-5.88	N/A
PTM	Platinum Asset	721.89	1.17	-5.65	N/A
PMT	Patriotbattery metals	212.42	0.34	-5.56	N/A
EDV	Endeavour	8471.34	4.50	-4.86	F25 First Quarter Trading Update
DRR	Deterra	1967.17	3.56	-4.30	N/A
DRO	Droneshield Limited	741.30	0.82	-4.12	N/A
TWE	Treasury Wine Estate	9315.18	11.01	-4.09	N/A
BHP	BHP Group Limited	220207.31	41.63	-4.08	N/A
MIN	Mineral Resources.	7560.07	36.95	-3.95	N/A
CRN	Coronado Global Res	1709.98	0.98	-3.92	N/A
TPW	Temple & Webster Ltd	1368.35	11.06	-3.91	N/A
NUF	Nufarm Limited	1500.93	3.77	-3.83	N/A
ADT	Adriatic Metals	1151.18	3.99	-3.62	N/A
ELD	Elders Limited	1417.63	8.65	-3.57	N/A
BMN	Bannerman Energy Ltd	526.91	2.85	-3.39	N/A
NIC	Nickel Industries	3989.52	0.90	-3.23	N/A
CHN	Chalice Mining Ltd	610.77	1.52	-3.18	N/A
SYA	Sayona Mining Ltd	329.39	0.03	-3.13	N/A
RIO	Rio Tinto Limited	45774.67	119.47	-3.11	N/A
BSL	BlueScope Steel Ltd	9763.46	21.58	-3.05	N/A
FPR	Fleetpartners Group	720.50	2.97	-2.94	N/A
VSL	Vulcan Steel	1033.20	7.62	-2.81	N/A
BOE	Boss Energy Ltd	1315.10	3.12	-2.80	N/A

## CHECKING S&P 300 BY THE SECTOR

### ➤ Energy stocks:

Code	Company Name	Market Cap (\$m)	Price (\$)	Daily Price Change (%)	Newsflash
ALD	Ampol Limited	6743.95	28.11	-0.67	N/A
BMN	Bannerman Energy Ltd	526.91	2.85	-3.39	N/A
BOE	Boss Energy Ltd	1315.10	3.12	-2.80	N/A
BPT	Beach Energy Limited	2920.11	1.26	-1.56	N/A
COE	Cooper Energy Ltd	448.81	0.17	0.00	N/A
DYL	Deep Yellow Limited	1280.06	1.30	-1.89	N/A
KAR	Karooon Energy Ltd	1091.08	1.38	-1.79	N/A
LOT	Lotus Resources Ltd	535.81	0.24	-5.88	N/A
NHC	New Hope Corporation	3973.08	4.68	-0.43	N/A
NXG	Nexgenenergycanada	1147.13	11.11	-0.80	N/A
PDN	Paladin Energy Ltd	2907.38	9.68	-0.41	N/A
STO	Santos Ltd	22052.38	6.73	-0.88	N/A
STX	Strike Energy Ltd	644.71	0.23	2.22	N/A
VEA	Viva Energy Group	4194.34	2.56	-2.66	N/A
WDS	Woodside Energy	45702.91	24.02	-0.21	N/A
WHC	Whitehaven Coal	5739.08	6.82	-0.58	N/A
YAL	Yancoal Aust Ltd	8728.10	6.45	-2.42	N/A

### ➤ Material (Ex Mining) stocks:

Code	Company Name	Market Cap (\$m)	Price (\$)	Daily Price Change (%)	Newsflash
A4N	Alpha Hpa Ltd	1089.20	0.96	0.00	N/A
AMC	Ancor PLC	9284.95	15.63	1.03	Form 8-K - AGM Result
BKW	Brickworks Limited	4083.63	26.41	-1.09	N/A
IPL	Incitec Pivot	5865.52	3.11	0.32	FY24 Results Announcement
JHX	James Hardie Indust	20815.91	50.00	3.16	N/A
LTM	Arcadium Lithium PLC	2358.15	8.08	0.37	ALTM Q3 2024 Form 10-Q
NUF	Nufarm Limited	1500.93	3.77	-3.83	N/A
ORA	Orora Limited	3224.40	2.40	0.00	N/A
ORI	Orica Limited	8590.86	17.74	0.57	N/A



➤ **Gold stocks:**

Code	Company Name	Market Cap (\$m)	Price (\$)	Daily Price Change (%)	Newsflash
BGL	Bellevue Gold Ltd	1830.40	1.42	-1.05	N/A
CMM	Capricorn Metals	2560.10	6.41	2.89	N/A
DEG	De Grey Mining	3343.48	1.37	-1.79	N/A
EMR	Emerald Res NL	2529.62	3.94	2.34	N/A
EVN	Evolution Mining Ltd	9707.38	4.87	-0.20	N/A
GMD	Genesis Minerals	2527.95	2.33	4.02	Strong drill results support accelerated growth
GOR	Gold Road Res Ltd	1978.34	1.83	0.00	Change in substantial holding for YRL
IPX	Iperionx Limited	1113.98	4.15	9.79	N/A
NEM	Newmont Corporation	8283.17	67.24	0.04	Newmont UBS Australasia Conference Presentation
NST	Northern Star	19303.21	17.00	1.25	N/A
PDI	Predictive Disc Ltd	622.99	0.27	1.89	N/A
PRU	Perseus Mining Ltd	3564.23	2.59	0.00	N/A
RMS	Ramelius Resources	2494.80	2.13	-1.39	N/A
RRL	Regis Resources	1918.91	2.56	0.79	N/A
RSG	Resolute Mining	1426.46	0.45	-32.84	Company Statement regarding Mali
SPR	Spartan Resources	1463.24	1.29	-2.28	N/A
VAU	Vault Minerals Ltd	2414.88	0.36	0.00	Investor Presentation November 2024
WAF	West African Res Ltd	1891.95	1.62	-2.71	N/A
WGX	Westgold Resources.	2735.02	2.88	-0.69	N/A

➤ **Mining (Ex Gold) stocks:**

Code	Company Name	Market Cap (\$m)	Price (\$)	Daily Price Change (%)	Newsflash
AAI	Alcoa Corporation	4027.40	67.70	-0.43	N/A
ADT	Adriatic Metals	1151.18	3.99	-3.62	N/A
ARU	Arafura Rare Earths	332.68	0.14	3.70	N/A
BHP	BHP Group Limited	220207.31	41.63	-4.08	N/A
BSL	BlueScope Steel Ltd	9763.46	21.58	-3.05	N/A
CHN	Chalice Mining Ltd	610.77	1.52	-3.18	N/A
CIA	Champion Iron Ltd	3239.07	5.64	-9.76	QUOTED: Ex Dividend
CRN	Coronado Global Res	1709.98	0.98	-3.92	N/A
CSC	Capstonecorp	1864.40	11.26	0.27	N/A
DRR	Deterra	1967.17	3.56	-4.30	N/A
DVP	Develop Global Ltd	656.85	2.21	-8.68	N/A
FMG	Fortescue Ltd	60193.76	18.12	-7.31	N/A
IGO	IGO Limited	4013.52	5.20	-1.89	N/A
ILU	Iluka Resources	2496.63	5.37	-7.89	N/A
IMD	Imdex Limited	1366.62	2.67	0.00	N/A
INR	Ioneer Ltd	506.44	0.22	0.00	N/A
LRS	Latin Resources Ltd	532.27	0.19	-2.63	Change in substantial holding
LTR	Liontown Resources	2024.97	0.84	0.60	Kathleen Valley update and H2 FY25 guidance
LYC	Lynas Rare Earths	7561.87	7.88	-2.60	N/A
MAC	Metals Acquisition	799.61	19.69	-1.55	November 2024 Corporate Presentation
MEI	Meteoric Resources	241.36	0.12	9.52	N/A
MIN	Mineral Resources.	7560.07	36.95	-3.95	N/A
NIC	Nickel Industries	3989.52	0.90	-3.23	N/A
PLS	Pilbara Min Ltd	8974.23	2.96	-0.67	N/A
PMT	Patriotbatterymetals	212.42	0.34	-5.56	N/A
PRN	Perenti Limited	1103.78	1.17	-0.43	N/A
RIO	Rio Tinto Limited	45774.67	119.47	-3.11	N/A
S32	South32 Limited	17183.71	3.70	-2.63	N/A
SFR	Sandfire Resources	4836.12	10.29	-2.46	N/A
SGM	Sims Limited	2627.65	13.34	-1.91	N/A
SMR	Stanmore Resources	2875.44	3.20	0.31	N/A
SYA	Sayona Mining Ltd	329.39	0.03	-3.13	N/A
SYR	Syrah Resources	274.25	0.26	-1.89	Syrah receives first disbursement from DFC loan
VSL	Vulcan Steel	1033.20	7.62	-2.81	N/A
VUL	Vulcan Energy	927.77	5.19	5.27	N/A
WA1	Wa1ResourcesLtd	898.59	12.99	-2.11	Fastmarkets Ferroalloys Conference Presentation
WCB	Wildcat Resources	395.70	0.33	3.13	N/A

➤ **Industrial stocks:**

Code	Company Name	Market Cap (\$m)	Price (\$)	Daily Price Change (%)	Newsflash
AIA	Auckland Internation	11216.76	6.66	-0.15	N/A
ALQ	ALS Ltd	7176.52	14.99	1.22	N/A
ALX	Atlas Arteria	7065.56	4.91	0.82	Fitch Ratings Update
ASB	Austal Limited	1228.84	3.32	-2.06	N/A
AZJ	Aurizon Holdings Ltd	6479.28	3.47	-1.42	N/A
BXB	Brambles Limited	26724.24	19.39	1.25	N/A
CPU	Computershare Ltd	16910.50	28.95	0.49	N/A
CWY	Cleanaway Waste Ltd	6179.73	2.75	-0.72	N/A
DBI	Dalrymple Bay	1660.80	3.33	-0.60	N/A
DOW	Downer EDI Limited	3834.69	5.66	-0.88	N/A
DRO	Droneshield Limited	741.30	0.82	-4.12	N/A
FBU	Fletcher Building	3063.46	2.87	0.70	N/A
GWA	GWA Group Ltd	633.84	2.37	-0.84	Change of Director's Interest Notice
IPH	IPH Limited	1482.79	5.35	-0.56	N/A
JLG	Johns Lyng Group	1147.68	4.15	1.72	N/A
KLS	Kelsian Group Ltd	1035.75	3.80	-0.52	N/A
MGH	Maas Group Holdings	1555.42	4.67	-0.85	N/A
MMS	McMillan Shakespeare	1058.57	15.40	1.32	N/A
MND	Monadelphous Group	1256.79	12.44	-2.58	N/A
NWH	NRW Holdings Limited	1783.05	3.89	-0.26	Change in substantial holding
QAN	Qantas Airways	13197.46	8.53	1.07	N/A
QUB	Qube Holdings Ltd	6739.17	3.83	0.52	Trading and Business Update
RDX	Redox Limited	1963.80	3.82	2.14	N/A
REH	Reece Limited	15374.42	23.67	-0.55	N/A
RWC	Reliance Worldwide	4056.89	5.20	0.00	N/A
SIQ	Smartgrp Corporation	1054.71	8.07	2.54	N/A
SLX	Silex Systems	1340.41	5.73	1.42	N/A
SSM	Service Stream	948.57	1.52	-1.30	N/A
SVW	Seven Group Holdings	18115.49	44.11	-0.90	UBS Conference Reference Material
TCL	Transurban Group	39699.28	12.80	0.08	NSW Government announcement on NSW toll reform
VNT	Ventiaservicesgroup	3969.45	4.66	0.43	N/A
WOR	Worley Limited	7698.49	14.28	-1.86	N/A

## ➤ Consumer stocks:

Code	Company Name	Market Cap (\$m)	Price (\$)	Daily Price Change (%)	Newsflash
ADH	Adairs Limited	455.41	2.55	-1.54	N/A
ALL	Aristocrat Leisure	40538.48	65.61	1.86	N/A
AOV	Amotiv	1493.48	10.46	-1.32	N/A
APE	Eagers Automotive	2998.82	11.51	-0.95	N/A
ARB	ARB Corporation.	3487.71	41.75	-0.64	N/A
AX1	Accent Group Ltd	1324.44	2.34	0.00	N/A
BAP	Bapcor Limited	1622.39	4.70	-1.67	N/A
BRG	Breville Group Ltd	4486.54	31.08	-0.29	N/A
CKF	Collins Foods Ltd	1004.96	8.42	-1.29	N/A
CTD	Corp Travel Limited	1832.00	12.60	0.64	N/A
CTT	Cettire	547.08	1.48	2.79	Change of Director's Interest Notice
DMP	Domino Pizza Enterpr	2820.02	30.02	-1.57	N/A
FLT	Flight Centre Travel	3606.07	16.30	0.31	N/A
GEM	G8 Education Limited	1096.88	1.33	-2.21	N/A
GYG	Guzman Y Gomez Ltd	3628.34	36.33	1.59	N/A
HVN	Harvey Norman	5644.41	4.49	-0.88	N/A
IEL	Idp Education Ltd	3946.81	14.07	-0.78	N/A
JBH	JB Hi-Fi Limited	9293.39	85.62	0.73	N/A
JIN	Jumbo Interactive	785.69	12.74	1.76	N/A
KGN	Kogan.Com Ltd	486.66	4.79	-1.64	N/A
LNW	Light & Wonder Inc.	3894.40	157.29	2.86	N/A
LOV	Lovisa Holdings Ltd	3354.68	29.99	-1.02	N/A
NCK	Nick Scali Limited	1202.56	14.01	-0.36	N/A
PFP	Propel Funeral	820.85	5.92	-0.50	N/A
PMV	Premier Investments	5345.36	33.39	-0.27	N/A
PWH	Pwr Holdings Limited	968.43	9.50	-1.35	N/A
SGR	The Star Ent Grp	645.45	0.22	-2.22	N/A
SKC	Skycity Ent Grp Ltd	950.26	1.25	0.00	N/A
SUL	Super Ret Rep Ltd	3315.13	14.50	-1.23	N/A
TAH	TABCORP Holdings Ltd	1176.71	0.52	0.00	N/A
TLC	The Lottery Corp	11106.60	4.95	-0.80	N/A
TPW	Temple & Webster Ltd	1368.35	11.06	-3.91	N/A
WEB	Webjet Limited	1703.58	4.30	-0.92	Ceasing to be a substantial holder
WES	Wesfarmers Limited	77600.41	68.55	0.19	N/A
WJL	Webjet Group Limited	302.25	0.78	1.30	N/A

➤ **Staple stocks:**

Code	Company Name	Market Cap (\$m)	Price (\$)	Daily Price Change (%)	Newsflash
A2M	The A2 Milk Company	3822.82	4.92	-6.82	N/A
BGA	Bega Cheese Ltd	1640.70	5.31	-1.30	N/A
COL	Coles Group	23816.92	17.74	-0.17	N/A
EDV	Endeavour	8471.34	4.50	-4.86	F25 First Quarter Trading Update
ELD	Elders Limited	1417.63	8.65	-3.57	N/A
GNC	GrainCorp Limited	2052.68	8.92	-2.51	N/A
ING	Inghams Group	1118.76	2.97	-1.33	N/A
MTS	Metcash Limited	3413.87	3.04	-2.25	N/A
RIC	Ridley Corporation	846.43	2.66	-0.75	N/A
SHV	Select Harvests	534.32	3.77	0.27	N/A
TWE	Treasury Wine Estate	9315.18	11.01	-4.09	N/A
WOW	Woolworths Group Ltd	36464.47	29.51	-1.14	N/A

➤ **Healthcare stocks:**

Code	Company Name	Market Cap (\$m)	Price (\$)	Daily Price Change (%)	Newsflash
ACL	Au Clinical Labs	725.96	3.61	0.28	N/A
ANN	Ansell Limited	4749.02	32.29	-0.77	N/A
COH	Cochlear Limited	19173.42	300.93	2.73	N/A
CSL	CSL Limited	138139.29	287.32	0.71	N/A
CU6	Clarity Pharma	2305.52	7.48	3.89	Clarity and Nucleus RadioPharma sign MSA
CUV	Clinuvel Pharmaceut.	685.83	13.51	-1.39	N/A
EBO	Ebos Group Ltd	6541.09	34.20	1.79	N/A
FPH	Fisher & Paykel H.	20027.89	34.08	-0.26	N/A
HLS	Healius	1150.92	1.58	-0.32	N/A
IDX	Integral Diagnostics	715.92	3.12	1.96	N/A
IMM	Immutep Ltd	421.82	0.31	6.90	N/A
IMU	Imugene Limited	342.16	0.05	4.35	onCARlytics Trial Doses First Patient in IT Combination Arm
MSB	Mesoblast Limited	1592.79	1.46	4.66	N/A
MVF	Monash IVF Group Ltd	457.82	1.16	-1.28	N/A
MYX	Mayne Pharma Ltd	433.88	5.20	1.96	N/A
NAN	Nanosonics Limited	985.95	3.28	0.92	N/A
NEU	Neuren Pharmaceut.	2117.91	16.33	-1.45	N/A
OPT	Opthea Limited	1003.34	0.82	0.61	N/A
PME	Pro Medicus Limited	21316.73	200.71	-1.61	N/A
PNV	Polynovo Limited	1429.86	2.05	-0.97	N/A
REG	Regis Healthcare Ltd	1961.13	6.52	0.15	N/A
RHC	Ramsay Health Care	8915.30	38.43	-0.75	N/A
RMD	ResMed Inc.	22841.41	38.08	1.85	N/A
SHL	Sonic Healthcare	13052.58	27.22	0.18	N/A
SIG	Sigma Health Ltd	4144.94	2.51	-1.18	N/A
TLX	Telix Pharmaceutical	7694.37	23.34	1.52	N/A

➤ **Bank stocks:**

Code	Company Name	Market Cap (\$m)	Price (\$)	Daily Price Change (%)	Newsflash
ANZ	ANZ Group Holdings	95691.19	32.14	0.03	N/A
BEN	Bendigo and Adelaide	7122.32	12.47	-0.56	N/A
BOQ	Bank of Queensland.	4418.62	6.59	-1.35	N/A
CBA	Commonwealth Bank.	249899.02	149.79	0.31	N/A
JDO	Judo Cap Holdings	2173.18	1.93	-1.03	N/A
MYS	MyState Limited	424.91	3.75	-2.09	N/A
NAB	National Aust. Bank	121885.60	39.99	0.86	N/A
WBC	Westpac Banking Corp	110504.50	32.00	-0.44	N/A

➤ **Diversified Financials / Insurance stocks:**

Code	Company Name	Market Cap (\$m)	Price (\$)	Daily Price Change (%)	Newsflash
AEF	Australian Ethical	509.77	4.62	2.21	N/A
AFG	Aust Finance Grp	442.71	1.65	0.92	N/A
AMP	AMP Limited	3860.90	1.52	-0.33	N/A
ASX	ASX Limited	12713.23	65.59	0.03	N/A
AUB	AUB Group Ltd	3769.27	31.98	-1.08	N/A
CCP	Credit Corp Group	1227.93	18.42	2.11	N/A
CGF	Challenger Limited	4307.40	6.16	-1.12	N/A
FPR	Fleetpartners Group	720.50	2.97	-2.94	N/A
HLI	Helia Group Limited	1215.84	4.41	0.46	N/A
HMC	HMC Capital Limited	4279.38	10.80	4.05	Acquisition of iseek and DigiCo Platform Update
HUB	HUB24 Ltd	5791.68	72.14	1.11	N/A
IAG	Insurance Australia	18409.71	7.75	-0.39	N/A
IFL	Insignia Financial	2213.40	3.31	0.30	N/A
IFT	Infratil Limited	10921.93	11.04	-2.30	N/A
MAF	MA Financial Group	1260.33	6.88	-1.01	N/A
MFG	Magellan Fin Grp Ltd	1909.75	10.40	-2.62	N/A
MPL	Medibank Private Ltd	10244.89	3.69	-0.81	N/A
MQG	Macquarie Group Ltd	87101.56	228.82	0.13	QUOTED: Ex Dividend
NHF	NIB Holdings Limited	2955.72	6.00	-1.32	N/A
NWL	Netwealth Group	7184.28	29.87	1.77	N/A
OFX	OFX Group Ltd	339.56	1.47	3.53	N/A
PNI	Pinnacle Investment	4266.56	21.51	2.43	N/A
PPT	Perpetual Limited	2364.63	20.50	-0.73	N/A
PTM	Platinum Asset	721.89	1.17	-5.65	N/A
QBE	QBE Insurance Group	27473.67	18.49	1.32	N/A
QRI	Qualitas Re Income	731.92	1.64	-0.30	N/A
SDF	Steadfast Group Ltd	6272.67	5.56	-1.94	N/A
SOL	Soul Pattinson (W.H)	12325.40	33.58	0.15	N/A
SQ2	Block	5431.11	114.18	2.17	N/A
SUN	Suncorp Group Ltd	23728.70	18.63	-0.11	N/A
TYR	Tyro Payments	434.76	0.83	0.00	N/A
ZIP	ZIP Co Ltd	4243.17	3.35	3.08	N/A

## ➤ Property stocks:

Code	Company Name	Market Cap (\$m)	Price (\$)	Daily Price Change (%)	Newsflash
ABG	Abacus Group	1081.33	1.22	0.83	N/A
ARF	Arena REIT.	1585.47	3.96	-0.75	N/A
ASK	Abacus Storage King	1563.78	1.19	-0.42	N/A
BWP	BWP Trust	2425.94	3.38	-0.59	N/A
CHC	Charter Hall Group	7090.23	14.98	-0.07	Becoming a substantial holder
CIP	Centuria I REIT	1917.49	3.01	-0.33	N/A
CLW	Chtr H Lwr	2756.58	3.85	0.00	N/A
CMW	Cromwell Prop	1034.45	0.39	-1.27	N/A
CNI	Centuria Capital	1490.02	1.80	0.00	N/A
COF	Centuria Office REIT	707.84	1.18	-0.42	N/A
CQE	Charter Hall Soc In	975.00	2.60	-0.38	N/A
CQR	Charter Hall Retail	1952.93	3.37	0.30	HPI: Takeover - extension of offer period
DXI	Dexus Industria REIT	834.42	2.61	-0.76	N/A
DXS	Dexus	7636.51	7.02	-1.13	N/A
GMG	Goodman Group	68243.99	36.60	2.52	N/A
GOZ	Growthpoint Property	1907.88	2.52	-0.40	N/A
GPT	GPT Group	8677.57	4.60	1.55	N/A
HCW	Hlthcohcwellsreit	625.52	1.12	0.45	N/A
HDN	Homeco Daily Needs	2601.60	1.25	0.00	N/A
HPI	Hotel Property	699.83	3.57	0.28	HPI: Takeover - extension of offer period
INA	Ingenia Group	1976.78	4.82	-0.62	N/A
LIC	Lifestyle Communit.	1106.62	8.89	-2.20	N/A
LLC	Lendlease Group	4699.22	6.73	-1.17	LLC:Regulatory Approval for the sale of Communities Projects
MGR	Mirvac Group	8286.31	2.12	0.95	N/A
NSR	National Storage	3413.05	2.47	0.00	N/A
PXA	Pexagroup	2438.08	13.51	-1.67	PEXA 1Q25 update - FY25 guidance reaffirmed
RFF	Rural Funds Group	724.88	1.86	0.00	N/A
RGN	Region Group	2511.67	2.16	0.00	N/A
SCG	Scentre Grp	17894.01	3.48	1.16	N/A
SGP	Stockland	12031.35	5.15	2.18	Stockland upgrades FY25 guidance
URW	Unibailrodawestfield	647.48	5.98	2.22	N/A
VCX	Vicinity Centres	9605.30	2.11	0.00	N/A
WPR	Waypoint REIT	1666.21	2.48	0.00	N/A

### ➤ Tech stocks:

Code	Company Name	Market Cap (\$m)	Price (\$)	Daily Price Change (%)	Newsflash
360	Life360 Inc.	4372.61	23.95	0.67	N/A
AD8	Audinate Group Ltd	790.08	9.46	-0.21	N/A
BRN	Brainchip Ltd	572.02	0.30	1.72	N/A
CDA	Codan Limited	2895.81	15.89	-0.38	N/A
DDR	Dicker Data Limited	1599.08	8.98	1.35	N/A
DTL	Data3 Limited	1188.15	7.65	-0.26	N/A
GTK	Gentrack Group Ltd	953.88	9.43	2.50	N/A
HSN	Hansen Technologies	1067.38	5.27	0.57	N/A
IFM	Infomedia Ltd	548.65	1.30	-11.30	Revised Revenue Guidance Range
IRE	IRESS Limited	1860.42	9.95	-0.10	Iress confirms filing of legal proceedings by ESSSuper
MAQ	Macquarie Technology	2268.09	90.15	2.44	N/A
MP1	Megaport Limited	1184.83	7.69	3.92	N/A
NVX	Novonix Limited	355.50	0.81	12.50	NOVONIX and Stellantis Sign Binding Offtake Agreement
NXL	Nuix Limited	2497.61	7.68	1.05	N/A
NXT	NEXTDC Limited	10733.37	16.85	0.54	N/A
RUL	Rpmglobal Hldgs Ltd	655.62	2.98	0.68	N/A
SDR	Siteminder	1882.67	6.78	0.44	N/A
TNE	Technology One	8487.77	26.22	0.73	N/A
WBT	Weebit Nano Ltd	451.97	2.73	14.71	N/A
WTC	WiseTech Global Ltd	42506.75	129.90	2.21	N/A
XRO	Xero Ltd	23979.55	159.62	1.67	N/A

### ➤ Communication stocks:

Code	Company Name	Market Cap (\$m)	Price (\$)	Daily Price Change (%)	Newsflash
ABB	Aussie Broadband	1114.88	3.69	-2.12	N/A
CAR	CAR Group Limited	14952.36	39.92	0.83	N/A
CNU	Chorus Limited	3479.78	7.99	-0.37	N/A
DHG	Domain Holdings Aus	1692.84	2.70	0.75	N/A
EVT	EVT Limited	1831.63	11.09	-1.60	N/A
NEC	Nine Entertainment	1791.91	1.13	0.00	Change of Director's Interest Notice
NWS	News Corp..	1460.92	49.32	2.28	N/A
OML	Ooh!Media Limited	668.09	1.22	-2.02	N/A
REA	REA Group	30940.53	239.14	2.11	Form 10-Q filed by News Corp with SEC
SEK	Seek Limited	8959.75	24.68	-1.71	XF1: XREF EXTENDS SEEKS EXCLUSIVITY PERIOD
SLC	Superloop Limited	999.61	1.95	-0.51	N/A
SPK	Spark New Zealand	5052.82	2.69	-1.82	N/A
TLS	Telstra Group	44831.18	3.87	-0.26	N/A
TPG	TPG Telecom Limited	8218.29	4.40	-0.45	TPG - UBS Australasia Conference Presentation
TUA	Tuas Limited	2443.82	5.18	-1.15	N/A

### ➤ Utility stocks:

Code	Company Name	Market Cap (\$m)	Price (\$)	Daily Price Change (%)	Newsflash
AGL	AGL Energy Limited.	7144.58	10.55	-0.66	N/A
APA	APA Group	8805.67	6.67	-1.91	Change of Director's Interest Notice
ORG	Origin Energy	17072.43	9.90	-0.10	N/A



## Disclaimer

This document was prepared by Deep Data Analytics. Deep Data Analytics and its related bodies corporate (“DDA”), its directors and/or employees charge a subscription for this report. Deep Data Analytics as principal, its directors and/or employees and their associates may hold securities in the companies mentioned in this report. Deep Data Analytics may seek to do business with any of the companies outlined in this report and should not be considered independent. This document contains Deep Data Analytics proprietary processed data and publicly available information. The information has not been verified or audited, and you are strongly advised to make your own independent assessment and investigation in respect of any matters contained in the document, including to seek independent professional advice. The document has been provided to you for your general information purposes only. It does not consider your particular investment objectives, financial situation or other specific needs. This report has been provided to you on the condition that it is purely general advice and not to be considered as personal advice at any level.

Deep Data Analytics or their respective directors, officers, employees or shareholders makes any representation or warranty, expressed or implied, and takes no responsibility, in respect of the accuracy, reliability, completeness or thoroughness of any of the information contained in this document. Each of those parties, to the maximum extent permitted by law, expressly disclaims, and as a recipient, you expressly release each of those parties from, all liabilities, including (without limitation) liability for negligence in respect of, any part of the information contained in the document. No such parties are under any obligation to update any information in this document or correct any inaccuracies or omissions that may exist or become apparent. Neither this document nor any additional information which may subsequently be provided to a recipient shall constitute or form part of any offer, solicitation, invitation, advice or recommendation to sell or acquire any securities or assets.

Deep Data Analytics provides this financial advice as an honest and reasonable opinion held at a point in time about an investment’s risk profile and merit and the information is provided by the Deep Data Analytics in good faith. The views of the adviser(s) do not necessarily reflect the views of the AFS Licensee. Deep Data Analytics has no obligation to update the opinion unless Deep Data Analytics is currently contracted to provide such an updated opinion. Deep Data Analytics does not warrant the accuracy of any information it sources from others. All statements as to future matters are not guaranteed to be accurate and any statements as to past performance do not represent future performance. Assessment of risk can be subjective. Portfolios of equity investments need to be well diversified and the risk appropriate for the investor. Equity investments in listed or unlisted companies yet to achieve a profit or with an equity value less than \$50 million should collectively be a small component of a balanced portfolio, with smaller individual investment sizes than otherwise. Investors are responsible for their own investment decisions, unless a contract stipulates otherwise. Deep Data Analytics does not stand behind the capital value or performance of any investment. Subject to any terms implied by law and which cannot be excluded, Deep Data Analytics shall not be liable for any errors, omissions, defects or misrepresentations in the information (including by reasons of negligence, negligent misstatement or otherwise) or for any loss or damage (whether direct or indirect) suffered by persons who use or rely on the information. If any law prohibits the exclusion of such liability, Deep Data Analytics limits its liability to the re-supply of the Information, provided that such limitation is permitted by law and is fair and reasonable.

Copyright © Deep Data Analytics. All rights reserved. This material is proprietary to Deep Data Analytics and may not be disclosed to third parties. Any unauthorized use, duplication or disclosure of this document is prohibited. The content has been approved for distribution by Deep Data Analytics (ABN 67 159 532 213 AFS Representative No. 1282992) which is a corporate approved representative of BR Securities (ABN 92 168 734 530 and holder of AFSL No. 456663). Deep Data Analytics is the business name of ABN 67 159 532 213.