



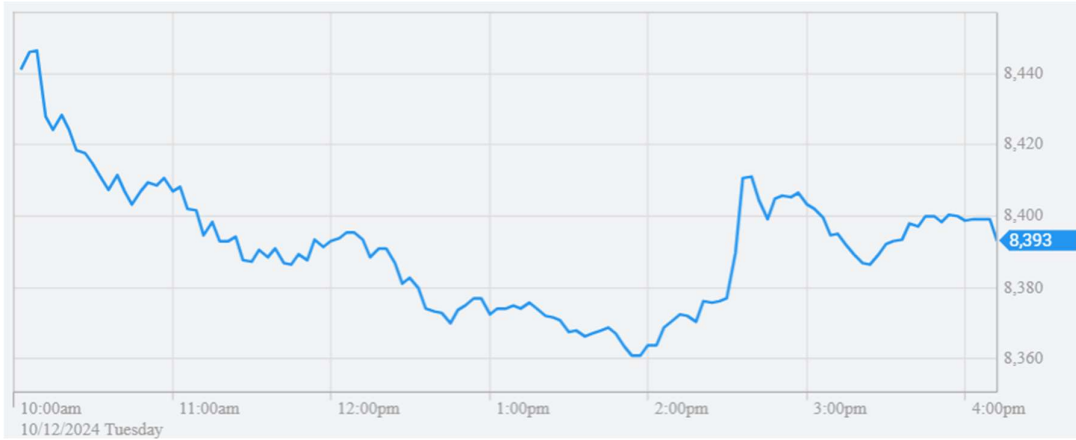
INVESTMENT MOTTO: Every cycle offers risk and return. Investing is all about how you manage each cycle to get the best out of it.

MARKET COMMENTARY

The Aussie market had another negative day despite global funds trying to defend a losing trade. They are buying banks and miners to hold the market up despite falling currency. RBA basically confirmed they are not even looking at cuts with risk of rising inflation in 2025. Inflation is rising around the world, and we are starting to ramp up geopolitics with trade wars coming in Jan. Growth stocks are getting hit hard and we may get more as China stimulus fake stories fade as usual. China keeps saying that they will support growth more for nearly 2 years and markets gets excited before being disappointed again. It's the China pump and dump cycle. Japan and South Korea are classic example of economies in political mess as slowing growth bites. Then we can move to Middle East mess when Russian backed dictator has been replaced by US/Israel backed terror group commander to lead Syria. Given the track record of US sponsored leadership changes in the Middle East is like getting in an Uber with Stevie Wonder driving. It may be different this time!

CNBC on China trade data > China's exports and imports both missed expectations in November, data from the country's customs authority showed Tuesday, fueling worries over the health of the Chinese economy as consumer demand remains sluggish and tariff threats loom. Import data surprised with a decline of 3.9%, marking the sharpest fall since September 2023. Analysts had expected imports to grow 0.3%. Exports rose 6.7% in U.S. dollar terms from a year ago, sharply lower than the 12.7% growth in the previous month. Analysts in a Reuters poll had expected exports to climb 8.5% from a year ago in November. The exports slowdown in November does not "mark an end of China's recent export boom," Zichun Huang, China economist at Capital Economics said in a note on Tuesday, adding that while U.S. tariffs could reduce export volumes by around 3%, "they may not be felt until the middle of next year." In the short run, the tariff threats "may even spur exports as U.S. firms ramp up orders" for Chinese goods, Huang added. Meanwhile, import volumes may also recover in the short term, as accelerated fiscal spending boosts demand for industrial commodities, Huang said. China's exports to all its major trading partners — the U.S., European Union and Association of Southeast Asian Nations — all rose in November from a year earlier. Exports to ASEAN countries increased the most, up by nearly 15%, according to CNBC's analysis of the official data. Imports from its largest trading partner ASEAN fell 3%. China's exports to the U.S. increased 8% on year while imports fell over 11%. The country's exports to European Union jumped 7.2% while imports shrank 6.5% from a year ago. China's exports to Russia were down by 2.5% while imports dropped by 6.5%. The volume of China's rare earths exports rose nearly 5% from a year ago in November, shipping out 4,416 metric tons of the minerals, used in products ranging from electric vehicles to consumer electronics. Cumulative exports in the months through November this year rose 6.6% from a year ago.

Historically, 75% of retail investors have experienced losses during positive market periods. Investors are now facing market cycles that are unprecedented in their lifetime, making risk management a crucial aspect of investing. Going forward, the trend towards active investing is reemerging as investors seek quality, relative value, profitability, and dividends. To navigate this new paradigm, it's important to have an active investment strategy that is flexible and adaptable to changing market conditions!



Security	Last	+/-	%	Security	Last	+/-	%	Security	Last	+/-	%
S&P 300	8321.30	-30.80	-0.37	DXY	106.0400	-0.1000	-0.09	SPTGLD	2667.75	7.94	0.30
S&P 200	8393.00	-30.00	-0.36	AUDUSD	0.6399	-0.0040	-0.62	TWI	60.50	0.00	0.00
Mid Cap	10415.40	-122.30	-1.16	NZDAUD	0.9117	0.0010	0.11	WTIS	67.94	-0.43	-0.63
Small Cap	3164.20	-20.30	-0.64	GBPAUD	1.9937	0.0137	0.69	BRENT	71.77	-0.37	-0.51
Micro Cap	2296.10	-8.80	-0.38	EURAUD	1.6509	0.0120	0.73	COPP3M	9216.00	67.00	0.73
NZ50G	12723.37	-78.43	-0.61	EURUSD	1.0565	0.0011	0.11	NICK3M	15950.00	-110.00	-0.68
JAPAN	39295.51	135.01	0.34	USDJPY	150.9850	-0.2590	-0.17	ZINC	3110.50	48.50	1.58
KOSPI	2415.59	55.01	2.33	CNYUSD	0.1381	0.0004	0.33	Security	Last	+/-	%
SING	3814.77	19.85	0.52	Security	Last	+/-	%	DOWFUT	44474.00	-5.00	-0.01
SHANGHAI	3440.02	37.49	1.10	USBON	4.1852	0.0386	0.93	NASFUT	21456.00	-27.75	-0.13
HNGKNG	20534.91	120.82	0.59	USLBR	4.3750	0.0440	1.02	SPFUT	6061.00	-4.75	-0.08
GERMAN	20345.96	0.00	0.00	BOND10	4.1380	-0.0610	-1.45				
CAC40	7480.14	0.00	0.00	BBSR3M	4.4397	0.0137	0.31				
FTSE	8352.08	43.47	0.52	VIX	14.19	1.42	11.12				
DOWJON	44401.93	-240.59	-0.54	XVI	10.34	-0.02	-0.16				
NASDAQ	19736.69	-123.08	-0.62								
SP500	6052.85	-37.42	-0.61								

Sources: AFR, AAP, ASX, Bloomberg, CNBC, CNN, FactSet, Hedgeye, IRESS, Market Watch, Reuters, S&P, Trading Economics

The annual inflation rate in Mexico eased to 4.55% in November of 2024 from 4.76% in the previous month, loosely in line with market expectations of 5.59% to mark the slowest pace of inflation since March. Consumer costs slowed sharply for housing and utilities (3.24% vs 3.72% in October) and food and nonalcoholic beverages (6.03% vs 6.23%), despite remaining elevated. Still, prices refrained from falling for restaurants and lodging (steady at 6.84%) and rose faster for transportation (4.42% vs 4.35%). In turn, core inflation eased to 3.58% in the period from 3.8% last month, the lowest since April 2020.

US wholesale inventories rose by 0.2% month-over-month to \$905 billion in October 2024, in line with the preliminary estimate and following a 0.2% decrease in the prior month. Stocks of non-durable goods rose by 0.3%, following a 0.4% increase in September, primarily groceries (+1.6%), drugs (+1.1%) and miscellaneous products (+0.7%). Meanwhile, durable inventories rose by 0.1%, after a 0.6% decrease in the prior month, with notable increases seen for computer equipment (+2.9%), furniture (+2.7%) and professional equipment (+2.6%). On a yearly basis, wholesale inventories increased by 0.9% in October, matching the preliminary reading.

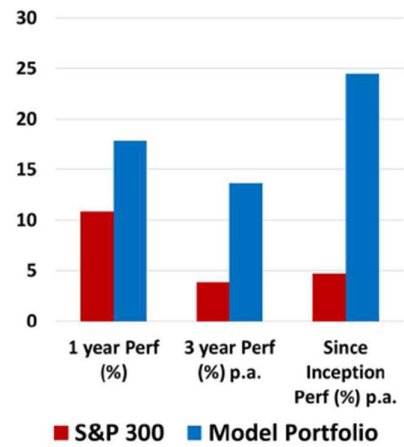
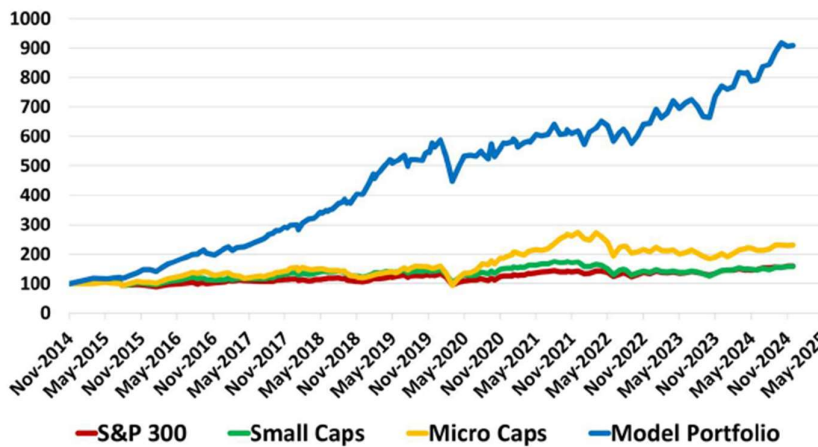
US consumer inflation expectations for the year ahead increased to 3% in November 2024 from 2.9% in October which was the lowest since October 2020. Consumers expect prices to increase faster for medical care (+0.2 percentage point to 6%) and college education (+1.0 percentage point to 6.7%). In contrast, median price growth expectations were unchanged at 3% for home and declined for gas (-0.5 percentage point to 2.7%), food (-0.5 percentage point to 3.8%) and rent (-0.2 percentage point to 5.7%). Inflation expectations also increased for the three-year-ahead (2.6% vs 2.5%) and the five-year outlook (2.9% vs 2.8%).

China's trade surplus surged to USD 97.44 billion in November 2024 from USD 69.45 billion in the same period a year earlier, surpassing expectations of USD 95 billion. It was the largest trade surplus since June, as exports grew while imports fell. Sales grew 6.7% yoy, below forecasts of 8.5%, easing from a 12.7% jump in October, but marking the largest value in 26 months, as manufacturers front-loaded orders in anticipation of further tariffs from the US and the EU. Meanwhile, imports unexpectedly dropped 3.9%, following a 2.3% fall in October and missing consensus of a 0.3% rise due to weak domestic demand. The trade surplus with the US widened to USD 34.9 billion in November from USD 33.5 billion in October. For the first eleven months of 2024, the trade surplus was at USD 884.7 billion, with exports advancing 5.4% to USD 3.24 trillion while imports rose at a softer 1.2% to USD 2.36 trillion. During the period, the trade surplus with the US stood at USD 326.8 billion.

Australia's NAB business confidence index plunged to -3 in November 2024 from a near two-year top of 5 in the prior month, falling below its long-term average due to declines across most industries, except for construction. Meanwhile, business conditions sank to their lowest since late 2020 (2 vs 7 in October), with all sub-components now at or below average: sales (8 vs 13), profitability (5 vs -1), and employment (2 vs 3). Activity shrank across all industries, with retail and manufacturing seeing the worst conditions. Labor cost growth in quarterly terms was unchanged (at 1.4%) while purchase cost growth ticked up to 1.1%. Product price growth stayed at 0.6%, with retail price growth slowing (0.6% vs 1.1%). Forward orders fell further (-5 vs -3). Capex rose slightly (10 vs 8), amid stable capacity utilization at 82.4%. "The survey points to ongoing soft growth in Q4... it will likely take more time for price pressures to normalize fully," said NAB chief economist Alan Oster.

Deep Data Analytics provides the framework and support to make you a professional investor!

Yield investing can outperform in an expensive market with risk management!



For more market and investment strategies,

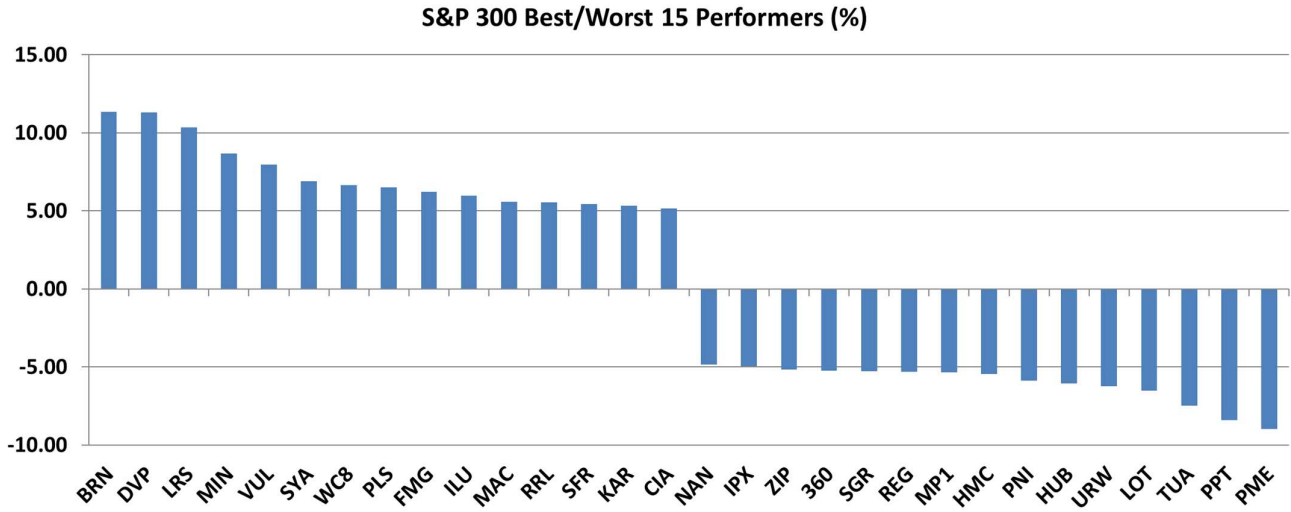
visit...

www.deepdataanalytics.com.au

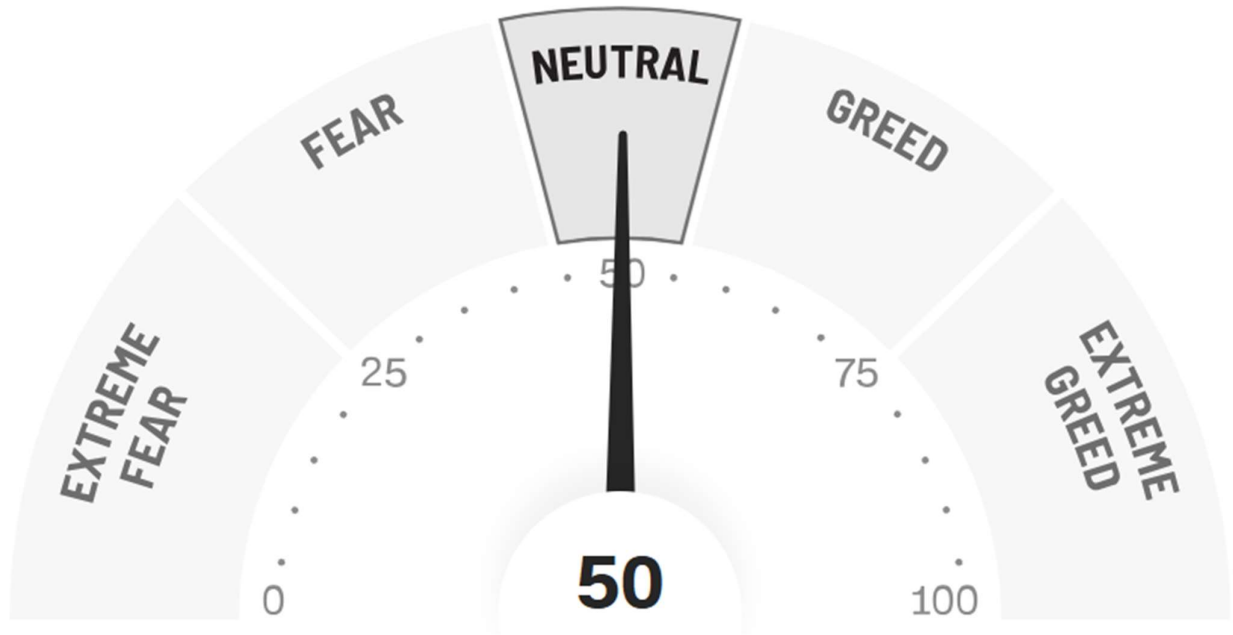
or email...

info@deepdataanalytics.com.au

1. Movers and Shakers in S&P 300 >



2. CNN Fear & Greed Index >



TODAY'S BEST 30 IN S&P 300

Code	Company Name	Market Cap (\$m)	Price (\$)	Daily Price Change (%)	Newsflash
BRN	Brainchip Ltd	433.94	0.25	11.36	US\$1.8 million contract with Air Force Research Laboratory
DVP	Develop Global Ltd	600.25	2.46	11.31	Completion of A\$100m Loan Facility with Trafigura
LRS	Latin Resources Ltd	406.21	0.16	10.34	N/A
MIN	Mineral Resources.	6718.97	37.16	8.69	N/A
VUL	Vulcan Energy	1157.36	6.64	7.97	N/A
SYA	Sayona Mining Ltd	334.76	0.03	6.90	N/A
WC8	Wildcat Resources	293.35	0.24	6.67	N/A
PLS	Pilbara Min Ltd	6474.82	2.29	6.51	N/A
FMG	Fortescue Ltd	59270.07	20.45	6.23	N/A
ILU	Iluka Resources	2072.73	5.13	5.99	Change in substantial holding
MAC	Metals Acquisition	754.94	20.25	5.58	N/A
RRL	Regis Resources	2039.79	2.85	5.56	N/A
SFR	Sandfire Resources	4642.10	10.67	5.43	N/A
KAR	Karooon Energy Ltd	1020.25	1.39	5.32	N/A
CIA	Champion Iron Ltd	3109.51	6.31	5.17	N/A
EVN	Evolution Mining Ltd	10026.29	5.29	4.96	N/A
CSC	Capstonecorp	1693.00	10.59	4.85	N/A
RIO	Rio Tinto Limited	44356.63	125.28	4.85	N/A
WA1	Wa1ResourcesLtd	938.54	14.52	4.76	N/A
EMR	Emerald Res NL	2404.79	3.82	4.37	N/A
ARU	Arafura Rare Earths	283.40	0.12	4.35	Update on Project Leadership
VAU	Vault Minerals Ltd	2380.87	0.37	4.29	N/A
TWE	Treasury Wine Estate	9323.29	11.95	4.00	Acquisition of vineyard and production assets in China
DRR	Deterra	2035.92	4.00	3.90	N/A
GOR	Gold Road Res Ltd	2276.44	2.18	3.81	N/A
WGX	Westgold Resources.	2744.45	3.02	3.78	Becoming a substantial holder
OFX	OFX Group Ltd	326.21	1.43	3.64	N/A
WHC	Whitehaven Coal	5295.68	6.55	3.48	N/A
MEI	Meteoric Resources	200.35	0.09	3.45	N/A
NIC	Nickel Industries	3753.58	0.91	3.43	N/A

TODAY'S WORST 30 IN S&P 300

Code	Company Name	Market Cap (\$m)	Price (\$)	Daily Price Change (%)	Newsflash
PME	Pro Medicus Limited	28044.37	244.33	-8.96	N/A
PPT	Perpetual Limited	2508.92	20.07	-8.40	Update on Scheme with KKR
TUA	Tuas Limited	2994.15	5.94	-7.48	N/A
LOT	Lotus Resources Ltd	485.37	0.22	-6.52	N/A
URW	Unibailrodawestfield	691.62	6.00	-6.25	N/A
HUB	HUB24 Ltd	6143.97	71.10	-6.06	N/A
PNI	Pinnacle Investment	5415.31	22.74	-5.88	N/A
HMC	HMC Capital Limited	5063.77	11.61	-5.46	N/A
MP1	Megaport Limited	1258.95	7.43	-5.35	N/A
REG	Regis Healthcare Ltd	2045.48	6.43	-5.30	N/A
SGR	The Star Ent Grp	545.05	0.18	-5.26	N/A
360	Life360 Inc.	4370.87	22.77	-5.24	N/A
ZIP	ZIP Co Ltd	4047.33	2.94	-5.16	Becoming a substantial holder
IPX	Iperionx Limited	1390.42	4.41	-4.96	N/A
NAN	Nanosonics Limited	1001.40	3.14	-4.85	Change of Director's Interest Notice
DDR	Dicker Data Limited	1585.23	8.39	-4.44	N/A
XRO	Xero Ltd	27324.20	170.99	-4.37	N/A
WTC	WiseTech Global Ltd	43922.55	125.60	-4.36	Release of 71,548 ordinary shares from escrow
AD8	Audinate Group Ltd	675.07	7.75	-4.32	N/A
NXL	Nuix Limited	2222.53	6.43	-4.32	N/A
LNW	Light & Wonder Inc.	4046.86	146.50	-4.25	N/A
CMW	Cromwell Prop	968.98	0.36	-4.05	N/A
PDI	Predictive Disc Ltd	587.73	0.24	-4.00	N/A
HSN	Hansen Technologies	1138.68	5.37	-3.94	N/A
CCP	Credit Corp Group	1177.56	16.64	-3.82	N/A
DRO	Droneshield Limited	575.60	0.64	-3.79	N/A
WEB	Webjet Limited	1872.37	4.59	-3.77	N/A
NWL	Netwealth Group	7372.76	29.00	-3.72	N/A
DTL	Data3 Limited	1200.54	7.47	-3.61	N/A
PNV	Polynovo Limited	1540.58	2.15	-3.59	N/A

CHECKING S&P 300 BY THE SECTOR

➤ Energy stocks:

Code	Company Name	Market Cap (\$m)	Price (\$)	Daily Price Change (%)	Newsflash
AEL	Amplitude Energy	488.41	0.19	0.00	Debt facility increase and extension
ALD	Ampol Limited	6679.61	28.00	-0.11	N/A
BMN	Bannerman Energy Ltd	491.23	2.77	0.73	N/A
BOE	Boss Energy Ltd	1044.70	2.55	0.00	Change in substantial holding
BPT	Beach Energy Limited	2851.67	1.25	-0.40	N/A
DYL	Deep Yellow Limited	1197.63	1.25	0.81	N/A
KAR	Karoon Energy Ltd	1020.25	1.39	5.32	N/A
LOT	Lotus Resources Ltd	485.37	0.22	-6.52	N/A
NHC	New Hope Corporation	4184.41	5.03	1.62	N/A
NXG	Nexgenenergycanada	1315.63	12.61	-3.22	N/A
PDN	Paladin Energy Ltd	2234.37	7.62	2.01	N/A
STO	Santos Ltd	21240.44	6.59	0.76	N/A
STX	Strike Energy Ltd	573.07	0.20	0.00	N/A
VEA	Viva Energy Group	4194.34	2.67	1.52	N/A
WDS	Woodside Energy	45171.26	24.14	1.47	N/A
WHC	Whitehaven Coal	5295.68	6.55	3.48	N/A
YAL	Yancoal Aust Ltd	8094.29	6.25	1.96	N/A

➤ Material (Ex Mining) stocks:

Code	Company Name	Market Cap (\$m)	Price (\$)	Daily Price Change (%)	Newsflash
A4N	Alpha Hpa Ltd	1140.25	1.00	-0.50	N/A
AMC	Amtcor PLC	9670.04	15.89	-0.75	N/A
BKW	Brickworks Limited	4037.75	26.24	-0.61	N/A
IPL	Incitec Pivot	5851.39	3.07	-1.29	Change of Director's Interest Notice
JHX	James Hardie Indust	23671.82	54.86	-0.47	N/A
LTM	Arcadium Lithium PLC	2141.84	7.97	-1.60	N/A
NUF	Nufarm Limited	1435.84	3.80	1.33	N/A
ORA	Orora Limited	3210.96	2.42	1.26	ORA - OPS regulatory approval and capital management
ORI	Orica Limited	9009.69	18.39	-0.59	N/A

➤ **Gold stocks:**

Code	Company Name	Market Cap (\$m)	Price (\$)	Daily Price Change (%)	Newsflash
BGL	Bellevue Gold Ltd	1715.20	1.38	2.99	N/A
CMM	Capricorn Metals	2884.74	6.93	-1.28	N/A
DEG	De Grey Mining	4601.77	1.97	2.34	N/A
EMR	Emerald Res NL	2404.79	3.82	4.37	N/A
EVN	Evolution Mining Ltd	10026.29	5.29	4.96	N/A
GMD	Genesis Minerals	3013.54	2.74	2.62	N/A
GOR	Gold Road Res Ltd	2276.44	2.18	3.81	N/A
IPX	Iperionx Limited	1390.42	4.41	-4.96	N/A
NEM	Newmont Corporation	7673.50	65.61	2.44	N/A
NST	Northern Star	18981.30	16.90	2.36	N/A
PDI	Predictive Disc Ltd	587.73	0.24	-4.00	N/A
PRU	Perseus Mining Ltd	3729.00	2.77	2.21	N/A
RMS	Ramellius Resources	2668.05	2.37	2.60	N/A
RRL	Regis Resources	2039.79	2.85	5.56	N/A
RSG	Resolute Mining	862.27	0.41	1.23	N/A
SPR	Spartan Resources	1724.73	1.53	-1.61	N/A
VAU	Vault Minerals Ltd	2380.87	0.37	4.29	N/A
WAF	West African Res Ltd	1829.34	1.64	2.18	N/A
WGX	Westgold Resources.	2744.45	3.02	3.78	Becoming a substantial holder

➤ **Mining (Ex Gold) stocks:**

Code	Company Name	Market Cap (\$m)	Price (\$)	Daily Price Change (%)	Newsflash
AAI	Alcoa Corporation	3964.77	65.05	-2.30	N/A
ADT	Adriatic Metals	1131.71	4.16	2.21	N/A
ARU	Arafura Rare Earths	283.40	0.12	4.35	Update on Project Leadership
BHP	BHP Group Limited	205949.65	41.83	3.05	N/A
BSL	BlueScope Steel Ltd	9443.27	22.16	2.93	N/A
CHN	Chalice Mining Ltd	486.28	1.27	1.60	N/A
CIA	Champion Iron Ltd	3109.51	6.31	5.17	N/A
CRN	Coronado Global Res	1374.69	0.83	1.22	N/A
CSC	Capstonecorp	1693.00	10.59	4.85	N/A
DRR	Deterra	2035.92	4.00	3.90	N/A
DVP	Develop Global Ltd	600.25	2.46	11.31	Completion of A\$100m Loan Facility with Trafigura
FMG	Fortescue Ltd	59270.07	20.45	6.23	N/A
IGO	IGO Limited	3756.05	5.08	2.42	N/A
ILU	Iluka Resources	2072.73	5.13	5.99	Change in substantial holding
IMD	Imdex Limited	1325.67	2.55	-1.54	N/A
INR	Ioneer Ltd	400.46	0.17	-2.94	N/A
LRS	Latin Resources Ltd	406.21	0.16	10.34	N/A
LTR	Liontown Resources	1480.02	0.61	0.00	N/A
LYC	Lynas Rare Earths	6477.60	7.01	1.15	N/A
MAC	Metals Acquisition	754.94	20.25	5.58	N/A
MEI	Meteoric Resources	200.35	0.09	3.45	N/A
MIN	Mineral Resources.	6718.97	37.16	8.69	N/A
NIC	Nickel Industries	3753.58	0.91	3.43	N/A
PLS	Pilbara Min Ltd	6474.82	2.29	6.51	N/A
PMT	Patriotbatterymetals	182.24	0.32	1.59	N/A
PRN	Perenti Limited	1188.24	1.27	0.00	N/A
RIO	Rio Tinto Limited	44356.63	125.28	4.85	N/A
S32	South32 Limited	16265.98	3.68	2.22	Mozal Aluminium Update
SFR	Sandfire Resources	4642.10	10.67	5.43	N/A
SGM	Sims Limited	2473.08	13.07	2.11	N/A
SMR	Stanmore Resources	2848.40	3.20	1.27	N/A
SYA	Sayona Mining Ltd	334.76	0.03	6.90	N/A
SYR	Syrah Resources	248.37	0.25	2.08	N/A
VSL	Vulcan Steel	931.72	7.27	2.83	N/A
VUL	Vulcan Energy	1157.36	6.64	7.97	N/A
WA1	Wa1ResourcesLtd	938.54	14.52	4.76	N/A
WC8	Wildcat Resources	293.35	0.24	6.67	N/A

➤ Industrial stocks:

Code	Company Name	Market Cap (\$m)	Price (\$)	Daily Price Change (%)	Newsflash
AIA	Auckland Internation	12630.50	7.33	-2.40	N/A
ALQ	ALS Ltd	7602.95	15.74	0.32	ALS PFAS Presentation
ALX	Atlas Arteria	6760.89	4.66	0.00	N/A
ASB	Austal Limited	1068.06	2.87	-2.38	N/A
AZJ	Aurizon Holdings Ltd	6166.36	3.36	0.30	N/A
BXB	Brambles Limited	26953.83	19.29	-0.82	N/A
CPU	Computershare Ltd	19564.42	33.18	-0.66	N/A
CWY	Cleanaway Waste Ltd	6336.15	2.82	-0.70	N/A
DBI	Dalrymple Bay	1720.29	3.40	-2.02	N/A
DOW	Downer EDI Limited	3861.55	5.82	1.22	N/A
DRO	Droneshield Limited	575.60	0.64	-3.79	N/A
FBU	Fletcher Building	2751.74	2.59	1.17	N/A
GWA	GWA Group Ltd	617.93	2.33	0.00	N/A
IPH	IPH Limited	1380.81	4.95	-1.20	N/A
JLG	Johns Lyng Group	1100.29	3.81	-2.56	N/A
KLS	Kelsian Group Ltd	1014.06	3.70	-1.07	N/A
MGH	Maas Group Holdings	1732.80	4.81	-1.64	N/A
MMS	McMillan Shakespeare	1040.47	14.71	-1.54	N/A
MND	Monadelphous Group	1334.54	13.42	-1.03	N/A
NWH	NRW Holdings Limited	1719.04	3.76	0.00	N/A
QAN	Qantas Airways	13664.19	9.01	-0.22	N/A
QUB	Qube Holdings Ltd	6898.37	3.88	-0.51	N/A
RDX	Redox Limited	2074.07	3.85	-2.53	N/A
REH	Reece Limited	16259.42	24.76	-1.63	N/A
RWC	Reliance Worldwide	4205.13	5.38	-0.19	N/A
SGH	SGH Ltd	19792.32	47.36	-2.61	N/A
SIQ	Smartgrp Corporation	1097.60	7.95	-2.93	N/A
SLX	Silex Systems	1345.60	5.61	-1.06	N/A
SSM	Service Stream	948.57	1.54	0.00	N/A
TCL	Transurban Group	40135.12	12.98	0.39	N/A
VNT	Ventiaservicesgroup	3644.36	4.23	-0.70	N/A
WOR	Worley Limited	7005.36	13.23	-0.08	N/A

➤ Consumer stocks:

Code	Company Name	Market Cap (\$m)	Price (\$)	Daily Price Change (%)	Newsflash
ADH	Adairs Limited	471.35	2.73	1.87	N/A
ALL	Aristocrat Leisure	43427.34	67.90	-1.59	N/A
AOV	Amotiv	1469.87	10.46	0.00	N/A
APE	Eagers Automotive	2903.33	11.50	2.22	N/A
ARB	ARB Corporation.	3325.03	39.66	-1.00	N/A
AX1	Accent Group Ltd	1398.02	2.44	-1.21	N/A
BAP	Bapcor Limited	1574.87	4.64	0.00	N/A
BRG	Breville Group Ltd	5341.53	37.01	-0.27	Becoming a substantial holder
CKF	Collins Foods Ltd	931.91	7.88	-0.38	N/A
CTD	Corp Travel Limited	2058.80	14.01	-0.43	N/A
CTT	Cettire	476.55	1.23	-1.60	N/A
DMP	Domino Pizza Enterpr	2930.30	31.25	-1.36	N/A
FLT	Flight Centre Travel	3704.27	16.40	-1.74	N/A
GEM	G8 Education Limited	1109.02	1.36	-0.73	N/A
GYG	Guzman Y Gomez Ltd	4445.12	42.80	-2.31	N/A
HVN	Harvey Norman	6018.21	4.83	0.00	N/A
IEL	Idp Education Ltd	3518.17	12.34	-2.37	N/A
JBH	JB Hi-Fi Limited	10408.59	93.24	-2.06	N/A
JIN	Jumbo Interactive	876.68	14.18	1.50	N/A
KGN	Kogan.Com Ltd	566.76	5.63	-0.88	N/A
LNW	Light & Wonder Inc.	4046.86	146.50	-4.25	N/A
LOV	Lovisa Holdings Ltd	3382.36	30.05	-1.64	Ceasing to be a substantial holder
NCK	Nick Scali Limited	1292.37	15.10	-0.07	N/A
PFP	Propel Funeral	809.82	5.86	-0.17	N/A
PMV	Premier Investments	5795.60	35.01	-3.55	QUOTED: Ex Dividend
PWH	Pwr Holdings Limited	817.58	8.11	-0.25	N/A
SGR	The Star Ent Grp	545.05	0.18	-5.26	N/A
SKC	Skycity Ent Grp Ltd	973.06	1.27	-0.78	N/A
SUL	Super Ret Rep Ltd	3378.36	14.89	-0.47	N/A
TAH	TABCORP Holdings Ltd	1290.95	0.56	-0.88	N/A
TLC	The Lottery Corp	11440.47	5.18	0.78	N/A
TPW	Temple & Webster Ltd	1565.70	12.89	-1.98	N/A
WEB	Webjet Limited	1872.37	4.59	-3.77	N/A
WES	Wesfarmers Limited	84607.81	74.21	-0.51	N/A
WJL	Webjet Group Limited	357.20	0.90	-1.65	Change in substantial holding

➤ **Staple stocks:**

Code	Company Name	Market Cap (\$m)	Price (\$)	Daily Price Change (%)	Newsflash
A2M	The A2 Milk Company	4119.67	5.81	2.11	N/A
BGA	Bega Cheese Ltd	1601.06	5.30	0.95	N/A
COL	Coles Group	25478.88	19.01	0.00	N/A
EDV	Endeavour	7683.30	4.28	-0.23	Impact of Victorian industrial action on supply chain
ELD	Elders Limited	1314.47	7.61	2.01	N/A
GNC	GrainCorp Limited	1705.71	7.69	0.00	Change of Director's Interest Notice
ING	Inghams Group	1163.36	3.15	0.64	N/A
MTS	Metcash Limited	3589.50	3.31	1.22	N/A
RIC	Ridley Corporation	862.22	2.71	-0.73	N/A
SHV	Select Harvests	608.22	4.27	-0.23	N/A
TWE	Treasury Wine Estate	9323.29	11.95	4.00	Acquisition of vineyard and production assets in China
WOW	Woolworths Group Ltd	36940.89	30.34	0.33	N/A

➤ **Healthcare stocks:**

Code	Company Name	Market Cap (\$m)	Price (\$)	Daily Price Change (%)	Newsflash
ACL	Au Clinical Labs	736.76	3.55	-3.27	N/A
ANN	Ansell Limited	4924.15	33.09	-1.93	N/A
COH	Cochlear Limited	19731.68	295.62	-1.97	N/A
CSL	CSL Limited	136197.67	282.01	0.26	N/A
CU6	Clarity Pharma	1808.42	5.49	-2.66	N/A
CUV	Clinuvel Pharmaceut.	621.25	12.74	2.66	N/A
EBO	Ebos Group Ltd	6525.67	33.27	-0.75	N/A
FPH	Fisher & Paykel H.	19740.69	33.55	-0.39	N/A
HLS	Healius	1049.26	1.45	0.35	N/A
IDX	Integral Diagnostics	678.49	2.93	1.03	IDX acquisition of CAJ not opposed, subject to divestiture
IMM	Immutep Ltd	487.51	0.34	1.49	Initiation of TACTI-004 phase 3 trial in 1st line NSCLC
IMU	Imugene Limited	282.66	0.04	0.00	N/A
MSB	Mesoblast Limited	1889.65	1.70	2.72	N/A
MVF	Monash IVF Group Ltd	490.94	1.26	-0.40	N/A
MYX	Mayne Pharma Ltd	405.42	4.99	0.00	N/A
NAN	Nanosonics Limited	1001.40	3.14	-4.85	Change of Director's Interest Notice
NEU	Neuren Pharmaceut.	1628.37	12.97	1.81	N/A
OPT	Opthea Limited	867.92	0.70	-1.42	N/A
PME	Pro Medicus Limited	28044.37	244.33	-8.96	N/A
PNV	Polynovo Limited	1540.58	2.15	-3.59	N/A
REG	Regis Healthcare Ltd	2045.48	6.43	-5.30	N/A
RHC	Ramsay Health Care	9083.38	38.84	-1.55	N/A
RMD	ResMed Inc.	23171.54	38.19	0.34	NOTICE OF PROPOSED SALE OF SECURITIES
SHL	Sonic Healthcare	13739.55	28.44	-0.56	N/A
SIG	Sigma Health Ltd	4699.77	2.82	-2.08	N/A
TLX	Telix Pharmaceutical	8301.17	24.47	-1.33	N/A

➤ **Bank stocks:**

Code	Company Name	Market Cap (\$m)	Price (\$)	Daily Price Change (%)	Newsflash
ANZ	ANZ Group Holdings	89436.86	29.48	-1.83	N/A
BEN	Bendigo and Adelaide	7644.90	13.30	-1.19	N/A
BOQ	Bank of Queensland.	4544.30	6.74	-1.89	N/A
CBA	Commonwealth Bank.	266716.43	157.63	-1.10	N/A
JDO	Judo Cap Holdings	2139.83	1.91	-0.26	N/A
MYS	MyState Limited	457.08	4.05	-1.70	N/A
NAB	National Aust. Bank	119046.22	37.64	-2.81	N/A
WBC	Westpac Banking Corp	112990.56	32.24	-1.92	N/A

➤ **Diversified Financials / Insurance stocks:**

Code	Company Name	Market Cap (\$m)	Price (\$)	Daily Price Change (%)	Newsflash
AEF	Australian Ethical	644.22	5.55	-2.29	Becoming a substantial holder
AFG	Aust Finance Grp	427.82	1.55	-1.90	N/A
AMP	AMP Limited	4101.42	1.60	-1.23	N/A
ASX	ASX Limited	13490.72	68.86	-1.03	N/A
AUB	AUB Group Ltd	3673.67	31.01	-1.59	N/A
CCP	Credit Corp Group	1177.56	16.64	-3.82	N/A
CGF	Challenger Limited	4134.55	5.89	-1.51	N/A
FPR	Fleetpartners Group	734.63	3.10	-0.64	N/A
HLI	Helia Group Limited	1200.02	4.40	0.92	N/A
HMC	HMC Capital Limited	5063.77	11.61	-5.46	N/A
HUB	HUB24 Ltd	6143.97	71.10	-6.06	N/A
IAG	Insurance Australia	20459.71	8.50	-1.73	IAG to defend class action
IFL	Insignia Financial	2032.30	3.06	0.99	IFL unveils plans to transform Master Trust business
IFT	Infratil Limited	11057.24	11.09	-3.06	N/A
MAF	MA Financial Group	1118.89	6.14	-0.49	N/A
MFG	Magellan Fin Grp Ltd	1972.01	11.15	1.27	N/A
MPL	Medibank Private Ltd	10657.99	3.83	-1.03	N/A
MQG	Macquarie Group Ltd	88107.77	226.85	-1.87	N/A
NHF	NIB Holdings Limited	2727.23	5.56	-0.89	N/A
NWL	Netwealth Group	7372.76	29.00	-3.72	N/A
OFX	OFX Group Ltd	326.21	1.43	3.64	N/A
PNI	Pinnacle Investment	5415.31	22.74	-5.88	N/A
PPT	Perpetual Limited	2508.92	20.07	-8.40	Update on Scheme with KKR
PTM	Platinum Asset	521.04	0.88	-2.23	N/A
QBE	QBE Insurance Group	29581.24	19.57	-0.41	N/A
QRI	Qualitas Re Income	769.31	1.64	-0.30	N/A
SDF	Steadfast Group Ltd	6615.62	5.96	-0.33	N/A
SOL	Soul Pattinson (W.H)	13095.23	34.92	-1.94	N/A
SQ2	Block	7487.63	149.00	-1.77	N/A
SUN	Suncorp Group Ltd	25179.14	19.48	-1.57	N/A
TYR	Tyro Payments	458.48	0.85	-2.30	N/A
ZIP	ZIP Co Ltd	4047.33	2.94	-5.16	Becoming a substantial holder

➤ Property stocks:

Code	Company Name	Market Cap (\$m)	Price (\$)	Daily Price Change (%)	Newsflash
ABG	Abacus Group	1036.64	1.15	-1.29	N/A
ARF	Arena REIT.	1549.71	3.85	-1.28	N/A
ASK	Abacus Storage King	1544.07	1.16	-1.28	N/A
BWP	BWP Trust	2361.72	3.30	-0.30	N/A
CHC	Charter Hall Group	6981.44	14.76	0.00	Ceasing to be a substantial holder
CIP	Centuria I REIT	1822.25	2.86	-0.35	N/A
CLW	Chtr H Lwr	2710.45	3.79	-0.26	N/A
CMW	Cromwell Prop	968.98	0.36	-4.05	N/A
CNI	Centuria Capital	1539.82	1.84	-0.81	N/A
COF	Centuria Office REIT	669.02	1.12	-0.45	N/A
CQE	Charter Hall Soc In	956.32	2.54	-0.78	N/A
CQR	Charter Hall Retail	1877.37	3.24	0.31	HPI: Takeover bid for HPI - Notice of status of conditions
DXI	Dexus Industria REIT	824.90	2.60	0.00	N/A
DXS	Dexus	7378.38	6.86	0.00	N/A
GMG	Goodman Group	72258.34	36.98	-2.17	N/A
GOZ	Growthpoint Property	1855.09	2.45	-0.41	N/A
GPT	GPT Group	8792.50	4.56	-0.65	N/A
HCW	Hlthcohcwellsreit	589.05	1.04	-0.95	N/A
HDN	Homeco Daily Needs	2457.05	1.18	0.00	N/A
HPI	Hotel Property	743.08	3.78	0.00	HPI: Takeover bid for HPI - Notice of status of conditions
INA	Ingenia Group	1944.17	4.69	-1.68	N/A
LIC	Lifestyle Communit.	1043.31	8.30	-3.15	N/A
LLC	Lendlease Group	4740.62	6.82	-0.73	N/A
MGR	Mirvac Group	8286.31	2.10	0.00	N/A
NSR	National Storage	3261.06	2.36	0.00	N/A
PXA	Pexagroup	2267.66	12.72	-0.39	N/A
RFF	Rural Funds Group	689.81	1.77	-0.28	N/A
RGN	Region Group	2476.79	2.11	-0.94	December 2024 Transactions and Property Valuations Update
SCG	Scentre Grp	18778.31	3.55	-1.66	N/A
SGP	Stockland	11959.73	4.97	-0.80	N/A
URW	Unibailrodawestfield	691.62	6.00	-6.25	N/A
VCX	Vicinity Centres	9514.26	2.07	-0.96	N/A
WPR	Waypoint REIT	1619.18	2.39	-0.83	N/A

➤ Tech stocks:

Code	Company Name	Market Cap (\$m)	Price (\$)	Daily Price Change (%)	Newsflash
360	Life360 Inc.	4370.87	22.77	-5.24	N/A
AD8	Audinate Group Ltd	675.07	7.75	-4.32	N/A
BRN	Brainchip Ltd	433.94	0.25	11.36	US\$1.8 million contract with Air Force Research Laboratory
CDA	Codan Limited	3010.19	16.00	-3.50	N/A
DDR	Dicker Data Limited	1585.23	8.39	-4.44	N/A
DTL	Data3 Limited	1200.54	7.47	-3.61	N/A
GTK	Gentrack Group Ltd	1283.48	12.16	-1.22	N/A
HSN	Hansen Technologies	1138.68	5.37	-3.94	N/A
IFM	Infomedia Ltd	520.46	1.39	0.00	N/A
IRE	IRESS Limited	1656.82	8.88	0.11	N/A
MAQ	Macquarie Technology	2289.48	85.83	-3.38	N/A
MP1	Megaport Limited	1258.95	7.43	-5.35	N/A
NVX	Novonix Limited	363.41	0.63	-2.34	N/A
NXL	Nuix Limited	2222.53	6.43	-4.32	N/A
NXT	NEXTDC Limited	10406.76	15.70	-3.38	N/A
RUL	Rpmglobal Hldgs Ltd	704.35	3.13	-1.57	N/A
SDR	Siteminder	1745.32	6.06	-2.88	N/A
TNE	Technology One	10328.48	30.52	-3.26	N/A
WBT	Weebit Nano Ltd	571.59	2.80	1.45	N/A
WTC	WiseTech Global Ltd	43922.55	125.60	-4.36	Release of 71,548 ordinary shares from escrow
XRO	Xero Ltd	27324.20	170.99	-4.37	N/A

➤ Communication stocks:

Code	Company Name	Market Cap (\$m)	Price (\$)	Daily Price Change (%)	Newsflash
ABB	Aussie Broadband	1094.18	3.66	-1.08	N/A
CAR	CAR Group Limited	15190.79	39.25	-2.41	N/A
CNU	Chorus Limited	3575.23	8.26	0.24	Ongoing Disclosure Notice
DHG	Domain Holdings Aus	1718.11	2.67	-1.84	N/A
EVT	EVT Limited	1921.02	11.94	1.02	N/A
NEC	Nine Entertainment	2037.70	1.27	-1.56	N/A
NWS	News Corp..	1594.33	50.48	-0.20	Rupert Murdoch Loses Bid to Change Control of Family Trust
OML	Ooh!Media Limited	668.09	1.22	-2.02	Contract update - Auckland Transport
REA	REA Group	33132.36	241.79	-3.58	N/A
SEK	Seek Limited	9195.26	25.09	-2.64	N/A
SLC	Superloop Limited	1177.19	2.25	-2.17	N/A
SPK	Spark New Zealand	4813.08	2.55	-2.30	N/A
TLS	Telstra Group	46333.25	4.06	1.25	N/A
TPG	TPG Telecom Limited	8274.07	4.39	-1.35	N/A
TUA	Tuas Limited	2994.15	5.94	-7.48	N/A

➤ Utility stocks:

Code	Company Name	Market Cap (\$m)	Price (\$)	Daily Price Change (%)	Newsflash
AGL	AGL Energy Limited.	7380.04	10.92	-0.46	N/A
APA	APA Group	9427.25	7.34	0.82	N/A
ORG	Origin Energy	18364.49	10.63	-0.28	N/A

Disclaimer

This document was prepared by Deep Data Analytics. Deep Data Analytics and its related bodies corporate (“DDA”), its directors and/or employees charge a subscription for this report. Deep Data Analytics as principal, its directors and/or employees and their associates may hold securities in the companies mentioned in this report. Deep Data Analytics may seek to do business with any of the companies outlined in this report and should not be considered independent. This document contains Deep Data Analytics proprietary processed data and publicly available information. The information has not been verified or audited, and you are strongly advised to make your own independent assessment and investigation in respect of any matters contained in the document, including to seek independent professional advice. The document has been provided to you for your general information purposes only. It does not consider your particular investment objectives, financial situation or other specific needs. This report has been provided to you on the condition that it is purely general advice and not to be considered as personal advice at any level.

Deep Data Analytics or their respective directors, officers, employees or shareholders makes any representation or warranty, expressed or implied, and takes no responsibility, in respect of the accuracy, reliability, completeness or thoroughness of any of the information contained in this document. Each of those parties, to the maximum extent permitted by law, expressly disclaims, and as a recipient, you expressly release each of those parties from, all liabilities, including (without limitation) liability for negligence in respect of, any part of the information contained in the document. No such parties are under any obligation to update any information in this document or correct any inaccuracies or omissions that may exist or become apparent. Neither this document nor any additional information which may subsequently be provided to a recipient shall constitute or form part of any offer, solicitation, invitation, advice or recommendation to sell or acquire any securities or assets.

Deep Data Analytics provides this financial advice as an honest and reasonable opinion held at a point in time about an investment’s risk profile and merit and the information is provided by the Deep Data Analytics in good faith. The views of the adviser(s) do not necessarily reflect the views of the AFS Licensee. Deep Data Analytics has no obligation to update the opinion unless Deep Data Analytics is currently contracted to provide such an updated opinion. Deep Data Analytics does not warrant the accuracy of any information it sources from others. All statements as to future matters are not guaranteed to be accurate and any statements as to past performance do not represent future performance. Assessment of risk can be subjective. Portfolios of equity investments need to be well diversified and the risk appropriate for the investor. Equity investments in listed or unlisted companies yet to achieve a profit or with an equity value less than \$50 million should collectively be a small component of a balanced portfolio, with smaller individual investment sizes than otherwise. Investors are responsible for their own investment decisions, unless a contract stipulates otherwise. Deep Data Analytics does not stand behind the capital value or performance of any investment. Subject to any terms implied by law and which cannot be excluded, Deep Data Analytics shall not be liable for any errors, omissions, defects or misrepresentations in the information (including by reasons of negligence, negligent misstatement or otherwise) or for any loss or damage (whether direct or indirect) suffered by persons who use or rely on the information. If any law prohibits the exclusion of such liability, Deep Data Analytics limits its liability to the re-supply of the Information, provided that such limitation is permitted by law and is fair and reasonable.

Copyright © Deep Data Analytics. All rights reserved. This material is proprietary to Deep Data Analytics and may not be disclosed to third parties. Any unauthorized use, duplication or disclosure of this document is prohibited. The content has been approved for distribution by Deep Data Analytics (ABN 67 159 532 213 AFS Representative No. 1282992) which is a corporate approved representative of BR Securities (ABN 92 168 734 530 and holder of AFSL No. 456663). Deep Data Analytics is the business name of ABN 67 159 532 213.