



INVESTMENT MOTTO: Every cycle offers risk and return. Investing is all about how you manage each cycle to get the best out of it.

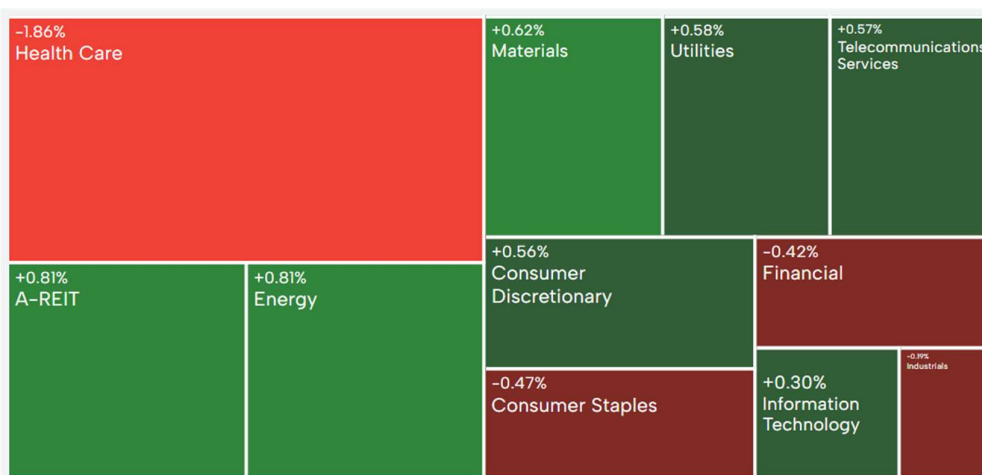
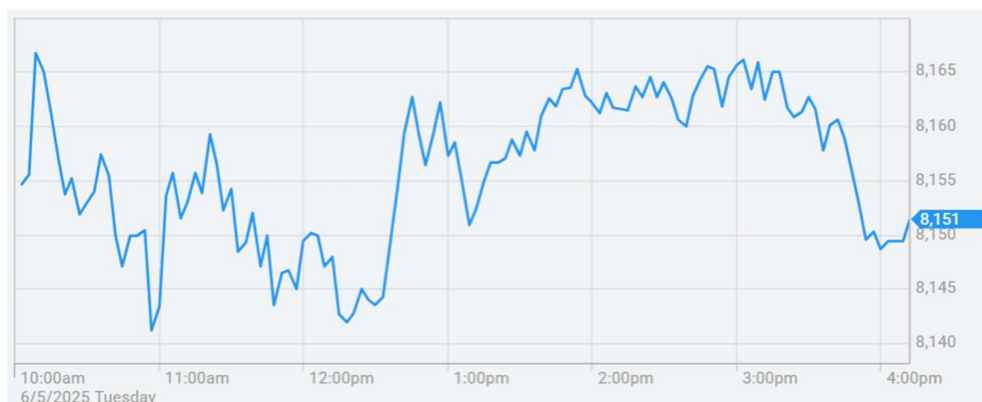
MARKET COMMENTARY

The Aussie market was mainly boring and flat all day on low turnover. Global funds started to take profit in their favorite top two big caps in CBA and BHP but had to turn that around as the market started to roll over. US market remains stretched after the buyback boosted bounce from tariff threatened pullback left the market with no real upside. Trump et al are jumping from one scare story to another. We just flashed 100% tariff on movies with no detail or how it was going to be executed but the market is expecting semiconductor tariffs coming soon. Taiwan dollar spiked against USD in the last 24 hours as insiders start trading for the risk to TSMC that makes all the chips for everyone including Nvidia to Apple. US is going to try and bully TSMC to move production to US. The reality is that Taiwan's protection is purely reliant on TSMC. If TSMC moves production outside Taiwan, no one will defend it. Gold is flying again. Inflation is flashing red and central banks are flashing denial. RBA is a bubble feeder. AMP providing 10-year interest only home loan is peak bad policy outcome but it will get worse. It may be different this time!

CNBC on US tariff on China retail > The closure of a trade loophole and prohibitive tariffs on China have upended Temu and Shein's business model in the United States. And yet the e-commerce companies are likely to remain a dominant force in American online retailing, experts suggest. On Friday, the de minimis rule — a policy that had exempted U.S. imports worth \$800 from trade tariffs — officially closed for shipments from China. This has seen Temu and Shein exposed to duties as high as 120% or a flat fee of \$100, set to rise to \$200 in June. The small-package tariff exemption had been key to the companies' ability to maintain budget prices on the merchandise they shipped from China. In the lead-up to its removal, prices of goods shipped directly from China on Temu and Shein surged, with Temu later ending direct shipments from outside the U.S. altogether.

CNBC on Buff retires > Warren Buffett dropped something of a bombshell at this year's meeting for Berkshire Hathaway shareholders on Saturday, announcing that he'd ask the board to replace him as CEO at the end of the year, with longtime heir apparent Greg Abel. The Oracle of Omaha received an ovation upon sharing the news, which he met with his trademark wit. "The enthusiasm shown by the audience's response can be interpreted in two ways," Buffett, 94, said. "But I'll take it as positive." No kidding. If you want to know what Berkshire shareholders think of their CEO, take a look at his track record. Berkshire Hathaway's stock rose by 5,502,284% between the time Buffett took the helm in 1965 and year-end 2024, according to the company's most recent annual report. The S&P 500 delivered a total return of 39,054% over the same period.

Historically, 75% of retail investors have experienced losses during positive market periods. Investors are now facing market cycles that are unprecedented in their lifetime, making risk management a crucial aspect of investing. Going forward, the trend towards active investing is reemerging as investors seek quality, relative value, profitability, and dividends. To navigate this new paradigm, it's important to have an active investment strategy that is flexible and adaptable to changing market conditions!



Security	Last	+/-	%	Security	Last	+/-	%	Security	Last	+/-	%
S&P 300	8086.20	-4.10	-0.05	DXY	99.3800	-0.2250	-0.23	SPTGLD	3373.09	38.63	1.16
S&P 200	8151.40	-6.40	-0.08	AUDUSD	0.6462	-0.0006	-0.10	TWI	59.90	-0.30	-0.50
Mid Cap	10275.20	53.20	0.52	NZDAUD	0.9269	0.0044	0.48	WTIS	58.45	1.32	2.31
Small Cap	3090.90	32.40	1.06	GBPAUD	2.0626	0.0069	0.34	BRENT	61.52	1.29	2.14
Micro Cap	2260.40	30.90	1.39	EURAUD	1.7557	0.0065	0.37	COPP3M	9359.00	0.00	0.00
NZ50G	12421.09	-0.16	0.00	EURUSD	1.1345	0.0030	0.26	NICK3M	15525.00	0.00	0.00
JAPAN	36830.69	0.00	0.00	USDJPY	143.2500	-0.4475	-0.31	ZINC	2581.50	0.00	0.00
KOSPI	2559.79	0.00	0.00	CNYUSD	0.1387	-0.0002	-0.15	Security	Last	+/-	%
SING	3855.97	2.90	0.08	Security	Last	+/-	%	DOWFUT	41225.00	-94.00	-0.23
SHANGHAI	3316.11	37.08	1.13	USBON	4.3653	0.0550	1.28	NASFUT	19911.50	-144.00	-0.72
HNGKNG	22666.53	161.85	0.72	USLBR	4.8670	0.0820	1.71	SPFUT	5644.25	-27.50	-0.48
GERMAN	23271.22	-73.32	-0.31	BOND10	4.2840	0.0670	1.59				
CAC40	7710.67	-17.26	-0.22	BBSR3M	3.8500	-0.0147	-0.38				
FTSE	8596.35	0.00	0.00	VIX	23.64	0.96	4.23				
DOWJON	41218.83	-98.60	-0.24	XVI	12.32	-0.36	-2.80				
NASDAQ	17844.24	-133.49	-0.74								
SP500	5650.38	-36.29	-0.64								

Sources: AFR, AAP, ASX, Bloomberg, CNBC, CNN, FactSet, Hedgeye, IRESS, Market Watch, Reuters, S&P, Trading Economics

The ISM Services PMI unexpectedly jumped to 51.6 in April 2025 from a nine-month low of 50.8 in March and above forecasts of 50.6. New orders (52.3 vs 50.4) and inventories (53.4 vs 50.3) grew at a faster rate and business activity remained in expansion territory (53.7 vs 55.9). Also, employment continued to contract although at a slower pace (49 vs 46.2). Meanwhile, there was a slower supplier delivery performance (51.3 vs 50.6) and price pressures jumped to the highest since February 2023 (65.1 vs 60.9). "Regarding tariffs, respondents cited actual pricing impacts as concerns, more so than uncertainty and future pressures. Respondents continue to mention federal agency budget cuts as a drag on business, but overall, results are improving", according to Steve Miller, Chair of the Institute for Supply Management Services Business Survey Committee.

The seasonally adjusted number of total dwellings approved in Australia fell by 8.8% month-over-month to a six-month low of 15,220 units in March 2025, sharply missing market expectations of a 0.6% decline and accelerating from a marginally revised 0.2% drop. It marked the second consecutive monthly decrease and the steepest fall since June 2023, driven by declines in approvals for both private sector houses (-4.5% vs 1.1% in February) and private sector dwellings excluding houses (-15.1% vs -1.3%).

The Caixin China General Services PMI declined to 50.7 in April 2025, down from March's three-month high of 51.9 and below market forecasts of 51.7. It marked the softest expansion in the services sector since last September, as new orders grew at the slowest pace in 28 months, impacted by disruptions in goods trade amid new US tariffs. Meanwhile, new export business rose only fractionally, with some firms noting improved demand due to rising tourism activity. Employment declined for the second consecutive month amid concerns over rising costs. Regarding prices, input cost inflation accelerated to a three-month high, driven by higher staff expenses and raw material prices. Output prices dropped for the third consecutive month amid efforts to support sales in a highly competitive market. Finally, business sentiment weakened to the second-lowest level since data collection began in November 2005, due to concerns over the negative impact of shifting trade policy.

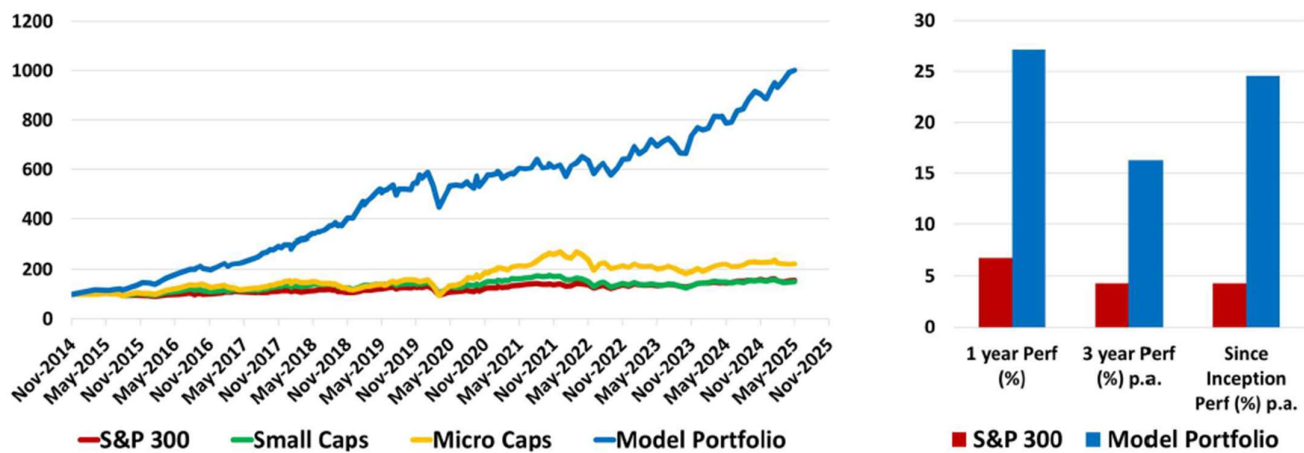
The HSBC India Services PMI was revised lower to 58.7 in April 2025, down from the preliminary estimate of 59.1. However, the figure remained above both the March reading and market expectations of 58.5, marking the 45th consecutive month of growth in services activity. The expansion was largely driven by a faster rise in new orders, with foreign sales increasing at the fastest pace since July 2024. As a result, output continued to grow, and employment rose for the 35th consecutive month. Moreover, the pace of job creation was strong and faster than in March. On the price front, input cost inflation eased to its softest pace in six months at the start of the 2025/26 fiscal year. Meanwhile, output price inflation accelerated as firms sought to pass higher costs on to clients. Lastly, business sentiment weakened to its lowest level in nearly two years amid concerns over rising competition.

The HCOB Germany Services PMI was revised slightly higher to 49 in April 2025 from a flash estimate of 48.8 but fell from 50.9 in the previous month. This marked the first contraction since November and the sharpest decline since February 2024, reflecting subdued demand and heightened customer caution amid ongoing economic and political uncertainty. New business decreased for the eighth consecutive month, with firms citing challenging economic conditions and tariff-related concerns as key factors. Meanwhile, employment continued to rise in April, accelerating for the second straight month and marking the fastest pace of job creation since May 2024. On the cost front, input prices picked up slightly from a five-month low in the previous month and remaining above its long-run average.

Services PMI In the Euro Area decreased to 50.10 points in April from 51 points in March of 2025. Services PMI in Euro Area averaged 51.50 points from 2007 until 2025, reaching an all time high of 59.80 points in July of 2021 and a record low of 12.00 points in April of 2020.

Deep Data Analytics provides the framework and support to make you a professional investor!

Yield investing can outperform in an expensive market with risk management!



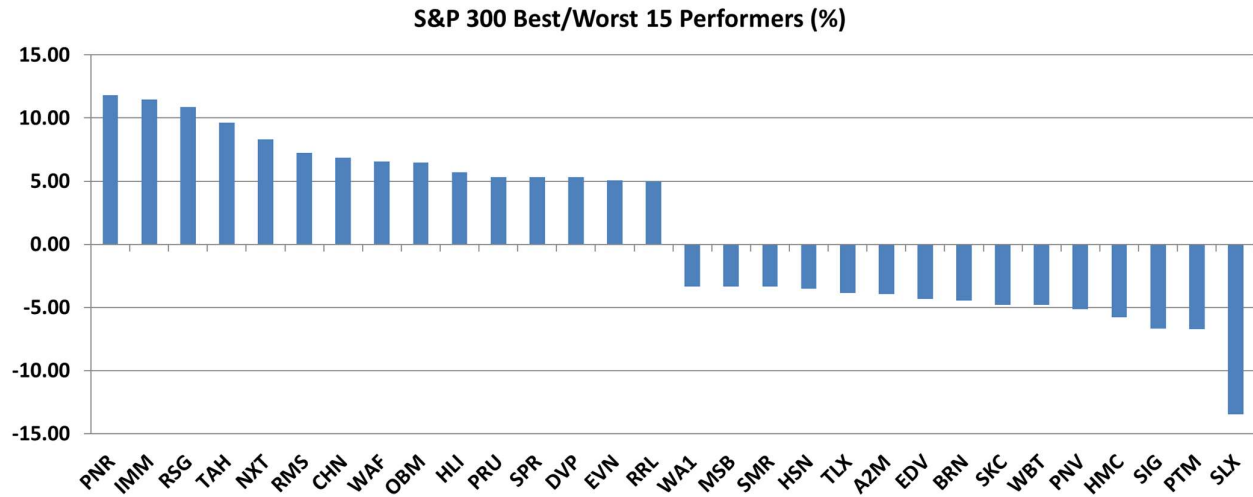
For more market and investment strategies,
visit...

www.deepdataanalytics.com.au

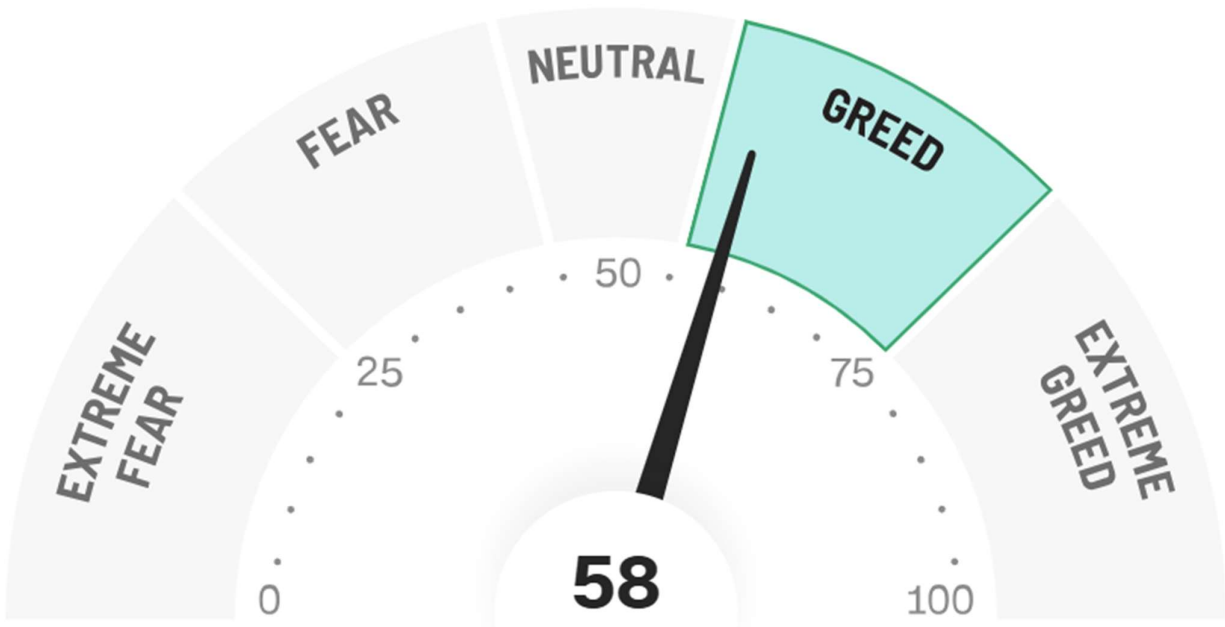
or email...

info@deepdataanalytics.com.au

1. Movers and Shakers in S&P 300 >



2. CNN Fear & Greed Index >



TODAY'S BEST 30 IN S&P 300

Code	Company Name	Market Cap (\$m)	Price (\$)	Daily Price Change (%)	Newsflash
PNR	Pantoro Limited	1086.03	3.12	11.83	N/A
IMM	Immutep Ltd	445.42	0.34	11.48	N/A
RSG	Resolute Mining	1075.17	0.56	10.89	N/A
TAH	TABCORP Holdings Ltd	1303.16	0.63	9.65	Presentation to Macquarie Australia Conference
NXT	NEXTDC Limited	8107.67	13.71	8.29	Contract Utilisation and Forward Order Book Update
RMS	Ramelius Resources	3036.43	2.81	7.25	Becoming a substantial holder
CHN	Chalice Mining Ltd	425.98	1.17	6.85	Further process flowsheet improvements at Gonneville
WAF	West African Res Ltd	2598.76	2.43	6.58	N/A
OBM	Ora Banda Mining Ltd	1892.80	1.07	6.47	N/A
HLI	Helia Group Limited	1291.43	5.01	5.70	N/A
PRU	Perseus Mining Ltd	4615.10	3.56	5.33	N/A
SPR	Spartan Resources	2652.84	2.18	5.31	N/A
DVP	Develop Global Ltd	872.46	3.37	5.31	N/A
EVN	Evolution Mining Ltd	16259.31	8.53	5.05	N/A
RRL	Regis Resources	3346.77	4.65	4.97	N/A
BGL	Bellevue Gold Ltd	1358.22	0.97	4.89	N/A
EMR	Emerald Res NL	2728.28	4.35	4.82	N/A
SGR	The Star Ent Grp	301.21	0.11	4.76	N/A
VAU	Vault Minerals Ltd	2993.09	0.46	4.55	N/A
IPX	Iperionx Limited	1066.00	3.49	4.49	N/A
VUL	Vulcan Energy	976.91	4.69	4.45	N/A
GMD	Genesis Minerals	4428.40	4.08	4.08	N/A
HUB	HUB24 Ltd	6111.50	78.29	3.98	N/A
CYL	Catalyst Metals	1270.83	5.83	3.92	N/A
VCX	Vicinity Centres	10768.39	2.45	3.81	March 2025 quarterly update
YAL	Yancoal Aust Ltd	6232.47	4.90	3.81	N/A
VSL	Vulcan Steel	950.17	7.48	3.74	N/A
NST	Northern Star	27521.80	19.95	3.69	N/A
ALD	Ampol Limited	5745.46	24.95	3.48	N/A
GWA	GWA Group Ltd	623.23	2.43	3.40	N/A

TODAY'S WORST 30 IN S&P 300

Code	Company Name	Market Cap (\$m)	Price (\$)	Daily Price Change (%)	Newsflash
SLX	Silex Systems	742.88	2.70	-13.46	Uranium Enrichment Project Update
PTM	Platinum Asset	390.05	0.63	-6.72	Funds Under Management - 30 April 2025
SIG	Sigma Health Ltd	36362.66	2.94	-6.67	Macquarie Sydney Conference Presentation
HMC	HMC Capital Limited	2133.22	4.87	-5.80	HMC: Macquarie Conference Presentation
PNV	Polynovo Limited	873.92	1.20	-5.14	N/A
WBT	Weebit Nano Ltd	369.01	1.69	-4.79	N/A
SKC	Skycity Ent Grp Ltd	794.41	1.00	-4.78	Updated FY25 Full Year Earnings Guidance
BRN	Brainchip Ltd	455.79	0.22	-4.44	Annual General Meeting Chair and CEO Addresses
EDV	Endeavour	7450.48	3.98	-4.33	N/A
A2M	The A2 Milk Company	6226.56	8.26	-3.95	N/A
TLX	Telix Pharmaceutical	9852.54	28.04	-3.84	N/A
HSN	Hansen Technologies	1045.66	4.95	-3.51	N/A
SMR	Stanmore Resources	1748.70	1.88	-3.35	N/A
MSB	Mesoblast Limited	2293.62	1.74	-3.34	N/A
WA1	Wa1ResourcesLtd	790.24	11.28	-3.34	N/A
AZJ	Aurizon Holdings Ltd	5497.02	3.00	-3.23	Aurizon Business Update
IMD	Imdex Limited	1479.22	2.81	-2.77	IMDEX Macquarie Australia Conference Presentation 2025
BRG	Breville Group Ltd	4135.47	28.00	-2.54	N/A
CTD	Corp Travel Limited	1712.01	11.41	-2.48	N/A
CSL	CSL Limited	124350.52	250.47	-2.47	N/A
ILU	Iluka Resources	1765.91	4.01	-2.43	N/A
REH	Reece Limited	10439.10	15.77	-2.41	N/A
RHC	Ramsay Health Care	8062.89	34.10	-2.38	N/A
GYG	Guzman Y Gomez Ltd	3278.19	31.18	-2.35	N/A
NVX	Novonix Limited	276.68	0.43	-2.30	N/A
SGH	SGH Limited	20874.94	50.15	-2.22	Macquarie Conference Reference Material
BOT	Botanix Pharma Ltd	879.27	0.44	-2.22	N/A
WTC	WiseTech Global Ltd	31511.45	92.09	-2.21	WiseTech Global at Macquarie Australia Conference
CU6	Clarity Pharma	777.67	2.37	-2.07	N/A
WBC	Westpac Banking Corp	111082.91	31.81	-1.97	N/A

CHECKING S&P 300 BY THE SECTOR

➤ Energy stocks:

Code	Company Name	Market Cap (\$m)	Price (\$)	Daily Price Change (%)	Newsflash
AEL	Amplitude Energy	490.51	0.19	0.00	N/A
ALD	Ampol Limited	5745.46	24.95	3.48	N/A
BMN	Bannerman Energy Ltd	461.41	2.54	-1.55	N/A
BOE	Boss Energy Ltd	1497.87	3.54	-1.94	Change in substantial holding
BPT	Beach Energy Limited	2634.94	1.18	2.16	N/A
DYL	Deep Yellow Limited	1147.99	1.19	0.42	Corporate Update - 2025 Macquarie Australia Conference
KAR	Karoo Energy Ltd	1054.65	1.42	1.07	N/A
LOT	Lotus Resources Ltd	413.81	0.18	0.00	Investor Presentation - Macquarie Australia Conference
NHC	New Hope Corporation	3119.29	3.72	0.81	N/A
NXG	Nexgenenergycanada	857.28	8.15	0.87	N/A
PDN	Paladin Energy Ltd	2469.56	6.10	-1.45	N/A
STO	Santos Ltd	18966.99	5.88	0.68	N/A
STX	Strike Energy Ltd	501.71	0.18	2.86	CFO and Company Secretary Transition
VEA	Viva Energy Group	2817.75	1.79	2.58	Macquarie Australia Conference Presentation
WDS	Woodside Energy	37728.16	19.94	0.35	N/A
WHC	Whitehaven Coal	4166.27	5.05	1.41	N/A
YAL	Yancoal Aust Ltd	6232.47	4.90	3.81	N/A

➤ Material (Ex Mining) stocks:

Code	Company Name	Market Cap (\$m)	Price (\$)	Daily Price Change (%)	Newsflash
A4N	Alpha Hpa Ltd	1011.37	0.90	1.12	Change of Director's Interest Notices
AMC	Amcort PLC	9293.29	14.41	0.07	N/A
BKW	Brickworks Limited	3936.80	25.99	0.97	N/A
DNL	Dyno Nobel Ltd	4324.22	2.34	0.86	N/A
JHX	James Hardie Indust	16033.65	37.47	0.46	N/A
NUF	Nufarm Limited	1447.68	3.78	0.00	N/A
ORA	Orora Limited	2382.71	1.85	1.09	N/A
ORI	Orica Limited	8099.93	16.48	-0.84	N/A

➤ **Gold stocks:**

Code	Company Name	Market Cap (\$m)	Price (\$)	Daily Price Change (%)	Newsflash
BGL	Bellevue Gold Ltd	1358.22	0.97	4.89	N/A
CMM	Capricorn Metals	4016.07	9.52	2.15	Investor Presentation - Macquarie Australia Conference
CYL	Catalyst Metals	1270.83	5.83	3.92	N/A
EMR	Emerald Res NL	2728.28	4.35	4.82	N/A
EVN	Evolution Mining Ltd	16259.31	8.53	5.05	N/A
GMD	Genesis Minerals	4428.40	4.08	4.08	N/A
GOR	Gold Road Res Ltd	3530.80	3.29	1.23	N/A
IPX	Iperionx Limited	1066.00	3.49	4.49	N/A
NEM	Newmont Corporation	9176.39	83.15	2.39	N/A
NST	Northern Star	27521.80	19.95	3.69	N/A
OBM	Ora Banda Mining Ltd	1892.80	1.07	6.47	N/A
PDI	Predictive Disc Ltd	969.53	0.37	-1.35	N/A
PNR	Pantoro Limited	1086.03	3.12	11.83	N/A
PRU	Perseus Mining Ltd	4615.10	3.56	5.33	N/A
RMS	Ramelius Resources	3036.43	2.81	7.25	Becoming a substantial holder
RRL	Regis Resources	3346.77	4.65	4.97	N/A
RSG	Resolute Mining	1075.17	0.56	10.89	N/A
SPR	Spartan Resources	2652.84	2.18	5.31	N/A
VAU	Vault Minerals Ltd	2993.09	0.46	4.55	N/A
WAF	West African Res Ltd	2598.76	2.43	6.58	N/A
WGX	Westgold Resources.	2555.83	2.80	3.32	N/A

➤ **Mining (Ex Gold) stocks:**

Code	Company Name	Market Cap (\$m)	Price (\$)	Daily Price Change (%)	Newsflash
AAI	Alcoa Corporation	2381.37	38.50	-1.23	N/A
ADT	Adriatic Metals	1200.67	3.92	-0.76	N/A
BHP	BHP Group Limited	191618.71	37.60	-0.40	N/A
BSL	BlueScope Steel Ltd	10316.10	23.38	-0.60	N/A
CHN	Chalice Mining Ltd	425.98	1.17	6.85	Further process flowsheet improvements at Gonneville
CIA	Champion Iron Ltd	2368.41	4.52	-1.09	N/A
CRN	Coronado Global Res	276.61	0.17	3.03	N/A
CSC	Capstonecorp	1426.01	7.47	0.27	N/A
DRR	Deterra	1935.84	3.59	-1.91	N/A
DVP	Develop Global Ltd	872.46	3.37	5.31	N/A
FMG	Fortescue Ltd	49171.07	15.99	0.13	N/A
IGO	IGO Limited	3013.93	4.00	0.50	N/A
ILU	Iluka Resources	1765.91	4.01	-2.43	N/A
IMD	Imdex Limited	1479.22	2.81	-2.77	IMDEX Macquarie Australia Conference Presentation 2025
INR	Ioneer Ltd	306.24	0.13	0.00	Results of Initial Upgrading Testwork
LTR	Liontown Resources	1225.87	0.52	1.98	Investor Presentation - 2025 Macquarie Australia Conference
LYC	Lynas Rare Earths	7814.24	8.33	-0.36	N/A
MAC	MAC Copper	572.73	13.99	-0.29	N/A
MIN	Mineral Resources.	4073.83	20.35	-1.83	N/A
NIC	Nickel Industries	2582.26	0.60	0.00	N/A
PLS	Pilbara Min Ltd	4762.54	1.47	-0.68	N/A
PMT	Patriotbatterymetals	138.31	0.25	-1.96	N/A
PRN	Perenti Limited	1272.77	1.38	0.73	Becoming a substantial holder
RIO	Rio Tinto Limited	42908.88	115.26	-0.29	N/A
S32	South32 Limited	12623.76	2.84	1.43	N/A
SFR	Sandfire Resources	4614.57	10.28	2.19	N/A
SGM	Sims Limited	2855.70	14.83	0.34	N/A
SMR	Stanmore Resources	1748.70	1.88	-3.35	N/A
VSL	Vulcan Steel	950.17	7.48	3.74	N/A
VUL	Vulcan Energy	976.91	4.69	4.45	N/A
WA1	Wa1ResourcesLtd	790.24	11.28	-3.34	N/A

➤ **Industrial stocks:**

Code	Company Name	Market Cap (\$m)	Price (\$)	Daily Price Change (%)	Newsflash
AIA	Auckland Internation	12221.91	7.24	0.00	N/A
ALQ	ALS Ltd	8359.23	17.35	0.64	N/A
ALX	Atlas Arteria	7573.35	5.17	-0.96	N/A
ASB	Austal Limited	2156.44	5.13	0.20	Macquarie Australia Conference 2025
AZJ	Aurizon Holdings Ltd	5497.02	3.00	-3.23	Aurizon Business Update
BXB	Brambles Limited	28623.53	20.99	0.53	N/A
CPU	Computershare Ltd	22775.63	38.94	-0.05	Macquarie Australia Conference 2025 presentation
CWY	Cleanaway Waste Ltd	5892.46	2.62	-0.76	N/A
DBI	Dalrymple Bay	2047.50	4.11	-0.48	N/A
DOW	Downer EDI Limited	3821.25	5.71	0.35	N/A
DRO	Droneshield Limited	1153.80	1.31	-1.14	N/A
FBU	Fletcher Building	3203.19	2.96	-0.67	N/A
GWA	GWA Group Ltd	623.23	2.43	3.40	N/A
IPH	IPH Limited	1232.01	4.53	-0.88	N/A
JLG	Johns Lyng Group	662.49	2.32	-0.85	N/A
KLS	Kelsian Group Ltd	744.03	2.79	1.82	N/A
MGH	Maas Group Holdings	1425.69	3.91	-0.51	N/A
MMS	McMillan Shakespeare	1079.47	15.94	2.84	N/A
MND	Monadelphous Group	1571.46	16.18	1.76	N/A
NWH	NRW Holdings Limited	1221.16	2.74	2.62	N/A
QAN	Qantas Airways	13815.51	9.24	1.20	N/A
QUB	Qube Holdings Ltd	7270.23	4.11	0.00	N/A
RDX	Redox Limited	1464.98	2.75	-1.43	N/A
REH	Reece Limited	10439.10	15.77	-2.41	N/A
RWC	Reliance Worldwide	3163.78	4.09	0.00	N/A
SGH	SGH Limited	20874.94	50.15	-2.22	Macquarie Conference Reference Material
SIQ	Smartgrp Corporation	1066.74	8.14	2.91	N/A
SLX	Silex Systems	742.88	2.70	-13.46	Uranium Enrichment Project Update
SRG	SRG Global Ltd	788.17	1.31	0.00	N/A
SSM	Service Stream	1136.43	1.87	1.08	N/A
TCL	Transurban Group	44916.10	14.37	-0.55	Transurban QLD prices CHF120m issuance in Swiss bond market
VNT	Ventiaservicesgroup	3665.09	4.44	2.30	N/A
WOR	Worley Limited	6370.43	11.96	-0.66	N/A

➤ **Consumer stocks:**

Code	Company Name	Market Cap (\$m)	Price (\$)	Daily Price Change (%)	Newsflash
ADH	Adairs Limited	447.16	2.50	-1.19	N/A
ALL	Aristocrat Leisure	42082.78	67.79	0.76	N/A
AOV	Amotiv	1057.04	7.90	2.07	N/A
APE	Eagers Automotive	4774.37	18.72	1.19	N/A
ARB	ARB Corporation.	2609.66	31.00	-1.21	N/A
AX1	Accent Group Ltd	1055.59	1.85	-0.80	Skechers 3G Announcement
BAP	Bapcor Limited	1724.22	5.17	1.77	Kim Kerr appointed as Bapcor's Chief Financial Officer
BRG	Breville Group Ltd	4135.47	28.00	-2.54	N/A
CKF	Collins Foods Ltd	954.85	8.17	0.86	N/A
CTD	Corp Travel Limited	1712.01	11.41	-2.48	N/A
CTT	Cettire	169.65	0.44	-1.12	N/A
DMP	Domino Pizza Enterpr	2379.15	24.93	-1.03	N/A
FLT	Flight Centre Travel	2845.05	12.61	-1.56	N/A
GEM	G8 Education Limited	1007.84	1.27	1.61	N/A
GYG	Guzman Y Gomez Ltd	3278.19	31.18	-2.35	N/A
HVN	Harvey Norman	6504.15	5.29	1.34	N/A
IEL	Idp Education Ltd	2649.76	9.42	-1.05	N/A
JBH	JB Hi-Fi Limited	11346.68	103.61	-0.16	N/A
JIN	Jumbo Interactive	627.53	10.11	0.60	N/A
KGK	Kogan.Com Ltd	452.24	4.55	0.00	N/A
LNW	Light & Wonder Inc.	3757.78	145.95	2.76	N/A
LOV	Lovisa Holdings Ltd	2778.96	24.85	-1.00	N/A
MYR	Myer Holdings Ltd	1209.64	0.70	-0.71	N/A
NCK	Nick Scali Limited	1501.06	18.00	2.56	N/A
PFP	Propel Funeral	707.80	5.15	0.39	N/A
PMV	Premier Investments	3275.94	20.53	0.20	N/A
PWH	Pwr Holdings Limited	681.82	6.82	0.59	N/A
SGR	The Star Ent Grp	301.21	0.11	4.76	N/A
SKC	Skycity Ent Grp Ltd	794.41	1.00	-4.78	Updated FY25 Full Year Earnings Guidance
SNL	Supply Network	1731.37	40.00	0.40	N/A
SUL	Super Ret Rep Ltd	2974.14	13.25	0.61	N/A
TAH	TABCORP Holdings Ltd	1303.16	0.63	9.65	Presentation to Macquarie Australia Conference
TLC	The Lottery Corp	11551.76	5.20	0.19	N/A
TPW	Temple & Webster Ltd	2058.63	17.23	-0.35	N/A
WEB	WEB Travel Group Ltd	1495.95	4.14	0.00	N/A
WES	Wesfarmers Limited	89553.38	79.54	0.75	N/A

➤ **Staple stocks:**

Code	Company Name	Market Cap (\$m)	Price (\$)	Daily Price Change (%)	Newsflash
A2M	The A2 Milk Company	6226.56	8.26	-3.95	N/A
BGA	Bega Cheese Ltd	1782.28	5.78	-1.03	N/A
COL	Coles Group	29428.24	22.00	0.27	N/A
EDV	Endeavour	7450.48	3.98	-4.33	N/A
ELD	Elders Limited	1184.93	6.26	0.48	N/A
GNC	GrainCorp Limited	1481.68	6.83	2.25	N/A
ING	Inghams Group	1297.16	3.55	1.72	Reaffirming FY25 Guidance & Trading Update
MTS	Metcash Limited	3548.42	3.23	0.00	N/A
RIC	Ridley Corporation	735.89	2.29	-1.72	N/A
SHV	Select Harvests	723.33	5.14	0.98	N/A
TWE	Treasury Wine Estate	7164.90	8.84	0.11	N/A
WOW	Woolworths Group Ltd	39750.66	32.48	-0.18	N/A

➤ **Healthcare stocks:**

Code	Company Name	Market Cap (\$m)	Price (\$)	Daily Price Change (%)	Newsflash
ACL	Au Clinical Labs	614.98	3.14	1.29	N/A
ANN	Ansell Limited	4538.89	31.20	0.32	N/A
BOT	Botanix Pharma Ltd	879.27	0.44	-2.22	N/A
COH	Cochlear Limited	17615.99	267.35	-0.75	N/A
CSL	CSL Limited	124350.52	250.47	-2.47	N/A
CU6	Clarity Pharma	777.67	2.37	-2.07	N/A
CUV	Clinuvel Pharmaceut.	568.90	11.30	-0.44	N/A
EBO	Ebos Group Ltd	7008.95	34.75	-0.03	N/A
FPH	Fisher & Paykel H.	19182.32	32.87	0.46	N/A
HLS	Healius	1136.40	1.58	0.96	N/A
IDX	Integral Diagnostics	890.11	2.36	-1.26	N/A
IMM	Immutep Ltd	445.42	0.34	11.48	N/A
MSB	Mesoblast Limited	2293.62	1.74	-3.34	N/A
MVF	Monash IVF Group Ltd	325.35	0.83	-1.20	N/A
MYX	Mayne Pharma Ltd	565.47	6.94	-0.29	N/A
NAN	Nanosonics Limited	1436.03	4.77	0.85	N/A
NEU	Neuren Pharmaceut.	1550.33	12.15	-1.22	N/A
OPT	Opthea Limited	738.77	0.60	0.00	N/A
PME	Pro Medicus Limited	24451.63	241.02	2.97	N/A
PNV	Polynovo Limited	873.92	1.20	-5.14	N/A
REG	Regis Healthcare Ltd	2141.88	7.17	0.84	N/A
RHC	Ramsay Health Care	8062.89	34.10	-2.38	N/A
RMD	ResMed Inc.	22036.71	37.33	0.48	N/A
SHL	Sonic Healthcare	12504.92	26.14	0.42	N/A
SIG	Sigma Health Ltd	36362.66	2.94	-6.67	Macquarie Sydney Conference Presentation
TLX	Telix Pharmaceutical	9852.54	28.04	-3.84	N/A

➤ **Bank stocks:**

Code	Company Name	Market Cap (\$m)	Price (\$)	Daily Price Change (%)	Newsflash
ANZ	ANZ Group Holdings	89319.25	29.84	-0.73	N/A
BEN	Bendigo and Adelaide	6486.28	11.34	-0.70	N/A
BOQ	Bank of Queensland.	4921.33	7.48	0.54	N/A
CBA	Commonwealth Bank.	279351.07	166.74	-0.11	N/A
JDO	Judo Cap Holdings	1615.06	1.44	-0.35	N/A
MYS	MyState Limited	661.14	3.86	-1.28	N/A
NAB	National Aust. Bank	109791.25	35.30	-1.53	N/A
WBC	Westpac Banking Corp	111082.91	31.81	-1.97	N/A

➤ **Diversified Financials / Insurance stocks:**

Code	Company Name	Market Cap (\$m)	Price (\$)	Daily Price Change (%)	Newsflash
AEF	Australian Ethical	585.25	5.23	1.36	N/A
AFG	Aust Finance Grp	506.34	1.89	0.80	N/A
AMP	AMP Limited	3164.67	1.26	0.40	N/A
ASX	ASX Limited	13719.48	70.11	-0.71	ASX Group Monthly Activity Report - April 2025
AUB	AUB Group Ltd	3728.47	32.03	0.16	N/A
CCP	Credit Corp Group	888.27	13.15	0.77	N/A
CGF	Challenger Limited	4888.17	7.12	0.71	N/A
EQT	Equity HI	841.60	31.89	1.40	N/A
FPR	Fleetpartners Group	629.04	2.86	2.14	N/A
GDG	Generation Dev Group	1667.02	4.32	0.23	N/A
HLI	Helia Group Limited	1291.43	5.01	5.70	N/A
HMC	HMC Capital Limited	2133.22	4.87	-5.80	HMC: Macquarie Conference Presentation
HUB	HUB24 Ltd	6111.50	78.29	3.98	N/A
IAG	Insurance Australia	19702.81	8.32	-0.12	N/A
IFL	Insignia Financial	2535.34	3.87	2.38	N/A
IFT	Infratil Limited	10000.33	10.61	2.71	N/A
MAF	MA Financial Group	1149.71	6.32	-0.32	N/A
MFG	Magellan Fin Grp Ltd	1339.08	7.93	3.12	Assets Under Management - April 2025
MPL	Medibank Private Ltd	12861.20	4.72	1.07	Medibank shares business update and healthcare insights
MQG	Macquarie Group Ltd	74081.87	195.88	0.78	N/A
NHF	NIB Holdings Limited	3345.81	6.86	-0.15	Company presentation and update on FY25 business performance
NWL	Netwealth Group	6809.09	28.34	1.94	N/A
OFX	OFX Group Ltd	261.10	1.13	0.45	N/A
PNI	Pinnacle Investment	4116.42	18.40	1.38	Presentation - Macquarie Australia Conference
PPT	Perpetual Limited	1884.22	16.43	-0.06	N/A
PTM	Platinum Asset	390.05	0.63	-6.72	Funds Under Management - 30 April 2025
QBE	QBE Insurance Group	32208.63	21.35	0.09	N/A
QRI	Qualitas Re Income	985.65	1.62	-0.31	N/A
SDF	Steadfast Group Ltd	6482.86	5.87	0.17	N/A
SOL	Soul Pattinson (W.H)	13558.58	36.94	0.19	N/A
SUN	Suncorp Group Ltd	21778.48	20.35	1.19	N/A
TYR	Tyro Payments	457.02	0.87	0.00	N/A
XYZ	Block Inc	3988.66	71.41	0.71	N/A
ZIP	ZIP Co Ltd..	2108.53	1.62	0.00	N/A

➤ **Property stocks:**

Code	Company Name	Market Cap (\$m)	Price (\$)	Daily Price Change (%)	Newsflash
ABG	Abacus Group	1076.86	1.19	-1.66	ABG MIT Qualification
ARF	Arena REIT.	1518.40	3.87	1.57	N/A
ASK	Abacus Storage King	1971.15	1.51	0.67	ASK MIT Qualification
BWP	BWP Trust	2597.18	3.66	0.55	N/A
CHC	Charter Hall Group	8305.83	18.05	2.79	N/A
CIP	Centuria I REIT	1930.19	3.08	1.32	N/A
CLW	Chtr H Lwr	2783.87	3.95	0.77	N/A
CMW	Cromwell Prop	1008.26	0.38	-1.30	N/A
CNI	Centuria Capital	1357.20	1.64	0.31	N/A
COF	Centuria Office REIT	746.67	1.26	0.40	N/A
CQE	Charter Hall Soc In	1094.77	3.02	2.37	N/A
CQR	Charter Hall Retail	2208.67	3.85	1.32	N/A
DGT	DigiCo Infrastr REIT	1565.01	2.85	0.00	N/A
DXI	Dexus Industria REIT	847.11	2.72	1.87	N/A
DXS	Dexus	8055.98	7.50	0.13	March 2025 Portfolio update
GMG	Goodman Group	62417.28	30.78	0.16	N/A
GOZ	Growthpoint Property	1779.68	2.39	1.27	N/A
GPT	GPT Group	8926.59	4.70	0.86	N/A
HCW	Hlthcohcwellsreit	467.65	0.86	0.59	HMC: Macquarie Conference Presentation
HDN	Homeco Daily Needs	2616.80	1.27	1.20	N/A
INA	Ingenia Group	2323.22	5.73	0.53	N/A
LIC	Lifestyle Communit.	952.01	7.70	-1.53	VCAT Proceeding Update
LLC	Lendlease Group	3540.69	5.17	0.78	N/A
MGR	Mirvac Group	8996.56	2.30	0.88	N/A
NSR	National Storage	3242.05	2.32	-0.43	N/A
PXA	Pexagroup	2122.31	11.79	-1.34	N/A
RFF	Rural Funds Group	699.55	1.81	0.84	N/A
RGN	Region Group	2709.44	2.35	0.86	N/A
SCG	Scentre Grp	18855.36	3.66	1.10	N/A
SGP	Stockland	13294.99	5.58	0.72	N/A
URW	Unibailrodawestfield	616.29	6.72	1.20	URW and Cenomi Centers sign strategic partnership in KSA
VCX	Vicinity Centres	10768.39	2.45	3.81	March 2025 quarterly update
WPR	Waypoint REIT	1753.91	2.63	0.77	N/A

➤ Tech stocks:

Code	Company Name	Market Cap (\$m)	Price (\$)	Daily Price Change (%)	Newsflash
360	Life360 Inc.	3943.31	22.70	1.34	N/A
AD8	Audinate Group Ltd	503.48	6.00	-0.66	N/A
BRN	Brainchip Ltd	455.79	0.22	-4.44	Annual General Meeting Chair and CEO Addresses
CAT	Catapult Grp Int Ltd	1096.55	4.10	1.49	N/A
CDA	Codan Limited	2937.82	16.27	0.56	N/A
DDR	Dicker Data Limited	1522.68	8.43	0.00	N/A
DTL	Data3 Limited	1154.07	7.55	1.34	N/A
GTK	Gentrack Group Ltd	1193.56	11.19	0.99	N/A
HSN	Hansen Technologies	1045.66	4.95	-3.51	N/A
IFM	Infomedia Ltd	469.24	1.24	0.00	N/A
IRE	IRESS Limited	1531.67	8.06	-1.71	N/A
MAQ	Macquarie Technology	1564.98	62.09	2.26	N/A
MP1	Megaport Limited	1810.04	11.27	0.09	N/A
NVX	Novonix Limited	276.68	0.43	-2.30	N/A
NXL	Nuix Limited	783.84	2.37	0.00	N/A
NXT	NEXTDC Limited	8107.67	13.71	8.29	Contract Utilisation and Forward Order Book Update
RUL	Rpmglobal Hldgs Ltd	610.49	2.81	2.18	N/A
SDR	Siteminder	1075.83	3.78	-1.31	Presentation - 27th Macquarie Australia Conference
TNE	Technology One	10105.87	31.34	1.52	N/A
WBT	Weebit Nano Ltd	369.01	1.69	-4.79	N/A
WTC	WiseTech Global Ltd	31511.45	92.09	-2.21	WiseTech Global at Macquarie Australia Conference
XRO	Xero Ltd	25843.10	166.25	-1.18	N/A

➤ Communication stocks:

Code	Company Name	Market Cap (\$m)	Price (\$)	Daily Price Change (%)	Newsflash
ABB	Aussie Broadband	1215.42	4.17	1.46	N/A
CAR	CAR Group Limited	12710.62	34.13	1.46	N/A
CNU	Chorus Limited	3262.83	7.52	0.00	N/A
DHG	Domain Holdings Aus	2709.81	4.26	-0.70	N/A
EVT	EVT Limited	2324.07	14.71	2.87	N/A
NEC	Nine Entertainment	2307.28	1.48	1.72	N/A
NWS	News Corp..	1681.21	49.76	-0.08	N/A
OML	Ooh!Media Limited	856.66	1.61	0.94	N/A
REA	REA Group	32166.58	246.22	1.13	N/A
SEK	Seek Limited	7468.25	20.98	0.24	N/A
SLC	Superloop Limited	1269.48	2.53	2.02	N/A
SPK	Spark New Zealand	3646.39	1.93	0.00	N/A
TLS	Telstra Group	51788.33	4.54	0.22	N/A
TPG	TPG Telecom Limited	9445.46	5.12	0.79	N/A
TUA	Tuas Limited	2629.44	5.60	-0.36	N/A

➤ Utility stocks:

Code	Company Name	Market Cap (\$m)	Price (\$)	Daily Price Change (%)	Newsflash
AGL	AGL Energy Limited.	7353.13	10.93	0.00	N/A
APA	APA Group	10853.34	8.36	0.48	APA Group Presentation - Macquarie Australia Conference
ORG	Origin Energy	18312.81	10.72	0.85	N/A

Disclaimer

This document was prepared by Deep Data Analytics. Deep Data Analytics and its related bodies corporate ("DDA"), its directors and/or employees charge a subscription for this report. Deep Data Analytics as principal, its directors and/or employees and their associates may hold securities in the companies mentioned in this report. Deep Data Analytics may seek to do business with any of the companies outlined in this report and should not be considered independent. This document contains Deep Data Analytics proprietary processed data and publicly available information. The information has not been verified or audited, and you are strongly advised to make your own independent assessment and investigation in respect of any matters contained in the document, including to seek independent professional advice. The document has been provided to you for your general information purposes only. It does not consider your particular investment objectives, financial situation or other specific needs. This report has been provided to you on the condition that it is purely general advice and not to be considered as personal advice at any level.

Deep Data Analytics or their respective directors, officers, employees or shareholders makes any representation or warranty, expressed or implied, and takes no responsibility, in respect of the accuracy, reliability, completeness or thoroughness of any of the information contained in this document. Each of those parties, to the maximum extent permitted by law, expressly disclaims, and as a recipient, you expressly release each of those parties from, all liabilities, including (without limitation) liability for negligence in respect of, any part of the information contained in the document. No such parties are under any obligation to update any information in this document or correct any inaccuracies or omissions that may exist or become apparent. Neither this document nor any additional information which may subsequently be provided to a recipient shall constitute or form part of any offer, solicitation, invitation, advice or recommendation to sell or acquire any securities or assets.

Deep Data Analytics provides this financial advice as an honest and reasonable opinion held at a point in time about an investment's risk profile and merit and the information is provided by the Deep Data Analytics in good faith. The views of the adviser(s) do not necessarily reflect the views of the AFS Licensee. Deep Data Analytics has no obligation to update the opinion unless Deep Data Analytics is currently contracted to provide such an updated opinion. Deep Data Analytics does not warrant the accuracy of any information it sources from others. All statements as to future matters are not guaranteed to be accurate and any statements as to past performance do not represent future performance. Assessment of risk can be subjective. Portfolios of equity investments need to be well diversified and the risk appropriate for the investor. Equity investments in listed or unlisted companies yet to achieve a profit or with an equity value less than \$50 million should collectively be a small component of a balanced portfolio, with smaller individual investment sizes than otherwise. Investors are responsible for their own investment decisions, unless a contract stipulates otherwise. Deep Data Analytics does not stand behind the capital value or performance of any investment. Subject to any terms implied by law and which cannot be excluded, Deep Data Analytics shall not be liable for any errors, omissions, defects or misrepresentations in the information (including by reasons of negligence, negligent misstatement or otherwise) or for any loss or damage (whether direct or indirect) suffered by persons who use or rely on the information. If any law prohibits the exclusion of such liability, Deep Data Analytics limits its liability to the re-supply of the Information, provided that such limitation is permitted by law and is fair and reasonable.

Copyright © Deep Data Analytics. All rights reserved. This material is proprietary to Deep Data Analytics and may not be disclosed to third parties. Any unauthorized use, duplication or disclosure of this document is prohibited. The content has been approved for distribution by Deep Data Analytics (ABN 67 159 532 213 AFS Representative No. 1282992) which is a corporate approved representative of BR Securities (ABN 92 168 734 530 and holder of AFSL No. 456663). Deep Data Analytics is the business name of ABN 67 159 532 213.