



INVESTMENT MOTTO: Every cycle offers risk and return. Investing is all about how you manage each cycle to get the best out of it.

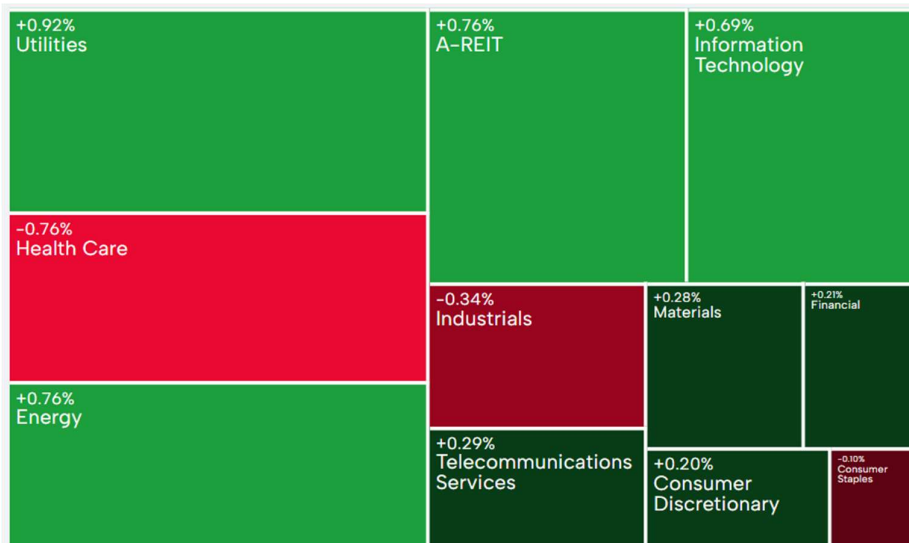
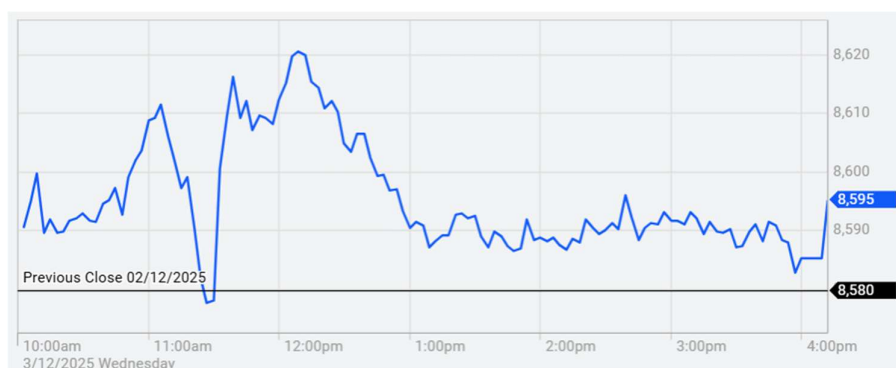
MARKET COMMENTARY

The Aussie market repeated the same cycle as yesterday. It started positively and faded through the day to deliver a slightly positive close with a pump at the close. There was a lot of volatility when the local GDP data was released as it had something for everyone except RBA. The growth was lower than expected but it was solid. There is too much of everything for RBA when they are currently trying not to use the words hike. The job market is as tight as the rising inflation. The interbank lending rates are expecting a hike in the next six months while RBA does not even want to use those words. White House is caught between war crime in bombing boats and failed one sided negotiations with Russia. Ukraine wasn't even involved and US was mainly playing Russian side for gifting purposes. Trump's son in law was part of negotiations because he is there for pure grift. White House has given up pretending that they have policies or even concepts. They are on full grift mode. Latest pardon was someone charged by Trump camp for trying to move 400 tonnes of cocaine. Only thing left is White House to announce a JV with a drug cartel to compete with pharmaceuticals. Japanese 30 and 40 year bond yields are flying to the highest level since the 90's. The Japanese carry trade is in the emergency ward. Something will snap soon and that will unwind. It may be different this time!

CNBC – China > China is closing out 2025 with far more confidence on the world stage than at the start of the year. It was the first major economy to retaliate against U.S. "Liberation Day" tariffs, and has increasingly played the rare earths card. Its tech companies overcame U.S. chip restrictions and released low-cost artificial intelligence models that rival far pricier offerings from the U.S., such as those from OpenAI. Global perceptions of China are improving. Whether the broader Chinese economy exudes the same level of confidence is less clear. The country's top leaders are expected to discuss policy plans for 2026 at the annual "Central Economic Work Conference" next week. While no dates have been officially released, the conference ran from Dec. 11 to 12 last year.

CNBC – Australia > Australia's third-quarter economic growth missed analysts' expectations, but clocked its fastest expansion in about two years, driven by strong investment and consumer demand. The country's GDP rose 2.1% year on year, marking its strongest expansion since the third quarter of 2023 when the economy grew at the same rate, data from the Australian Bureau of Statistics showed on Wednesday. Economists were expected GDP growth of 2.2%. On a quarter-on-quarter basis, Australia's GDP grew 0.4% compared with 0.7% forecast in a Reuters poll. "The miss isn't a sign of a materially weaker economy," said Harry Murphy Cruise, head of economic research and global trade at Oxford Economics, noting that excluding inventories and trade, the domestic economy surged 1.2% compared with the previous quarter — the fastest expansion in more than two years.

Historically, 75% of retail investors have experienced losses during positive market periods. Investors are now facing market cycles that are unprecedented in their lifetime, making risk management a crucial aspect of investing. Going forward, the trend towards active investing is reemerging as investors seek quality, relative value, profitability, and dividends. To navigate this new paradigm, it's important to have an active investment strategy that is flexible and adaptable to changing market conditions!



Security	Last	+/-	%	Security	Last	+/-	%	Security	Last	+/-	%
S&P 300	8554.50	16.20	0.19	DXY	99.1400	-0.1250	-0.13	SPTGLD	4220.18	14.38	0.34
S&P 200	8595.20	15.50	0.18	AUDUSD	0.6583	0.0018	0.27	TWI	61.30	0.00	0.00
Mid Cap	11752.60	-25.30	-0.21	NZDAUD	0.8739	0.0000	0.01	WTIS	58.70	0.06	0.10
Small Cap	3691.60	6.70	0.18	GBPAUD	2.0107	-0.0018	-0.09	BRENT	62.51	0.06	0.10
Micro Cap	2880.30	28.70	1.01	EURAUD	1.7685	-0.0021	-0.12	COPP3M	11285.00	-14.00	-0.12
NZ50G	13582.54	79.77	0.59	EURUSD	1.1643	0.0017	0.15	NICK3M	14725.00	30.00	0.20
JAPAN	50097.59	794.14	1.61	USDJPY	155.6860	-0.1740	-0.11	ZINC	3350.50	35.50	1.07
KOSPI	4047.86	52.93	1.32	CNYUSD	0.1415	0.0000	-0.01	Security	Last	+/-	%
SING	0.00	0.00	0.00	Security	Last	+/-	%	DOWFUT	47661.00	117.00	0.25
SHANGHAI	3895.76	-1.95	-0.05	USBON	4.0797	-0.0058	-0.14	NASFUT	25670.75	64.75	0.25
HNGKNG	25868.23	-226.82	-0.87	USLBR	4.7410	0.0090	0.19	SPFUT	6856.25	16.00	0.23
GERMAN	23710.86	0.00	0.00	BOND10	4.6450	0.0350	0.76				
CAC40	8074.61	-22.39	-0.28	BBSR3M	3.6671	-0.0022	-0.06				
FTSE	9701.80	-0.73	-0.01	VIX	16.59	-0.65	-3.77				
DOWJON	47474.46	185.13	0.39	XVI	10.99	-0.12	-1.10				
NASDAQ	23413.67	137.75	0.59								
SP500	6829.37	16.74	0.25								

Sources: AFR, AAP, ASX, Bloomberg, CNBC, CNN, FactSet, Hedgeye, IRESS, Market Watch, Reuters, S&P, Trading Economics

The RatingDog China General Services PMI declined to 52.1 in November 2025, down from 52.6 in October, but remained above market expectations of 52.0. The latest reading marked the softest expansion in the services sector since June, as new business growth eased. However, new export orders returned to growth amid easing trade uncertainty with the US. Meanwhile, employment continued to decline due to the non-replacement of departing staff and redundancies driven by cost concerns, with backlogs of work rising. Regarding prices, input costs continued to rise, driven by higher raw material prices, office supplies, and fuel costs. However, input price inflation eased slightly, though it remained among the highest levels recorded in just over a year. As a result, firms raised selling prices, albeit only marginally, as they sought to pass higher costs on to customers. Looking ahead, business sentiment weakened to one of the lowest on record.

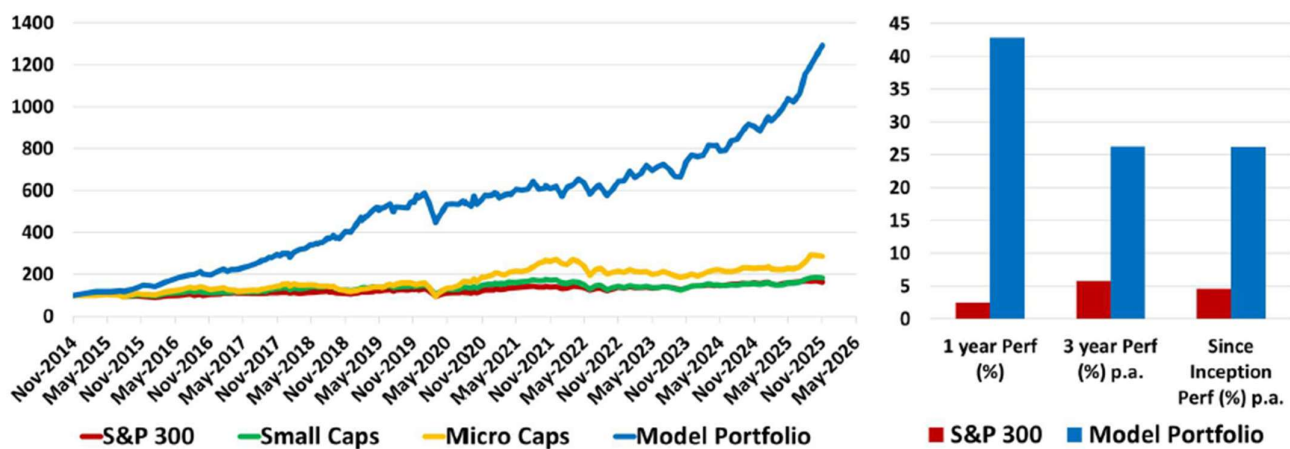
South Korea's economy grew 1.3% QoQ in the three months to September 2025, a touch above the earlier estimate of 1.2% and the strongest pace in nearly four years, supported by firm exports and resilient private consumption. Household spending rose 1.3% as outlays increased for both goods such as motor vehicles and communication equipment and services such as restaurants and health services. Government consumption also climbed 1.3%, driven by higher spending on goods and health care benefits. Construction investment increased 0.6%, led by gains in civil engineering, while facilities investment expanded 2.6% on stronger machinery purchases including semiconductor manufacturing equipment. Exports grew 2.1% on solid semiconductor and motor vehicle shipments, and imports rose 2.0% on higher inflows of machinery, equipment and vehicles. On an annual basis, the economy expanded 1.8% in Q3, slightly above the initial estimate of 1.7%.

The Australian economy expanded 0.4% qoq in Q3 2025, following an upwardly revised Q2 reading and market estimates of 0.7% while marking the 16th consecutive quarter of growth. Household consumption slowed sharply (0.5% vs 0.9% in Q2), as discretionary spending cooled after a strong Easter-related boost in the prior quarter. Meantime, government spending growth was little changed (0.8% vs 0.9%). Net trade was a drag, with exports (1.0% vs 2.3%) rising less than imports (1.5% vs 2.3%); while inventories subtracted 0.5ppts. In contrast, private investment surged (2.9% vs 0.2%), contributing 0.5ppts and marking its fastest pace since Q1 2021, driven by stronger machinery and equipment spending. Public investment also rebounded (3.0% -3.5%) on the back of renewable energy and water, telecommunications and rail transport projects. The household savings ratio increased (6.4% vs 6.0%). Annually, GDP grew 2.1%, slightly below forecasts of 2.2% and following a 2.0% rise in Q2.

The S&P Global Australia Services PMI Business Activity Index rose to 52.8 in November from 52.5 in October, indicating faster expansion in the service sector. The improvement reflected stronger new business inflows supported by better underlying demand, with new orders accelerating while employment increased at the softest pace in ten months as firms struggled to secure suitable candidates. Export demand for services strengthened markedly, producing the fastest expansion in new export business over three years. Business confidence was unchanged from October and remained below the survey average. On the cost side, input price inflation rose at a quicker rate due to higher energy, wage and material expenses, while selling price inflation picked up slightly but remained modest overall.

Deep Data Analytics provides the framework and support to make you a professional investor!

GARY (Growth At Reasonable Yield) investing can outperform even in an expensive market with risk management!



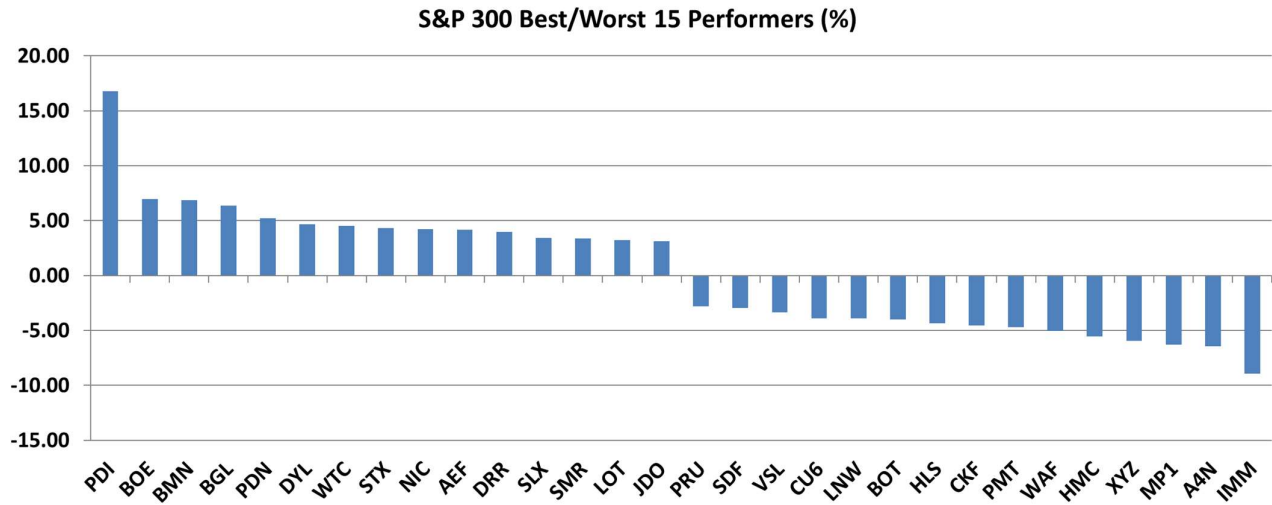
For more market and investment strategies,
visit...

www.deepdataanalytics.com.au

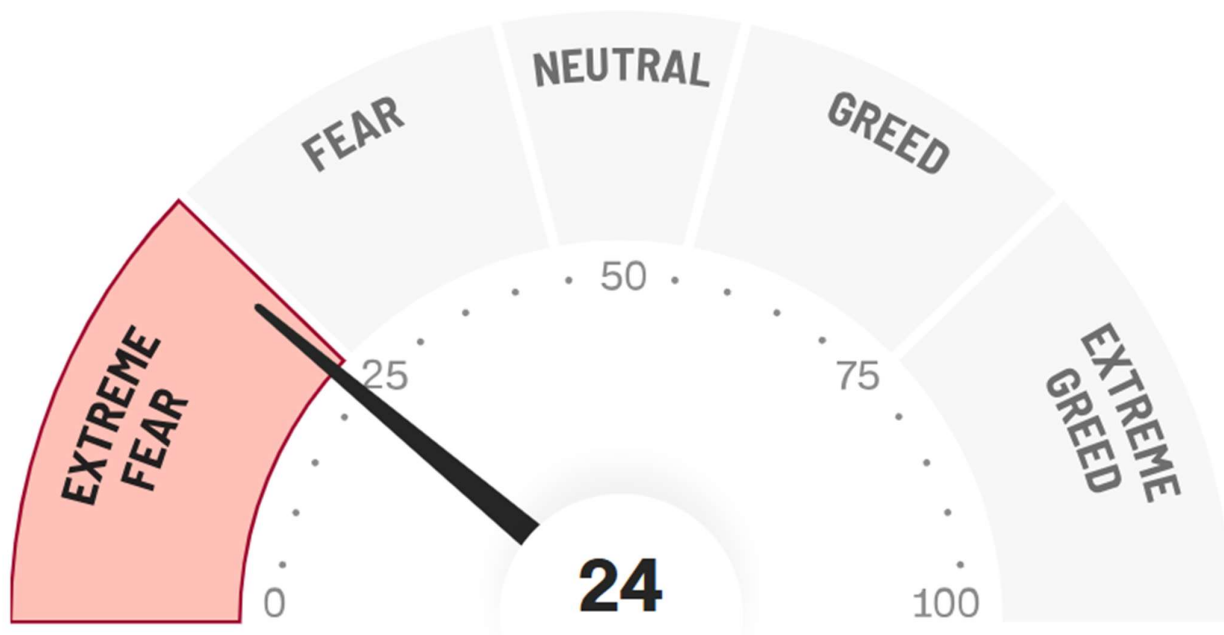
or email...

info@deepdataanalytics.com.au

1. Movers and Shakers in S&P 300 >



2. CNN Fear & Greed Index >



TODAY'S BEST 30 IN S&P 300

Code	Company Name	Market Cap (\$m)	Price (\$)	Daily Price Change (%)	Newsflash
PDI	Predictive Disc Ltd	1641.32	0.73	16.80	PRU: Superior Offer to acquire Predictive Discovery (PDI)
BOE	Boss Energy Ltd	655.58	1.69	6.96	N/A
BMN	Bannerman Energy Ltd	605.76	3.12	6.85	N/A
BGL	Bellevue Gold Ltd	1984.20	1.43	6.34	N/A
PDN	Paladin Energy Ltd	3621.59	8.48	5.21	N/A
DYL	Deep Yellow Limited	1561.89	1.68	4.67	N/A
WTC	WiseTech Global Ltd	23337.43	72.58	4.51	2025 Investor Day
STX	Strike Energy Ltd	413.93	0.12	4.35	N/A
NIC	Nickel Industries	3082.06	0.74	4.23	N/A
AEF	Australian Ethical	599.88	5.49	4.17	N/A
DRR	Deterra	2137.69	4.20	3.96	N/A
SLX	Silex Systems	2335.57	8.71	3.44	N/A
SMR	Stanmore Resources	2145.31	2.46	3.36	N/A
LOT	Lotus Resources Ltd	421.16	0.16	3.23	N/A
JDO	Judo Cap Holdings	1804.91	1.66	3.11	N/A
OCL	Objective Corp	1670.48	18.00	3.09	N/A
AGL	AGL Energy Limited.	6270.00	9.60	3.00	N/A
VEA	Viva Energy Group	3446.38	2.18	2.83	N/A
NCK	Nick Scali Limited	2012.54	24.19	2.80	N/A
BRN	Brainchip Ltd	402.43	0.19	2.78	N/A
MTS	Metcash Limited	3659.63	3.42	2.70	N/A
SLC	Superloop Limited	1379.43	2.75	2.61	N/A
KCN	Kingsgate Consolid.	1190.81	4.74	2.60	N/A
MIN	Mineral Resources.	9324.27	48.37	2.52	N/A
NXG	Nexgenenergycanada	2086.64	13.92	2.43	N/A
AOV	Amotiv	1199.30	9.17	2.34	N/A
CCP	Credit Corp Group	936.60	14.08	2.33	N/A
WHC	Whitehaven Coal	5913.13	7.28	2.25	N/A
JIN	Jumbo Interactive	681.83	11.00	2.23	N/A
MFG	Magellan Fin Grp Ltd	1616.48	9.71	2.21	N/A

TODAY'S WORST 30 IN S&P 300

Code	Company Name	Market Cap (\$m)	Price (\$)	Daily Price Change (%)	Newsflash
IMM	Immutep Ltd	412.14	0.26	-8.93	N/A
A4N	Alpha Hpa Ltd	881.67	0.73	-6.45	N/A
MP1	Megaport Limited	2434.79	12.98	-6.28	N/A
XYZ	Block Inc	3971.93	92.70	-5.96	N/A
HMC	HMC Capital Limited	1485.42	3.40	-5.56	N/A
WAF	West African Res Ltd	3388.96	2.82	-5.05	Ceasing to be a substantial holder
PMT	Pmet Resources	294.85	0.51	-4.67	N/A
CKF	Collins Foods Ltd	1321.82	10.69	-4.55	N/A
HLS	Healius	755.18	1.00	-4.33	Change in substantial holding
BOT	Botanix Pharma Ltd	246.33	0.12	-4.00	N/A
LNW	Light & Wonder Inc.	12298.92	147.26	-3.92	N/A
CU6	Clarity Pharma	1242.58	3.21	-3.89	N/A
VSL	Vulcan Steel	1055.02	6.96	-3.33	N/A
SDF	Steadfast Group Ltd	5660.04	4.94	-2.95	N/A
PRU	Perseus Mining Ltd	7729.04	5.56	-2.80	PRU: Superior Offer to acquire Predictive Discovery (PDI)
LYC	Lynas Rare Earths	15117.67	14.61	-2.73	N/A
IPH	IPH Limited	936.10	3.49	-2.51	N/A
EQT	Equity HI	675.94	24.62	-2.42	N/A
DRO	Droneshield Limited	1716.59	1.84	-2.39	N/A
RPL	Regal Partners Ltd	1108.20	2.93	-2.33	N/A
MSB	Mesoblast Limited	3310.06	2.52	-2.33	N/A
SUN	Suncorp Group Ltd	18713.68	16.88	-2.31	N/A
360	Life360 Inc.	6306.22	37.47	-2.19	N/A
QBE	QBE Insurance Group	29358.23	19.02	-2.16	N/A
PME	Pro Medicus Limited	27164.46	254.33	-2.15	N/A
SIQ	Smartgrp Corporation	1246.21	9.00	-2.07	N/A
DDR	Dicker Data Limited	1916.67	10.39	-1.98	N/A
NHF	NIB Holdings Limited	3493.75	7.02	-1.96	N/A
ARB	ARB Corporation.	2774.89	32.60	-1.95	N/A
SHL	Sonic Healthcare	11654.13	23.12	-1.95	N/A

CHECKING S&P 300 BY THE SECTOR

➤ Energy stocks:

Code	Company Name	Market Cap (\$m)	Price (\$)	Daily Price Change (%)	Newsflash
AEL	Amplitude Energy	810.39	2.71	-0.37	Becoming a substantial holder
ALD	Ampol Limited	7496.98	32.00	1.72	N/A
BMN	Bannerman Energy Ltd	605.76	3.12	6.85	N/A
BOE	Boss Energy Ltd	655.58	1.69	6.96	N/A
BPT	Beach Energy Limited	2714.79	1.17	-1.68	N/A
DYL	Deep Yellow Limited	1561.89	1.68	4.67	N/A
KAR	Karoo Energy Ltd	1177.71	1.60	-0.62	N/A
LOT	Lotus Resources Ltd	421.16	0.16	3.23	N/A
NHC	New Hope Corporation	3263.85	3.89	0.52	N/A
NXG	Nexgenenergycanada	2086.64	13.92	2.43	N/A
PDN	Paladin Energy Ltd	3621.59	8.48	5.21	N/A
STO	Santos Ltd	21175.48	6.55	0.46	N/A
STX	Strike Energy Ltd	413.93	0.12	4.35	N/A
VEA	Viva Energy Group	3446.38	2.18	2.83	N/A
WDS	Woodside Energy	48287.94	25.40	0.00	N/A
WHC	Whitehaven Coal	5913.13	7.28	2.25	N/A
YAL	Yancoal Aust Ltd	7328.44	5.67	2.16	N/A

➤ Material (Ex Mining) stocks:

Code	Company Name	Market Cap (\$m)	Price (\$)	Daily Price Change (%)	Newsflash
A4N	Alpha Hpa Ltd	881.67	0.73	-6.45	N/A
AMC	Amcort PLC	8913.61	12.73	-1.93	N/A
DNL	Dyno Nobel Ltd	5960.64	3.31	-0.30	N/A
JHX	James Hardie Indust	12739.09	29.54	-0.27	N/A
NUF	Nufarm Limited	921.42	2.39	-0.42	N/A
ORA	Orora Limited	2778.24	2.20	-1.35	N/A
ORI	Orica Limited	11258.94	24.03	-0.21	Change of Director's Interest Notice

➤ **Gold stocks:**

Code	Company Name	Market Cap (\$m)	Price (\$)	Daily Price Change (%)	Newsflash
ALK	Alkane Resources Ltd	1454.57	1.09	1.88	N/A
BC8	Black Cat Syndicate	762.01	1.06	0.48	N/A
BGL	Bellevue Gold Ltd	1984.20	1.43	6.34	N/A
CMM	Capricorn Metals	6421.68	14.19	0.64	N/A
CYL	Catalyst Metals	1722.63	6.58	-0.45	N/A
EMR	Emerald Res NL	3552.03	5.28	-1.86	N/A
EVN	Evolution Mining Ltd	23859.80	11.90	1.28	N/A
FFM	Firefly Metals Ltd	1327.76	1.95	0.00	N/A
GGP	Greatland Resources	5567.24	8.26	-0.48	N/A
GMD	Genesis Minerals	7482.25	6.59	0.61	N/A
KCN	Kingsgate Consolid.	1190.81	4.74	2.60	N/A
NEM	Newmont Corporation	13209.55	137.51	-0.90	N/A
NST	Northern Star	38787.23	27.09	-0.07	N/A
OBM	Ora Banda Mining Ltd	2405.35	1.28	1.99	N/A
PDI	Predictive Disc Ltd	1641.32	0.73	16.80	PRU: Superior Offer to acquire Predictive Discovery (PDI)
PNR	Pantoro Gold Limited	1872.36	4.85	2.11	N/A
PRU	Perseus Mining Ltd	7729.04	5.56	-2.80	PRU: Superior Offer to acquire Predictive Discovery (PDI)
RMS	Ramelius Resources	6948.76	3.66	1.39	N/A
RRL	Regis Resources	5550.66	7.37	0.55	N/A
RSG	Resolute Mining	2459.80	1.15	-0.87	N/A
SX2	Southgold Consol	1103.54	7.72	0.52	N/A
VAU	Vault Minerals Ltd	5294.79	5.08	0.20	N/A
WAF	West African Res Ltd	3388.96	2.82	-5.05	Ceasing to be a substantial holder
WGX	Westgold Resources.	5650.09	5.95	-0.50	N/A

➤ **Mining (Ex Gold) stocks:**

Code	Company Name	Market Cap (\$m)	Price (\$)	Daily Price Change (%)	Newsflash
AAI	Alcoa Corporation	3499.17	63.16	-0.22	N/A
BHP	BHP Group Limited	216158.54	42.96	0.94	N/A
BSL	BlueScope Steel Ltd	10513.48	23.91	-0.25	Change in substantial holding
CHN	Chalice Mining Ltd	661.48	1.71	0.29	N/A
CIA	Champion Iron Ltd	3103.52	5.85	0.52	N/A
CSC	Capstonecorp	2650.67	13.19	-1.86	N/A
DRR	Deterra	2137.69	4.20	3.96	N/A
DVP	Develop Global Ltd	1277.04	3.93	1.55	Change of Director's Interest Notice
FMG	Fortescue Ltd	67306.17	21.78	-0.37	N/A
IGO	IGO Limited	5020.69	6.71	1.21	N/A
ILU	Iluka Resources	2887.61	6.63	-1.34	N/A
IMD	Imdex Limited	1755.62	3.37	-1.75	N/A
IPX	Iperionx Limited	1678.22	4.92	-1.60	N/A
LTR	Liontown Resources	3939.13	1.34	0.00	Ceasing to be a substantial holder
LYC	Lynas Rare Earths	15117.67	14.61	-2.73	N/A
MIN	Mineral Resources.	9324.27	48.37	2.52	N/A
NIC	Nickel Industries	3082.06	0.74	4.23	N/A
PLS	Pilbara Min Ltd	12717.65	3.89	-1.52	N/A
PMT	Pmet Resources	294.85	0.51	-4.67	N/A
PRN	Perenti Limited	2725.65	2.92	0.69	N/A
RIO	Rio Tinto Limited	50125.33	135.28	0.19	N/A
S32	South32 Limited	15000.10	3.38	1.20	N/A
SFR	Sandfire Resources	7501.62	16.34	0.37	N/A
SGM	Sims Limited	3340.97	17.37	0.46	N/A
SMR	Stanmore Resources	2145.31	2.46	3.36	N/A
VSL	Vulcan Steel	1055.02	6.96	-3.33	N/A
VUL	Vulcan Energy	1437.05	6.13	0.00	Financing and FID presentation
WA1	Wa1ResourcesLtd	1210.99	16.39	0.49	N/A

➤ Industrial stocks:

Code	Company Name	Market Cap (\$m)	Price (\$)	Daily Price Change (%)	Newsflash
ASB	Austal Limited	2785.53	6.65	0.76	N/A
AIA	Auckland Internation	11933.71	6.97	-0.99	N/A
ALQ	ALS Ltd	11153.32	21.97	-0.09	N/A
ALX	Atlas Arteria	7152.61	4.95	0.41	N/A
AZJ	Aurizon Holdings Ltd	6301.60	3.59	-0.28	N/A
BXB	Brambles Limited	32316.43	23.48	-1.14	N/A
CPU	Computershare Ltd	20613.72	35.10	-1.52	N/A
CWY	Cleanaway Waste Ltd	6003.52	2.69	0.37	N/A
DBI	Dalrymple Bay	2245.80	4.50	-0.66	N/A
DOW	Downer EDI Limited	5265.92	7.94	0.25	N/A
DRO	Droneshield Limited	1716.59	1.84	-2.39	N/A
EOS	Electro Optic Sys.	858.64	4.46	0.22	N/A
FBU	Fletcher Building	3289.19	3.05	-0.33	N/A
GWA	GWA Group Ltd	660.36	2.48	-0.40	N/A
IPH	IPH Limited	936.10	3.49	-2.51	N/A
KLS	Kelsian Group Ltd	1222.18	4.44	-1.33	N/A
MGH	Maas Group Holdings	1640.72	4.56	1.11	N/A
MMS	McMillan Shakespeare	1187.41	17.05	0.00	N/A
MND	Monadelphous Group	2642.69	26.50	0.30	N/A
NWH	NRW Holdings Limited	2527.07	5.44	-1.09	N/A
QAN	Qantas Airways	14738.56	9.72	-0.21	N/A
QUB	Qube Holdings Ltd	8317.18	4.69	-0.21	N/A
RDX	Redox Limited	1506.98	2.87	0.00	N/A
REH	Reece Limited	7637.08	12.25	-0.89	N/A
RWC	Reliance Worldwide	3180.70	4.14	-0.24	N/A
SGH	SGH Limited	18713.78	45.89	-0.20	N/A
SIQ	Smartgrp Corporation	1246.21	9.00	-2.07	N/A
SLX	Silex Systems	2335.57	8.71	3.44	N/A
SRG	SRG Global Ltd	1810.85	2.88	-0.35	N/A
SSM	Service Stream	1403.78	2.30	1.32	N/A
TCL	Transurban Group	46564.51	15.02	0.47	N/A
VGN	Virgin Australia	2338.15	2.99	0.00	N/A
VNT	Ventiaservicesgroup	4901.98	5.83	-1.19	Becoming a substantial holder
WOR	Worley Limited	6701.96	13.21	0.38	N/A

➤ **Consumer stocks:**

Code	Company Name	Market Cap (\$m)	Price (\$)	Daily Price Change (%)	Newsflash
ADH	Adairs Limited	327.19	1.85	0.00	N/A
ALL	Aristocrat Leisure	35815.58	58.62	0.96	N/A
AOV	Amotiv	1199.30	9.17	2.34	N/A
APE	Eagers Automotive	7990.91	28.19	-0.39	N/A
ARB	ARB Corporation.	2774.89	32.60	-1.95	N/A
AX1	Accent Group Ltd	610.20	1.01	-0.49	N/A
BAP	Bapcor Limited	794.23	2.33	-0.43	N/A
BRG	Breville Group Ltd	4259.58	29.99	1.97	N/A
CKF	Collins Foods Ltd	1321.82	10.69	-4.55	N/A
CTD	Corp Travel Limited	2351.45	16.05	0.00	N/A
DMP	Domino Pizza Enterpr	2041.51	21.73	0.70	Change in substantial holding
FLT	Flight Centre Travel	2895.83	13.61	0.44	Becoming a substantial holder
GEM	G8 Education Limited	547.81	0.72	0.70	N/A
GYG	Guzman Y Gomez Ltd	2290.76	22.43	0.95	N/A
HVN	Harvey Norman	8896.49	7.24	1.40	N/A
IEL	Idp Education Ltd	1405.60	5.14	1.78	N/A
JBH	JB Hi-Fi Limited	10737.69	98.11	-0.10	N/A
JIN	Jumbo Interactive	681.83	11.00	2.23	N/A
LNW	Light & Wonder Inc.	12298.92	147.26	-3.92	N/A
LOV	Lovisa Holdings Ltd	3500.44	31.58	-0.09	N/A
MYR	Myer Holdings Ltd	744.22	0.44	1.16	N/A
NCK	Nick Scali Limited	2012.54	24.19	2.80	N/A
PFP	Propel Funeral	691.25	5.04	0.60	N/A
PMV	Premier Investments	2852.26	17.92	0.45	N/A
PWH	Pwr Holdings Limited	789.51	7.93	1.02	N/A
SNL	Supply Network	1461.82	33.50	0.27	N/A
SUL	Super Ret Rep Ltd	3732.91	16.51	-0.12	N/A
TAH	TABCORP Holdings Ltd	2106.08	0.92	0.00	Aware Super becoming a substantial shareholder
TLC	The Lottery Corp	12041.42	5.41	0.00	N/A
TPW	Temple & Webster Ltd	1700.69	14.35	1.49	N/A
UNI	Universal Store	655.96	8.55	0.00	N/A
WEB	WEB Travel Group Ltd	1745.28	4.78	-1.04	N/A
WES	Wesfarmers Limited	92626.52	81.72	0.10	N/A

➤ **Staple stocks:**

Code	Company Name	Market Cap (\$m)	Price (\$)	Daily Price Change (%)	Newsflash
A2M	The A2 Milk Company	6797.24	9.39	0.21	Share trades by Executive Leadership Team
BGA	Bega Cheese Ltd	1835.32	6.00	-0.17	N/A
CBO	Cobram Estate Olives	1456.10	3.05	0.00	Change of Director's Interest Notice
COL	Coles Group	30023.64	22.19	-0.80	N/A
EDV	Endeavour	6733.97	3.74	-0.27	N/A
ELD	Elders Limited	1528.74	7.28	1.68	N/A
GNC	GrainCorp Limited	1785.07	8.14	1.37	N/A
ING	Inghams Group	936.63	2.52	0.00	N/A
MTS	Metcash Limited	3659.63	3.42	2.70	N/A
RIC	Ridley Corporation	985.86	2.59	-1.52	N/A
SGLV	Sunrice	1090.44	15.95	-0.31	N/A
SHV	Select Harvests	679.27	4.87	1.88	N/A
TWE	Treasury Wine Estate	4683.14	5.76	-0.69	N/A
WOW	Woolworths Group Ltd	35902.75	29.42	0.10	N/A

➤ **Healthcare stocks:**

Code	Company Name	Market Cap (\$m)	Price (\$)	Daily Price Change (%)	Newsflash
ACL	Au Clinical Labs	554.50	2.80	-1.75	N/A
ANN	Ansell Limited	5242.15	36.40	0.14	Ansell Limited Investor Presentation
BOT	Botanix Pharma Ltd	246.33	0.12	-4.00	N/A
COH	Cochlear Limited	18029.70	274.25	-0.52	N/A
CSL	CSL Limited	88996.17	182.30	-0.62	N/A
CU6	Clarity Pharma	1242.58	3.21	-3.89	N/A
CUV	Clinuvel Pharmaceut.	597.89	12.16	2.10	N/A
EBO	Ebos Group Ltd	5086.54	24.46	-1.41	N/A
FPH	Fisher & Paykel H.	19514.74	33.02	-0.63	QUOTED: Ex Dividend
HLS	Healius	755.18	1.00	-4.33	Change in substantial holding
IDX	Integral Diagnostics	958.42	2.58	0.39	N/A
IMM	Immutep Ltd	412.14	0.26	-8.93	N/A
MSB	Mesoblast Limited	3310.06	2.52	-2.33	N/A
MYX	Mayne Pharma Ltd	277.05	3.36	-1.47	N/A
NAN	Nanosonics Limited	1271.41	4.24	1.44	N/A
NEU	Neuren Pharmaceut.	2416.28	19.13	0.26	N/A
PME	Pro Medicus Limited	27164.46	254.33	-2.15	N/A
PNV	Polynovo Limited	815.19	1.20	1.27	N/A
REG	Regis Healthcare Ltd	2394.70	7.95	0.38	Change of Director's Interest Notice
RHC	Ramsay Health Care	8672.28	37.37	-0.53	N/A
RMD	ResMed Inc.	21877.68	37.96	0.37	N/A
SHL	Sonic Healthcare	11654.13	23.12	-1.95	N/A
SIG	Sigma Health Ltd	32784.12	2.80	-1.41	N/A
TLX	Telix Pharmaceutical	4894.52	14.28	-1.18	N/A

➤ **Bank stocks:**

Code	Company Name	Market Cap (\$m)	Price (\$)	Daily Price Change (%)	Newsflash
ANZ	ANZ Group Holdings	102143.62	34.73	1.49	N/A
BEN	Bendigo and Adelaide	5742.38	10.08	-0.30	N/A
BOQ	Bank of Queensland.	4200.33	6.34	-0.16	N/A
CBA	Commonwealth Bank.	254767.91	152.05	-0.12	N/A
JDO	Judo Cap Holdings	1804.91	1.66	3.11	N/A
MYS	MyState Limited	746.62	4.32	-1.82	N/A
NAB	National Aust. Bank	123027.48	40.42	0.65	N/A
WBC	Westpac Banking Corp	126963.51	37.40	0.75	N/A

➤ **Diversified Financials / Insurance stocks:**

Code	Company Name	Market Cap (\$m)	Price (\$)	Daily Price Change (%)	Newsflash
AEF	Australian Ethical	599.88	5.49	4.17	N/A
AFG	Aust Finance Grp	627.77	2.31	0.00	N/A
AMP	AMP Limited	4341.93	1.71	-0.29	N/A
ASX	ASX Limited	11145.02	57.21	-0.26	N/A
AUB	AUB Group Ltd	3678.33	31.53	-0.06	N/A
CCP	Credit Corp Group	936.60	14.08	2.33	N/A
CGF	Challenger Limited	6162.70	8.94	0.34	N/A
EQT	Equity HI	675.94	24.62	-2.42	N/A
FPR	Fleetpartners Group	652.74	3.01	-0.33	N/A
GDG	Generation Dev Group	2465.80	6.11	-0.97	N/A
GQG	GQG Partners	5289.97	1.79	0.00	N/A
HLI	Helia Group Limited	1536.82	5.60	-0.71	N/A
HMC	HMC Capital Limited	1485.42	3.40	-5.56	N/A
HUB	HUB24 Ltd	8143.85	99.72	0.13	N/A
IAG	Insurance Australia	18236.34	7.65	-0.78	N/A
IFL	Insignia Financial	3038.39	4.57	0.88	N/A
IFT	Infratil Limited	10241.19	10.33	0.58	N/A
MAF	MA Financial Group	1901.91	9.90	1.43	Change in substantial holding
MFG	Magellan Fin Grp Ltd	1616.48	9.71	2.21	N/A
MPL	Medibank Private Ltd	12778.58	4.61	-0.65	N/A
MQG	Macquarie Group Ltd	73929.42	195.96	1.03	N/A
NHF	NIB Holdings Limited	3493.75	7.02	-1.96	N/A
NWL	Netwealth Group	6710.90	27.39	0.15	N/A
PNI	Pinnacle Investment	3836.73	16.77	-0.47	N/A
PPT	Perpetual Limited	2155.36	18.77	0.11	N/A
QBE	QBE Insurance Group	29358.23	19.02	-2.16	N/A
QRI	Qualitas Re Income	1006.49	1.59	-0.31	QUOTED: Ex Dividend
RPL	Regal Partners Ltd	1108.20	2.93	-2.33	N/A
SDF	Steadfast Group Ltd	5660.04	4.94	-2.95	N/A
SOL	Soul Pattinson (W.H)	14064.63	36.84	-0.49	N/A
SUN	Suncorp Group Ltd	18713.68	16.88	-2.31	N/A
TYR	Tyro Payments	546.38	1.03	0.00	N/A
XYZ	Block Inc	3971.93	92.70	-5.96	N/A
ZIP	ZIP Co Ltd..	3780.85	2.95	0.00	N/A

➤ **Property stocks:**

Code	Company Name	Market Cap (\$m)	Price (\$)	Daily Price Change (%)	Newsflash
ABG	Abacus Group	1103.67	1.26	1.62	N/A
APZ	Aspen Group	1181.58	5.24	0.96	N/A
ARF	Arena REIT.	1456.65	3.64	0.83	N/A
ASK	Abacus Storage King	1938.30	1.49	1.02	N/A
BWP	BWP Group	2774.37	3.88	1.31	N/A
CHC	Charter Hall Group	11612.08	24.83	1.14	N/A
CIP	Centuria I REIT	2164.71	3.46	0.00	N/A
CLW	Chtr H Lwr	2950.85	4.14	0.00	N/A
CMW	Cromwell Prop	1243.96	0.48	1.05	N/A
CNI	Centuria Capital	1817.90	2.15	-1.83	N/A
COF	Centuria Office REIT	701.87	1.17	-0.43	N/A
CQE	Charter Hall Soc In	1150.44	3.15	1.61	N/A
CQR	Charter Hall Retail	2377.23	4.10	0.24	N/A
DGT	DigiCo Infrastr REIT	1372.23	2.50	0.40	N/A
DXI	Dexus Industria REIT	885.18	2.79	0.00	N/A
DXS	Dexus	7926.92	7.36	-0.14	N/A
GMG	Goodman Group	61098.42	30.17	0.97	N/A
GOZ	Growthpoint Property	1938.56	2.60	1.17	N/A
GPT	GPT Group	10650.61	5.61	0.90	N/A
HDN	Homeco Daily Needs	2923.34	1.39	-1.07	N/A
INA	Ingenia Group	2070.52	5.09	0.20	N/A
LIC	Lifestyle Communit.	686.61	5.68	0.71	N/A
LLC	Lendlease Group	3577.56	5.17	-0.19	N/A
MGR	Mirvac Group	8167.93	2.07	0.00	N/A
NSR	National Storage	3805.00	2.70	-0.37	N/A
PXA	Pexagroup	2564.57	14.38	-0.42	N/A
RFF	Rural Funds Group	798.93	2.04	-0.49	N/A
RGN	Region Group	2798.57	2.43	0.83	N/A
SCG	Scentre Grp	21648.13	4.19	0.96	N/A
SGP	Stockland	14170.86	5.93	1.37	N/A
VCX	Vicinity Centres	11315.26	2.48	0.81	N/A
WPR	Waypoint REIT	1756.39	2.70	0.37	N/A

➤ Tech stocks:

Code	Company Name	Market Cap (\$m)	Price (\$)	Daily Price Change (%)	Newsflash
360	Life360 Inc.	6306.22	37.47	-2.19	N/A
AD8	Audinate Group Ltd	355.02	4.23	0.48	N/A
BRN	Brainchip Ltd	402.43	0.19	2.78	N/A
BVS	Bravura Solution Ltd	1129.72	2.55	1.19	N/A
CAT	Catapult Sports Ltd	1428.47	4.69	0.21	N/A
CDA	Codan Limited	5505.17	30.63	1.19	N/A
DDR	Dicker Data Limited	1916.67	10.39	-1.98	N/A
DTL	Data3 Limited	1436.02	9.31	0.54	N/A
GTK	Gentrack Group Ltd	966.20	9.01	0.90	Change in substantial holding
HSN	Hansen Technologies	1157.72	5.60	-1.23	N/A
IRE	IRESS Limited	1697.92	9.18	0.99	N/A
MAQ	Macquarie Technology	1676.84	64.60	-0.71	N/A
MP1	Megaport Limited	2434.79	12.98	-6.28	N/A
NXL	Nuix Limited	605.73	1.80	-0.55	N/A
NXT	NEXTDC Limited	8677.12	13.57	0.22	N/A
OCL	Objective Corp	1670.48	18.00	3.09	N/A
QOR	Qoria Limited	782.21	0.58	-0.86	N/A
RUL	Rpmglobal Hldgs Ltd	1092.03	4.91	-0.41	Change in substantial holding
SDR	Siteminder	1815.01	6.35	-1.55	N/A
TNE	Technology One	9424.94	29.30	1.77	N/A
WBT	Weebit Nano Ltd	775.71	3.78	2.16	N/A
WTC	WiseTech Global Ltd	23337.43	72.58	4.51	2025 Investor Day
XRO	Xero Ltd	20616.31	121.20	-0.20	N/A

➤ Communication stocks:

Code	Company Name	Market Cap (\$m)	Price (\$)	Daily Price Change (%)	Newsflash
ABB	Aussie Broadband	1527.25	5.13	-1.72	N/A
CAR	CAR Group Limited	12582.89	33.20	-0.15	N/A
CNU	Chorus Limited	3479.78	8.03	0.12	N/A
EVT	EVT Limited	2278.56	13.96	-0.43	N/A
NEC	Nine Entertainment	1760.20	1.11	-0.45	N/A
NWS	News Corp..	1954.49	43.92	-0.95	N/A
OML	Ooh!Media Limited	695.03	1.31	1.16	N/A
REA	REA Group	25169.65	190.13	-0.20	N/A
SEK	Seek Limited	8573.28	24.44	1.83	N/A
SLC	Superloop Limited	1379.43	2.75	2.61	N/A
SPK	Spark New Zealand	3799.12	2.02	0.50	N/A
TLS	Telstra Group	55321.14	4.91	0.20	N/A
TPG	TPG Telecom Limited	7323.01	3.77	0.00	N/A
TUA	Tuas Limited	3729.09	6.95	2.21	N/A

➤ Utility stocks:

Code	Company Name	Market Cap (\$m)	Price (\$)	Daily Price Change (%)	Newsflash
AGL	AGL Energy Limited.	6270.00	9.60	3.00	N/A
APA	APA Group	12073.36	9.29	1.20	N/A
ORG	Origin Energy	20156.15	11.72	0.17	N/A

Disclaimer

This document was prepared by Deep Data Analytics. Deep Data Analytics and its related bodies corporate ("DDA"), its directors and/or employees charge a subscription for this report. Deep Data Analytics as principal, its directors and/or employees and their associates may hold securities in the companies mentioned in this report. Deep Data Analytics may seek to do business with any of the companies outlined in this report and should not be considered independent. This document contains Deep Data Analytics proprietary processed data and publicly available information. The information has not been verified or audited, and you are strongly advised to make your own independent assessment and investigation in respect of any matters contained in the document, including to seek independent professional advice. The document has been provided to you for your general information purposes only. It does not consider your particular investment objectives, financial situation or other specific needs. This report has been provided to you on the condition that it is purely general advice and not to be considered as personal advice at any level.

Deep Data Analytics or their respective directors, officers, employees or shareholders makes any representation or warranty, expressed or implied, and takes no responsibility, in respect of the accuracy, reliability, completeness or thoroughness of any of the information contained in this document. Each of those parties, to the maximum extent permitted by law, expressly disclaims, and as a recipient, you expressly release each of those parties from, all liabilities, including (without limitation) liability for negligence in respect of, any part of the information contained in the document. No such parties are under any obligation to update any information in this document or correct any inaccuracies or omissions that may exist or become apparent. Neither this document nor any additional information which may subsequently be provided to a recipient shall constitute or form part of any offer, solicitation, invitation, advice or recommendation to sell or acquire any securities or assets.

Deep Data Analytics provides this financial advice as an honest and reasonable opinion held at a point in time about an investment's risk profile and merit and the information is provided by the Deep Data Analytics in good faith. The views of the adviser(s) do not necessarily reflect the views of the AFS Licensee. Deep Data Analytics has no obligation to update the opinion unless Deep Data Analytics is currently contracted to provide such an updated opinion. Deep Data Analytics does not warrant the accuracy of any information it sources from others. All statements as to future matters are not guaranteed to be accurate and any statements as to past performance do not represent future performance. Assessment of risk can be subjective. Portfolios of equity investments need to be well diversified and the risk appropriate for the investor. Equity investments in listed or unlisted companies yet to achieve a profit or with an equity value less than \$50 million should collectively be a small component of a balanced portfolio, with smaller individual investment sizes than otherwise. Investors are responsible for their own investment decisions, unless a contract stipulates otherwise. Deep Data Analytics does not stand behind the capital value or performance of any investment. Subject to any terms implied by law and which cannot be excluded, Deep Data Analytics shall not be liable for any errors, omissions, defects or misrepresentations in the information (including by reasons of negligence, negligent misstatement or otherwise) or for any loss or damage (whether direct or indirect) suffered by persons who use or rely on the information. If any law prohibits the exclusion of such liability, Deep Data Analytics limits its liability to the re-supply of the Information, provided that such limitation is permitted by law and is fair and reasonable.

Copyright © Deep Data Analytics. All rights reserved. This material is proprietary to Deep Data Analytics and may not be disclosed to third parties. Any unauthorized use, duplication or disclosure of this document is prohibited. The content has been approved for distribution by Deep Data Analytics (ABN 67 159 532 213 AFS Representative No. 1282992) which is a corporate approved representative of BR Securities (ABN 92 168 734 530 and holder of AFSL No. 456663). Deep Data Analytics is the business name of ABN 67 159 532 213.