



*INVESTMENT MOTTO: Every cycle offers risk and return. Investing is all about how you manage each cycle to get the best out of it.*

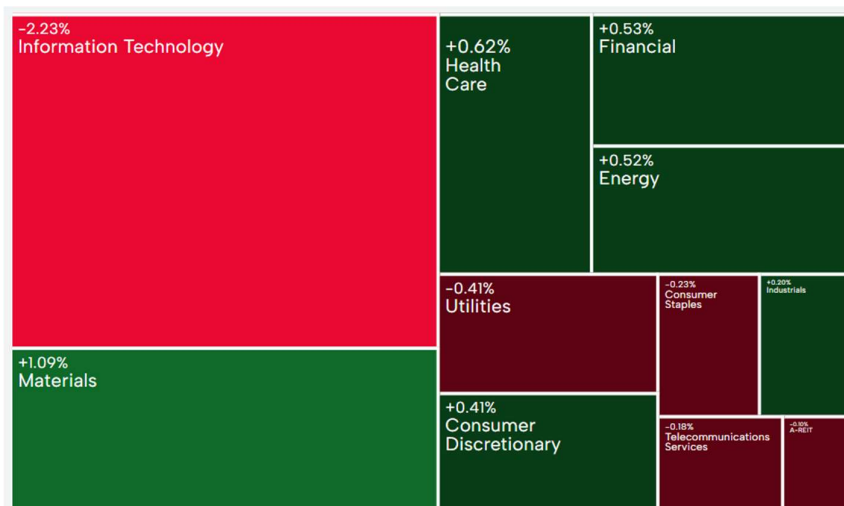
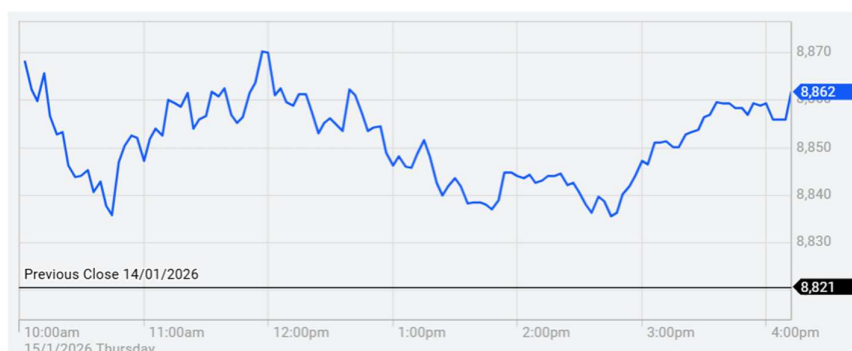
## MARKET COMMENTARY

The Aussie market had a positive day with large caps positive while mid and small caps were negative. It was clearly due to global flow that it wanted a positive market while local fund managers and retail investors were selling out. The on again off again US attack on Iran was on again in the morning but off again soon after. An attack on Iran is unlikely to be simple and quick like what US wants. It only works when they play cosplay like the organized bombing of the empty nuclear site. Epstein files need distraction and that has the economy falling. That means they need bigger distraction an attack on Iran or Greenland should buy time. EU forces are landing in Greenland while Chinese planes are landing in Iran. Things you have to do to keep Epstein files from the public. Iranian people fighting a strong man regime has been left behind by a grifting one. Anything could happen in the next few weeks, but the economy is sliding. It may be different this time!

CNBC – Iran > Iran reopened its airspace early Thursday after a temporary closure that barred most incoming and outgoing flights for several hours amid concerns the U.S. could carry out military strikes, raising risks for airlines. The restriction, which ended at 3:30 a.m. UTC, or 10:30 p.m. EST Wednesday, was in place for 5 hours. Live data from flight tracker FlightRadar24 showed most aircraft still skirting Iranian airspace as of 4 a.m. UTC, though some domestic carriers had begun resuming flights. The initial order exempted international flights to and from Tehran, provided they received prior approval from Iran’s civil aviation authority. The airspace closure comes as tensions escalated after U.S. President Donald Trump threatened intervention following a deadly crackdown on anti-government protests in Iran. Trump has publicly said he would “come to the rescue” of Iranian protestors if the violent crackdown continued. The U.S. has begun relocating some personnel and equipment from American military bases in the Middle East amid Iranian threats to strike those locations if Washington launches an attack. Trump later appeared to soften his tone. Speaking at the White House on Wednesday night, Trump said he has been assured that the killings of protestors in Iran had stopped and that he would “watch it and see” regarding potential U.S. military action.

CNBC – China > Any U.S. attempt to seize Greenland by force would trigger “monumental consequences” for the Western alliance and the global order, Iceland’s former President Olafur Ragnar Grimsson said, as President Donald Trump sharpens rhetoric on controlling the Arctic territory. Grimsson warned on CNBC’s “Access Middle East” that “the fallout would be on a scale that we have never seen in living memory.” Grimsson, the longest-serving president of Iceland from 1996 to 2016, currently serves as the Chairman of the Arctic Circle, the world’s largest annual gathering on Arctic issues. Trump has framed Greenland — an autonomous region within the Kingdom of Denmark — as central to U.S. national security, saying China and Russia were building up their influence in the strategically located minerals-rich area around the island.

Historically, 75% of retail investors have experienced losses during positive market periods. Investors are now facing market cycles that are unprecedented in their lifetime, making risk management a crucial aspect of investing. Going forward, the trend towards active investing is reemerging as investors seek quality, relative value, profitability, and dividends. To navigate this new paradigm, it's important to have an active investment strategy that is flexible and adaptable to changing market conditions!



Security	Last	+/-	%	Security	Last	+/-	%	Security	Last	+/-	%
S&P 300	8828.60	37.40	0.43	DX	98.9500	0.0900	0.09	SPTGLD	4608.68	-17.77	-0.38
S&P 200	8861.70	41.10	0.47	AUDUSD	0.6684	0.0002	0.03	TWI	62.20	-0.30	-0.48
Mid Cap	12022.20	-57.90	-0.48	NZDAUD	0.8588	-0.0014	-0.17	WTIS	60.13	-1.89	-3.05
Small Cap	3921.40	-17.20	-0.44	GBPAUD	2.0095	-0.0024	-0.12	BRENT	64.47	-2.05	-3.08
Micro Cap	3336.40	-17.50	-0.52	EURAUD	1.7407	-0.0019	-0.11	COPP3M	13335.00	25.00	0.19
NZ50G	13659.79	-97.92	-0.71	EURUSD	1.1635	-0.0009	-0.08	NICK3M	18000.00	380.00	2.16
JAPAN	53836.45	-504.78	-0.93	USDJPY	158.5260	0.0675	0.04	ZINC	3237.50	-22.00	-0.68
KOSPI	4795.21	72.11	1.53	CNYUSD	0.1435	0.0001	0.04	Security	Last	+/-	%
SING	0.00	0.00	0.00	Security	Last	+/-	%	DOWFUT	49337.00	-19.00	-0.04
SHANGHAI	4105.06	-21.03	-0.51	USBON	4.1458	-0.0211	-0.51	NASFUT	25708.25	77.25	0.30
HNGKNG	26849.69	-150.12	-0.56	USLBR	4.7900	-0.0360	-0.75	SPFUT	6975.50	9.25	0.13
GERMAN	25286.24	0.00	0.00	BOND10	4.6680	-0.0330	-0.70				
CAC40	8330.97	0.00	0.00	BBSR3M	3.7358	-0.0057	-0.15				
FTSE	10184.35	47.00	0.46	VIX	16.75	0.77	4.82				
DOWJON	49149.63	-42.36	-0.09	XVI	10.05	-0.13	-1.23				
NASDAQ	23471.75	-238.12	-1.00								
SP500	6926.60	-37.14	-0.53								

Sources: AFR, AAP, ASX, Bloomberg, CNBC, CNN, FactSet, Hedgeye, IRESS, Market Watch, Reuters, S&P, Trading Economics

US producer prices rose 0.2% month over month in November 2025, accelerating from a 0.1% increase in October and matching market expectations, according to delayed data from the Bureau of Labor Statistics. Goods prices jumped 0.9%, the largest monthly gain since February 2024, led by a 4.6% surge in energy costs. Excluding food and energy, prices for final demand goods advanced 0.2%, while final demand food prices were unchanged. Service prices were also flat, following a 0.3% rise in October. Meanwhile, core PPI, which excludes food and energy, was unchanged on the month, slowing sharply from a 0.3% rise in October and undershooting the consensus forecast of a 0.2% increase. On an annual basis, headline producer inflation climbed to 3.0% from 2.8%, surpassing expectations of 2.7%. Core producer inflation also edged higher to 3.0% from 2.9%, likewise coming in above forecasts of 2.7%.

US retail sales rose 0.6% mom in November 2025, the largest gain since July, rebounding from a revised 0.1% decline in October and exceeding forecasts of a 0.4% increase. The rise was driven by a rebound in auto sales, following a slowdown caused by the expiration of federal tax incentives on electric vehicles, and by strong holiday shopping. Biggest increases were seen in sales for sporting goods, musical instrument, & book stores (1.9%); miscellaneous store retailers (1.7%); gasoline stations (1.4%); building and garden suppliers (1.3%); motor vehicle dealers (1%); clothing stores (0.9%); food services & drinking places (0.6%); nonstore retailers (0.4%); health & personal care (0.3%); and food & beverage stores (0.1%). On the other hand, sales were flat at general merchandise and electronics stores and fell 0.1% at furniture stores.

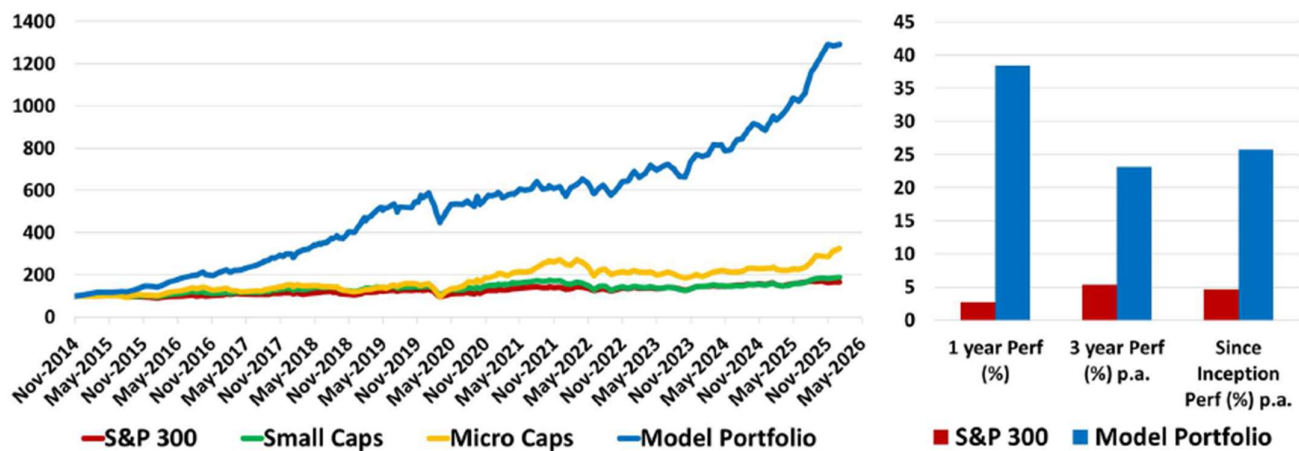
Japan's producer prices rose 2.4% year-on-year in December 2025, easing from a 2.7% increase in the previous month and in line with market expectations. This marked the slowest annual rise since May 2024. Cost moderated for: transport equipment (1.4% vs 1.5% in November), drinks and foods (5.0% vs 5.1%), general-purpose machinery (2.8% vs 3.0%), other manufacturing (2.3% vs 2.4%), production machinery (3.5% vs 4.0%), and plastics (0.4% vs 0.5%). In addition, prices remained weak for chemicals (-3.2% vs -3.5%), iron and steel (-6.7% vs -6.9%), and petroleum and coal products (-8.6% vs -2.5%). In contrast, inflation accelerated for non-ferrous metals (22.1% vs 14.9%), electrical machinery (2.5% vs 2.4%), metal products (0.3% vs 0.1%), information and communications (1.8% vs 1.6%), and business-oriented machinery (2.4% vs 0.9%). On a monthly basis, producer inflation slowed to 0.1% from 0.3% in November, matching forecasts and registering the softest pace in four months.

The Bank of Korea unanimously kept its base rate unchanged at 2.5% for a fifth consecutive meeting in its first policy decision of 2026, in line with market expectations. The move reinforced signals that the current easing cycle has likely reached an end following a cumulative 100bps since October 2024, as policymakers shifted their focus toward financial stability with the won hovering near 16-year lows. In its latest statement, the BoK removed language on considering further cuts, underscoring caution amid geopolitical risks, capital outflow pressures, and uncertainty over U.S. Federal Reserve policy. Concerns over high household debt levels and exchange-rate volatility also weighed on the latest decision. On the macro outlook, policymakers left inflation forecasts unchanged, projecting headline CPI at 2.1% and core at 2.0% this year, both near target. It also maintained its 2026 GDP growth forecast at 1.8%, pointing to a steady but modest recovery.

Australia's consumer inflation expectations stood at 4.6% in January 2026, little changed from 4.7% in the previous month, signaling households still foresee elevated price pressures. The latest reading followed the Reserve Bank of Australia's decision to leave the cash rate unchanged at 3.6% for a third straight meeting in December. During the gathering, policymakers noted inflation has eased sharply from its 2022 peak, though recent data show renewed momentum. Headline CPI slowed to 3.4% yoy in November, the lowest since August, but remained above the RBA's 2–3% target. Trimmed mean CPI also moderated to 3.2% from October's eight-month high of 3.3%. Governor Michele Bullock recently highlighted that September-quarter inflation was slightly stronger than expected, with temporary factors at play but signs of persistence across components. The board judged risks to inflation have tilted modestly upward, while downside risks, particularly from overseas, have eased.

# Deep Data Analytics provides the framework and support to make you a professional investor!

GARY (Growth At Reasonable Yield) investing can outperform even in an expensive market with risk management!



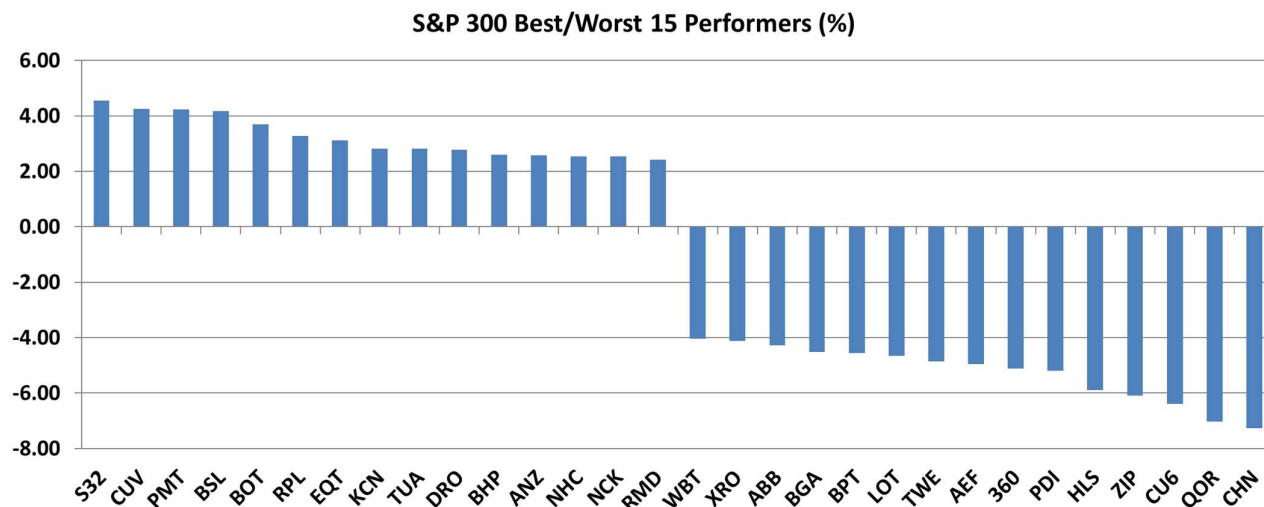
For more market and investment strategies,  
visit...

[www.deepdataanalytics.com.au](http://www.deepdataanalytics.com.au)

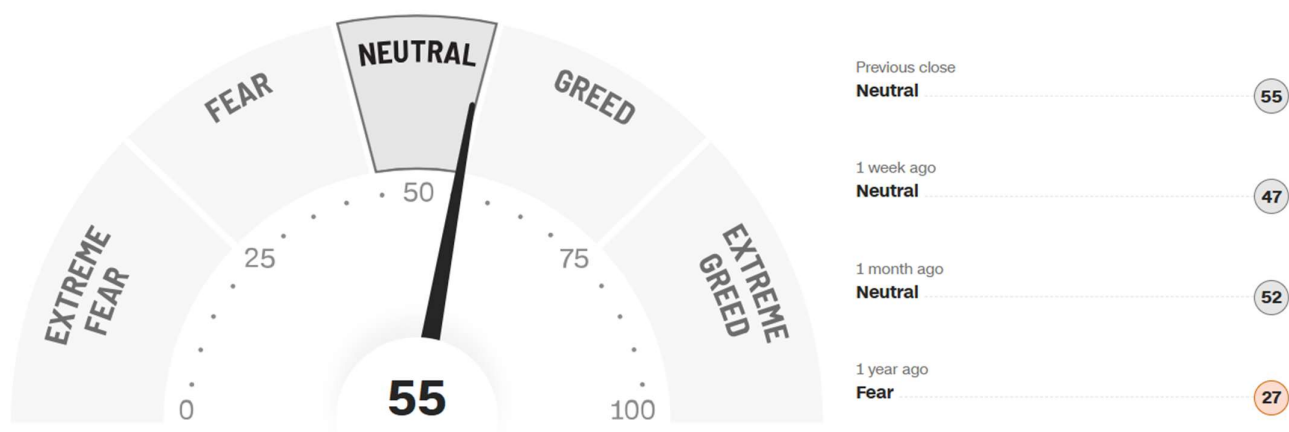
or email...

[info@deepdataanalytics.com.au](mailto:info@deepdataanalytics.com.au)

## 1. Movers and Shakers in S&P 300 >



## 2. CNN Fear & Greed Index >



# TODAY'S BEST 30 IN S&P 300

Code	Company Name	Market Cap (\$m)	Price (\$)	Daily Price Change (%)	Newsflash
S32	South32 Limited	17766.48	4.14	4.55	N/A
CUV	Clinuvel Pharmaceut.	613.96	12.75	4.25	Managing Director Letter to Shareholders
PMT	Pmet Resources	386.97	0.74	4.23	N/A
BSL	BlueScope Steel Ltd	13037.18	31.00	4.17	N/A
BOT	Botanix Pharma Ltd	265.72	0.14	3.70	N/A
RPL	Regal Partners Ltd	1241.18	3.47	3.27	N/A
EQT	Equity HI	663.35	25.53	3.11	N/A
KCN	Kingsgate Consolid.	1608.77	6.19	2.82	N/A
TUA	Tuas Limited	3899.10	7.31	2.81	N/A
DRO	Droneshield Limited	3628.25	4.08	2.77	Becoming a substantial holder
BHP	BHP Group Limited	244397.30	49.37	2.60	Rio Tinto, BHP Join Forces on Australian Iron Ore Development
ANZ	ANZ Group Holdings	109656.55	37.32	2.58	N/A
NHC	New Hope Corporation	3651.80	4.44	2.54	N/A
NCK	Nick Scali Limited	2121.16	25.43	2.54	N/A
RMD	ResMed Inc.	22036.46	38.95	2.42	N/A
BAP	Bapcor Limited	716.16	2.16	2.37	N/A
CYL	Catalyst Metals	1998.87	7.85	2.35	Quarterly Activities Report - December 2025
SRG	SRG Global Ltd	1898.57	3.10	2.31	N/A
CQR	Charter Hall Retail	2324.92	4.09	2.25	N/A
NIC	Nickel Industries	3971.96	0.94	2.19	N/A
AMC	Arcor PLC	9053.29	66.27	2.17	N/A
NXG	Nexgenenergycanada	2539.53	17.06	2.16	N/A
ILU	Iluka Resources	2866.13	6.81	2.10	N/A
WHC	Whitehaven Coal	7096.15	8.77	2.10	N/A
WA1	Wa1ResourcesLtd	1367.25	18.78	2.01	N/A
ALQ	ALS Ltd	11658.25	23.42	1.96	N/A
MND	Monadelphous Group	2905.76	29.61	1.93	N/A
ALD	Ampol Limited	6920.29	29.59	1.89	N/A
SLX	Silex Systems	1826.31	6.69	1.83	N/A
CPU	Computershare Ltd	20023.76	35.25	1.82	N/A

# TODAY'S WORST 30 IN S&P 300

Code	Company Name	Market Cap (\$m)	Price (\$)	Daily Price Change (%)	Newsflash
CHN	Chalice Mining Ltd	965.96	2.30	-7.26	N/A
QOR	Qoria Limited	771.91	0.53	-7.02	N/A
CU6	Clarity Pharma	1339.31	3.37	-6.39	SECuRE trial to continue with no modifications to protocol
ZIP	ZIP Co Ltd..	4167.84	3.08	-6.10	N/A
HLS	Healius	740.66	0.96	-5.88	N/A
PDI	Predictive Disc Ltd	2271.75	0.82	-5.20	N/A
360	Life360 Inc.	5444.05	28.75	-5.12	N/A
AEF	Australian Ethical	597.61	4.99	-4.95	N/A
TWE	Treasury Wine Estate	4327.86	5.10	-4.85	N/A
LOT	Lotus Resources Ltd	584.23	0.21	-4.65	N/A
BPT	Beach Energy Limited	2749.01	1.15	-4.56	N/A
BGA	Bega Cheese Ltd	1893.34	5.92	-4.52	N/A
ABB	Aussie Broadband	1436.55	4.70	-4.28	N/A
XRO	Xero Ltd	18280.82	103.16	-4.12	N/A
WBT	Weebit Nano Ltd	1043.86	4.76	-4.03	N/A
SMR	Stanmore Resources	2740.23	2.92	-3.95	N/A
MP1	Megaport Limited	2205.09	11.93	-3.95	N/A
VCX	Vicinity Centres	11959.22	2.50	-3.85	N/A
NEU	Neuren Pharmaceut.	2592.31	19.71	-3.71	N/A
OML	Ooh!Media Limited	743.52	1.33	-3.62	N/A
AD8	Audinate Group Ltd	377.79	4.32	-3.57	N/A
BGL	Bellevue Gold Ltd	2487.66	1.62	-3.57	N/A
IDX	Integral Diagnostics	988.26	2.56	-3.40	N/A
CAT	Catapult Sports Ltd	1268.33	3.99	-3.39	N/A
VUL	Vulcan Energy	2188.65	4.43	-3.28	N/A
PNI	Pinnacle Investment	4070.06	17.27	-3.09	N/A
XYZ	Block Inc	3895.15	97.64	-3.04	N/A
WGX	Westgold Resources.	6377.61	6.55	-2.96	N/A
GMD	Genesis Minerals	8613.15	7.32	-2.92	N/A
REG	Regis Healthcare Ltd	2125.60	6.83	-2.84	N/A

# CHECKING S&P 300 BY THE SECTOR

## ➤ Energy stocks:

Code	Company Name	Market Cap (\$m)	Price (\$)	Daily Price Change (%)	Newsflash
AEL	Amplitude Energy	875.65	2.90	-0.68	N/A
ALD	Ampol Limited	6920.29	29.59	1.89	N/A
BMN	Bannerman Energy Ltd	749.64	3.59	-0.55	N/A
BOE	Boss Energy Ltd	647.59	1.58	0.96	N/A
BPT	Beach Energy Limited	2749.01	1.15	-4.56	N/A
DYL	Deep Yellow Limited	1977.53	2.00	-1.48	N/A
KAR	Karoo Energy Ltd	1205.58	1.64	-2.10	N/A
LOT	Lotus Resources Ltd	584.23	0.21	-4.65	N/A
NHC	New Hope Corporation	3651.80	4.44	2.54	N/A
NXG	Nexgenenergycanada	2539.53	17.06	2.16	N/A
PDN	Paladin Energy Ltd	4789.84	10.67	0.09	N/A
STO	Santos Ltd	20493.45	6.33	0.32	N/A
STX	Strike Energy Ltd	413.93	0.12	0.00	N/A
VEA	Viva Energy Group	3226.92	2.02	1.76	N/A
WDS	Woodside Energy	45474.32	24.02	0.42	N/A
WHC	Whitehaven Coal	7096.15	8.77	2.10	N/A
YAL	Yancoal Aust Ltd	7209.60	5.39	-1.28	N/A

## ➤ Material (Ex Mining) stocks:

Code	Company Name	Market Cap (\$m)	Price (\$)	Daily Price Change (%)	Newsflash
A4N	Alpha Hpa Ltd	1015.74	0.87	-2.25	N/A
AMC	Amcor PLC	9053.29	66.27	2.17	N/A
DNL	Dyno Nobel Ltd	6160.33	3.43	-0.58	N/A
JHX	James Hardie Indust	14850.04	34.99	1.42	N/A
NUF	Nufarm Limited	891.24	2.34	0.86	N/A
ORA	Orora Limited	2763.68	2.23	-0.45	N/A
ORI	Orica Limited	12321.91	25.95	-1.70	N/A



➤ **Gold stocks:**

Code	Company Name	Market Cap (\$m)	Price (\$)	Daily Price Change (%)	Newsflash
ALK	Alkane Resources Ltd	2110.79	1.52	-1.62	N/A
BC8	Black Cat Syndicate	1069.74	1.47	-0.34	N/A
BGL	Bellevue Gold Ltd	2487.66	1.62	-3.57	N/A
CMM	Capricorn Metals	6755.85	14.62	-1.28	N/A
CYL	Catalyst Metals	1998.87	7.85	2.35	Quarterly Activities Report - December 2025
EMR	Emerald Res NL	4392.72	6.75	1.50	N/A
EVN	Evolution Mining Ltd	26926.04	13.07	-1.43	N/A
FFM	Firefly Metals Ltd	1525.47	1.99	0.25	Becoming a substantial holder
GGP	Greatland Resources	8471.89	12.60	0.08	N/A
GMD	Genesis Minerals	8613.15	7.32	-2.92	N/A
KCN	Kingsgate Consolid.	1608.77	6.19	2.82	N/A
NEM	Newmont Corporation	15450.82	168.11	-1.65	N/A
NST	Northern Star	38243.55	27.11	1.42	N/A
OBM	Ora Banda Mining Ltd	3084.59	1.60	-0.62	High-grade Results at Golden Pole
PDI	Predictive Disc Ltd	2271.75	0.82	-5.20	N/A
PNR	Pantoro Gold Limited	2085.22	5.29	0.00	N/A
PRU	Perseus Mining Ltd	8053.33	5.91	-0.84	N/A
RMS	Ramelius Resources	8681.47	4.49	-0.44	N/A
RRL	Regis Resources	5876.28	7.67	-1.16	N/A
RSG	Resolute Mining	2800.02	1.32	0.38	N/A
SX2	Southgold Consol	1479.52	10.63	-0.93	SX2 FY26 Second Quarter Financials and Management Analysis
VAU	Vault Minerals Ltd	6113.84	5.90	0.68	N/A
WAF	West African Res Ltd	3929.61	3.42	-0.58	N/A
WGX	Westgold Resources.	6377.61	6.55	-2.96	N/A

➤ **Mining (Ex Gold) stocks:**

Code	Company Name	Market Cap (\$m)	Price (\$)	Daily Price Change (%)	Newsflash
AAI	Alcoa Corporation	5112.55	95.90	-1.69	N/A
BHP	BHP Group Limited	244397.30	49.37	2.60	Rio Tinto, BHP Join Forces on Australian Iron Ore Development
BSL	BlueScope Steel Ltd	13037.18	31.00	4.17	N/A
CHN	Chalice Mining Ltd	965.96	2.30	-7.26	N/A
CIA	Champion Iron Ltd	3466.13	6.53	0.46	N/A
CSC	Capstonecorp	3057.15	14.60	-2.08	N/A
DRR	Deterra	2354.64	4.45	0.00	N/A
DVP	Devellop Global Ltd	1709.32	5.18	0.00	N/A
FMG	Fortescue Ltd	69738.56	22.75	0.44	N/A
IGO	IGO Limited	6906.28	9.16	0.44	N/A
ILU	Iluka Resources	2866.13	6.81	2.10	N/A
IMD	Imdex Limited	1991.06	3.83	-1.54	N/A
IPX	Iperionx Limited	2408.07	6.99	-2.37	N/A
LTR	Liontown Resources	6408.44	2.19	0.46	N/A
LYC	Lynas Rare Earths	15661.18	15.43	-0.84	N/A
MIN	Mineral Resources.	12122.74	61.25	-0.15	N/A
NIC	Nickel Industries	3971.96	0.94	2.19	N/A
PLS	Pilbara Min Ltd	15685.56	4.83	-0.82	N/A
PMT	Pmet Resources	386.97	0.74	4.23	N/A
PRN	Perenti Limited	2847.84	3.00	-0.99	N/A
RIO	Rio Tinto Limited	54461.64	147.20	0.37	Rio Tinto, BHP Join Forces on Australian Iron Ore Development
S32	South32 Limited	17766.48	4.14	4.55	N/A
SFR	Sandfire Resources	8808.87	19.09	0.10	N/A
SGM	Sims Limited	3752.56	19.72	1.54	N/A
SMR	Stanmore Resources	2740.23	2.92	-3.95	N/A
VSL	Vulcan Steel	1128.28	7.72	0.26	N/A
VUL	Vulcan Energy	2188.65	4.43	-3.28	N/A
WA1	Wa1ResourcesLtd	1367.25	18.78	2.01	N/A

➤ **Industrial stocks:**

Code	Company Name	Market Cap (\$m)	Price (\$)	Daily Price Change (%)	Newsflash
ASB	Austal Limited	3697.16	8.71	-0.57	N/A
AIA	Auckland Internation	12137.13	7.20	0.56	N/A
ALQ	ALS Ltd	11658.25	23.42	1.96	N/A
ALX	Atlas Arteria	7051.05	4.86	0.00	N/A
AZJ	Aurizon Holdings Ltd	6301.60	3.60	0.00	N/A
BXB	Brambles Limited	31533.35	23.32	0.43	N/A
CPU	Computershare Ltd	20023.76	35.25	1.82	N/A
CWY	Cleanaway Waste Ltd	5667.50	2.51	-0.79	N/A
DBI	Dalrymple Bay	2399.49	4.84	0.00	N/A
DOW	Downer EDI Limited	5338.30	8.06	0.12	N/A
DRO	Droneshield Limited	3628.25	4.08	2.77	Becoming a substantial holder
EOS	Electro Optic Sys.	1914.08	9.80	-1.21	N/A
FBU	Fletcher Building	3450.42	3.24	0.93	N/A
GWA	GWA Group Ltd	700.14	2.63	-0.38	N/A
IPH	IPH Limited	980.55	3.71	-1.07	N/A
KLS	Kelsian Group Ltd	1165.14	4.25	-0.93	N/A
MGH	Maas Group Holdings	2011.79	5.59	1.08	N/A
MMS	McMillan Shakespeare	1192.99	17.13	0.00	N/A
MND	Monadelphous Group	2905.76	29.61	1.93	N/A
NWH	NRW Holdings Limited	2522.47	5.54	0.91	N/A
QAN	Qantas Airways	15510.29	10.18	-0.68	N/A
QUB	Qube Holdings Ltd	8567.83	4.75	-1.86	Change in substantial holding
RDX	Redox Limited	1648.76	3.18	1.27	N/A
REH	Reece Limited	8931.14	14.64	0.83	N/A
RWC	Reliance Worldwide	3119.38	4.04	-0.74	N/A
SGH	SGH Limited	19385.32	47.39	-0.50	N/A
SIQ	Smartgrp Corporation	1213.67	8.95	0.00	N/A
SLX	Silex Systems	1826.31	6.69	1.83	N/A
SRG	SRG Global Ltd	1898.57	3.10	2.31	N/A
SSM	Service Stream	1329.57	2.16	0.47	N/A
TCL	Transurban Group	43575.93	13.88	-0.79	N/A
VGN	Virgin Australia	2627.49	3.33	-0.89	N/A
VNT	Ventiaservicesgroup	5098.63	6.25	1.30	N/A
WOR	Worley Limited	6600.03	13.24	1.53	N/A

➤ **Consumer stocks:**

Code	Company Name	Market Cap (\$m)	Price (\$)	Daily Price Change (%)	Newsflash
ADH	Adairs Limited	336.05	1.91	0.53	N/A
ALL	Aristocrat Leisure	35591.87	57.66	-0.40	N/A
AOV	Amotiv	1203.31	8.87	-1.33	N/A
APE	Eagers Automotive	7536.30	26.87	0.67	N/A
ARB	ARB Corporation.	2645.54	31.69	-0.03	N/A
AX1	Accent Group Ltd	562.11	0.93	-0.53	N/A
BAP	Bapcor Limited	716.16	2.16	2.37	N/A
BRG	Breville Group Ltd	4447.87	30.84	0.42	N/A
CKF	Collins Foods Ltd	1291.23	10.99	0.55	N/A
CTD	N/A	N/A	N/A	N/A	N/A
DMP	Domino Pizza Enterpr	2200.45	23.45	0.82	N/A
FLT	Flight Centre Travel	3227.98	15.18	0.40	Becoming a substantial holder
GEM	G8 Education Limited	536.23	0.69	-1.44	N/A
GYG	Guzman Y Gomez Ltd	2221.97	21.52	-0.83	N/A
HVN	Harvey Norman	8373.16	6.73	0.15	N/A
IEL	Idp Education Ltd	1686.72	6.08	0.33	N/A
JBH	JB Hi-Fi Limited	9880.51	90.00	-0.41	N/A
JIN	Jumbo Interactive	710.55	11.29	0.62	N/A
LNW	Light & Wonder Inc.	14509.51	181.01	0.16	N/A
LOV	Lovisa Holdings Ltd	3319.94	30.02	0.13	N/A
MYR	Myer Holdings Ltd	804.80	0.46	-1.08	N/A
NCK	Nick Scali Limited	2121.16	25.43	2.54	N/A
PFP	Propel Funeral	688.49	4.95	-0.80	N/A
PMV	Premier Investments	2131.20	13.06	-2.03	N/A
PWH	Pwr Holdings Limited	957.47	9.59	0.74	Ceasing to be a substantial holder
SNL	Supply Network	1519.57	34.11	-1.79	N/A
SUL	Super Ret Rep Ltd	3310.62	14.56	-0.68	N/A
TAH	TABCORP Holdings Ltd	2277.77	0.98	-1.51	Becoming a substantial holder
TLC	The Lottery Corp	11373.69	5.17	1.17	N/A
TPW	Temple & Webster Ltd	1585.22	13.04	-1.06	N/A
UNI	Universal Store	645.22	8.50	1.07	N/A
WEB	WEB Travel Group Ltd	1676.62	4.66	0.43	N/A
WES	Wesfarmers Limited	93363.99	82.99	0.85	N/A

➤ **Staple stocks:**

Code	Company Name	Market Cap (\$m)	Price (\$)	Daily Price Change (%)	Newsflash
A2M	The A2 Milk Company	6753.72	9.40	0.97	N/A
BGA	Bega Cheese Ltd	1893.34	5.92	-4.52	N/A
CBO	Cobram Estate Olives	1828.48	3.74	-2.35	N/A
COL	Coles Group	28198.33	20.94	-0.33	N/A
EDV	Endeavour	6787.84	3.82	1.06	N/A
ELD	Elders Limited	1597.87	7.40	-0.67	N/A
GNC	GrainCorp Limited	1600.56	7.18	-0.28	N/A
ING	Inghams Group	973.80	2.64	0.76	N/A
MTS	Metcash Limited	3659.63	3.30	-0.90	N/A
RIC	Ridley Corporation	997.11	2.65	-0.38	N/A
SGLV	Sunrice	1181.08	17.41	0.46	N/A
SHV	Select Harvests	717.64	4.94	-2.18	N/A
TWE	Treasury Wine Estate	4327.86	5.10	-4.85	N/A
WOW	Woolworths Group Ltd	36794.57	30.20	0.27	N/A

➤ **Healthcare stocks:**

Code	Company Name	Market Cap (\$m)	Price (\$)	Daily Price Change (%)	Newsflash
ACL	Au Clinical Labs	509.39	2.67	0.75	N/A
ANN	Ansell Limited	4868.69	33.96	0.32	N/A
BOT	Botanix Pharma Ltd	265.72	0.14	3.70	N/A
COH	Cochlear Limited	17452.23	267.41	0.21	N/A
CSL	CSL Limited	84168.92	175.28	1.03	N/A
CU6	Clarity Pharma	1339.31	3.37	-6.39	SECURE trial to continue with no modifications to protocol
CUV	Clinuvel Pharmaceut.	613.96	12.75	4.25	Managing Director Letter to Shareholders
EBO	Ebos Group Ltd	4621.28	22.57	0.13	N/A
FPH	Fisher & Paykel H.	19691.38	33.52	-0.03	N/A
HLS	Healius	740.66	0.96	-5.88	N/A
IDX	Integral Diagnostics	988.26	2.56	-3.40	N/A
IMM	Immutep Ltd	677.91	0.46	-1.09	N/A
MSB	Mesoblast Limited	3445.11	2.70	1.12	N/A
MYX	Mayne Pharma Ltd	238.86	2.90	-1.36	Notice of appeal
NAN	Nanosonics Limited	1243.72	4.03	-1.71	N/A
NEU	Neuren Pharmaceut.	2592.31	19.71	-3.71	N/A
PME	Pro Medicus Limited	22190.46	206.39	-2.83	N/A
PNV	Polynovo Limited	842.83	1.20	-1.64	N/A
REG	Regis Healthcare Ltd	2125.60	6.83	-2.84	N/A
RHC	Ramsay Health Care	8485.30	36.84	0.22	N/A
RMD	ResMed Inc.	22036.46	38.95	2.42	N/A
SHL	Sonic Healthcare	11446.55	23.28	0.52	N/A
SIG	Sigma Health Ltd	32899.55	2.86	0.35	N/A
TLX	Telix Pharmaceutical	3760.43	11.15	0.45	N/A

➤ **Bank stocks:**

Code	Company Name	Market Cap (\$m)	Price (\$)	Daily Price Change (%)	Newsflash
ANZ	ANZ Group Holdings	109656.55	37.32	2.58	N/A
BEN	Bendigo and Adelaide	6213.83	10.95	0.09	N/A
BOQ	Bank of Queensland.	4273.09	6.55	1.39	N/A
CBA	Commonwealth Bank.	255838.93	153.50	0.41	N/A
JDO	Judo Cap Holdings	2045.94	1.82	-0.55	N/A
MYS	MyState Limited	773.77	4.56	0.00	N/A
NAB	National Aust. Bank	128559.88	42.36	1.07	N/A
WBC	Westpac Banking Corp	130929.21	38.49	0.55	N/A

➤ **Diversified Financials / Insurance stocks:**

Code	Company Name	Market Cap (\$m)	Price (\$)	Daily Price Change (%)	Newsflash
AEF	Australian Ethical	597.61	4.99	-4.95	N/A
AFG	Aust Finance Grp	608.74	2.24	0.00	N/A
AMP	AMP Limited	4595.11	1.79	-1.38	N/A
ASX	ASX Limited	10198.78	52.38	-0.21	N/A
AUB	AUB Group Ltd	3559.41	30.76	0.75	N/A
CCP	Credit Corp Group	939.32	13.99	1.38	N/A
CGF	Challenger Limited	6384.04	9.08	-1.63	N/A
EQT	Equity HI	663.35	25.53	3.11	N/A
FPR	Fleetpartners Group	617.66	2.83	-1.05	N/A
GDG	Generation Dev Group	2409.85	5.91	-1.99	Change to CEO's remuneration
GQG	GQG Partners	4762.38	1.64	1.55	N/A
HLI	Helia Group Limited	1504.12	5.40	-2.17	N/A
HMC	HMC Capital Limited	1794.88	4.30	-1.15	N/A
HUB	HUB24 Ltd	7677.74	93.44	-0.48	N/A
IAG	Insurance Australia	18047.12	7.57	-0.79	N/A
IFL	Insignia Financial	3118.88	4.65	0.00	N/A
IFT	Infratil Limited	9863.21	9.63	-2.43	N/A
MAF	MA Financial Group	2085.08	10.55	-1.40	N/A
MFG	Magellan Fin Grp Ltd	1530.65	9.03	-0.88	N/A
MPL	Medibank Private Ltd	12998.90	4.71	-0.21	N/A
MQG	Macquarie Group Ltd	78952.82	206.41	-0.36	N/A
NHF	NIB Holdings Limited	3288.81	6.68	-0.89	N/A
NWL	Netwealth Group	6180.89	24.63	-2.22	N/A
PNI	Pinnacle Investment	4070.06	17.27	-3.09	N/A
PPT	Perpetual Limited	2150.01	18.51	-0.54	N/A
QBE	QBE Insurance Group	29764.89	19.74	-0.15	N/A
QRI	Qualitas Re Income	1000.18	1.59	0.00	N/A
RPL	Regal Partners Ltd	1241.18	3.47	3.27	N/A
SDF	Steadfast Group Ltd	5837.96	5.25	0.00	N/A
SOL	Soul Pattinson (W.H)	14341.97	38.01	0.69	N/A
SUN	Suncorp Group Ltd	18421.28	16.90	-0.65	N/A
TYR	Tyro Payments	536.04	0.99	-1.98	N/A
XYZ	Block Inc	3895.15	97.64	-3.04	N/A
ZIP	ZIP Co Ltd..	4167.84	3.08	-6.10	N/A

➤ **Property stocks:**

Code	Company Name	Market Cap (\$m)	Price (\$)	Daily Price Change (%)	Newsflash
ABG	Abacus Group	1036.64	1.17	0.86	N/A
APZ	Aspen Group	1297.69	5.72	0.35	N/A
ARF	Arena REIT.	1416.30	3.53	0.57	N/A
ASK	Abacus Storage King	2030.29	1.54	-0.32	N/A
BWP	BWP Group	2803.35	3.88	0.26	N/A
CHC	Charter Hall Group	11418.15	23.90	-0.99	N/A
CIP	Centuria I REIT	2104.19	3.32	-1.48	N/A
CLW	Chtr H Lwr	2879.57	4.00	-0.99	N/A
CMW	Cromwell Prop	1191.58	0.45	-2.20	Company Secretary Appointment/Resignation
CNI	Centuria Capital	1718.29	2.05	-0.97	N/A
COF	Centuria Office REIT	663.04	1.10	-0.90	N/A
CQE	Charter Hall Soc In	1143.01	3.05	-0.97	N/A
CQR	Charter Hall Retail	2324.92	4.09	2.25	N/A
DGT	DigiCo Infrastr REIT	1500.00	2.70	-0.37	N/A
DXI	Dexus Industria REIT	847.11	2.64	-1.12	N/A
DXS	Dexus	7453.67	6.87	-0.87	N/A
GMG	Goodman Group	62938.73	31.23	1.46	N/A
GOZ	Growthpoint Property	1832.96	2.43	0.00	N/A
GPT	GPT Group	10382.43	5.43	0.18	N/A
HDN	Homeco Daily Needs	2850.25	1.36	-0.73	N/A
INA	Ingenia Group	2033.84	5.00	0.20	N/A
LIC	Lifestyle Communit.	691.48	5.65	-0.53	N/A
LLC	Lendlease Group	3453.24	4.97	-0.60	N/A
MGR	Mirvac Group	8089.01	2.02	-1.46	N/A
NSR	National Storage	3875.21	2.75	-0.36	N/A
PXA	Pexagroup	2438.47	13.93	1.46	N/A
RFF	Rural Funds Group	795.03	2.05	0.49	N/A
RGN	Region Group	2725.22	2.37	0.42	N/A
SCG	Scentre Grp	21804.62	4.16	-0.48	N/A
SGP	Stockland	13468.37	5.44	-2.16	N/A
VCX	Vicinity Centres	11959.22	2.50	-3.85	N/A
WPR	Waypoint REIT	1645.39	2.52	0.00	N/A

### ➤ Tech stocks:

Code	Company Name	Market Cap (\$m)	Price (\$)	Daily Price Change (%)	Newsflash
360	Life360 Inc.	5444.05	28.75	-5.12	N/A
AD8	Audinate Group Ltd	377.79	4.32	-3.57	N/A
BRN	Brainchip Ltd	416.76	0.18	-2.70	N/A
BVS	Bravura Solution Ltd	1116.27	2.44	-2.01	N/A
CAT	Catapult Sports Ltd	1268.33	3.99	-3.39	N/A
CDA	Codan Limited	6647.31	36.20	-0.96	N/A
DDR	Dicker Data Limited	1831.68	10.12	-0.10	N/A
DTL	Data3 Limited	1518.21	9.63	-1.63	N/A
GTK	Gentrack Group Ltd	820.90	7.16	-1.92	N/A
HSN	Hansen Technologies	1121.21	5.42	-1.28	N/A
IRE	IRESS Limited	1582.11	8.49	0.24	N/A
MAQ	Macquarie Technology	1781.22	68.00	-1.61	N/A
MP1	Megaport Limited	2205.09	11.93	-3.95	N/A
NXL	Nuix Limited	605.73	1.78	-1.93	N/A
NXT	NEXTDC Limited	8061.90	12.56	-0.16	N/A
OCL	Objective Corp	1612.72	16.85	0.18	N/A
QOR	Qoria Limited	771.91	0.53	-7.02	N/A
RUL	Rpmglobal Hldgs Ltd	1098.68	4.97	0.20	N/A
SDR	Siteminder	1662.94	5.75	-2.54	N/A
TNE	Technology One	8999.36	27.20	-1.05	N/A
WBT	Weebit Nano Ltd	1043.86	4.76	-4.03	N/A
WTC	WiseTech Global Ltd	22658.94	66.73	-1.04	N/A
XRO	Xero Ltd	18280.82	103.16	-4.12	N/A

### ➤ Communication stocks:

Code	Company Name	Market Cap (\$m)	Price (\$)	Daily Price Change (%)	Newsflash
ABB	Aussie Broadband	1436.55	4.70	-4.28	N/A
CAR	CAR Group Limited	11523.31	30.04	-1.35	N/A
CNU	Chorus Limited	3505.81	8.20	1.49	N/A
EVT	EVT Limited	2054.28	12.70	0.47	N/A
NEC	Nine Entertainment	1855.34	1.18	0.43	N/A
NWS	News Corp..	1960.93	45.83	0.13	N/A
OML	Ooh!Media Limited	743.52	1.33	-3.62	N/A
REA	REA Group	24904.10	188.87	0.20	N/A
SEK	Seek Limited	8176.77	22.92	0.13	N/A
SLC	Superloop Limited	1245.61	2.40	-0.83	N/A
SPK	Spark New Zealand	3742.42	2.01	1.52	N/A
TLS	Telstra Group	54136.25	4.80	-0.21	N/A
TPG	TPG Telecom Limited	7753.97	3.95	0.00	N/A
TUA	Tuas Limited	3899.10	7.31	2.81	N/A

### ➤ Utility stocks:

Code	Company Name	Market Cap (\$m)	Price (\$)	Daily Price Change (%)	Newsflash
AGL	AGL Energy Limited.	5859.63	8.67	-0.46	N/A
APA	APA Group	11455.23	8.67	-0.46	N/A
ORG	Origin Energy	19053.59	11.02	-0.36	N/A



## Disclaimer

This document was prepared by Deep Data Analytics. Deep Data Analytics and its related bodies corporate ("DDA"), its directors and/or employees charge a subscription for this report. Deep Data Analytics as principal, its directors and/or employees and their associates may hold securities in the companies mentioned in this report. Deep Data Analytics may seek to do business with any of the companies outlined in this report and should not be considered independent. This document contains Deep Data Analytics proprietary processed data and publicly available information. The information has not been verified or audited, and you are strongly advised to make your own independent assessment and investigation in respect of any matters contained in the document, including to seek independent professional advice. The document has been provided to you for your general information purposes only. It does not consider your particular investment objectives, financial situation or other specific needs. This report has been provided to you on the condition that it is purely general advice and not to be considered as personal advice at any level.

Deep Data Analytics or their respective directors, officers, employees or shareholders makes any representation or warranty, expressed or implied, and takes no responsibility, in respect of the accuracy, reliability, completeness or thoroughness of any of the information contained in this document. Each of those parties, to the maximum extent permitted by law, expressly disclaims, and as a recipient, you expressly release each of those parties from, all liabilities, including (without limitation) liability for negligence in respect of, any part of the information contained in the document. No such parties are under any obligation to update any information in this document or correct any inaccuracies or omissions that may exist or become apparent. Neither this document nor any additional information which may subsequently be provided to a recipient shall constitute or form part of any offer, solicitation, invitation, advice or recommendation to sell or acquire any securities or assets.

Deep Data Analytics provides this financial advice as an honest and reasonable opinion held at a point in time about an investment's risk profile and merit and the information is provided by the Deep Data Analytics in good faith. The views of the adviser(s) do not necessarily reflect the views of the AFS Licensee. Deep Data Analytics has no obligation to update the opinion unless Deep Data Analytics is currently contracted to provide such an updated opinion. Deep Data Analytics does not warrant the accuracy of any information it sources from others. All statements as to future matters are not guaranteed to be accurate and any statements as to past performance do not represent future performance. Assessment of risk can be subjective. Portfolios of equity investments need to be well diversified and the risk appropriate for the investor. Equity investments in listed or unlisted companies yet to achieve a profit or with an equity value less than \$50 million should collectively be a small component of a balanced portfolio, with smaller individual investment sizes than otherwise. Investors are responsible for their own investment decisions, unless a contract stipulates otherwise. Deep Data Analytics does not stand behind the capital value or performance of any investment. Subject to any terms implied by law and which cannot be excluded, Deep Data Analytics shall not be liable for any errors, omissions, defects or misrepresentations in the information (including by reasons of negligence, negligent misstatement or otherwise) or for any loss or damage (whether direct or indirect) suffered by persons who use or rely on the information. If any law prohibits the exclusion of such liability, Deep Data Analytics limits its liability to the re-supply of the Information, provided that such limitation is permitted by law and is fair and reasonable.

Copyright © Deep Data Analytics. All rights reserved. This material is proprietary to Deep Data Analytics and may not be disclosed to third parties. Any unauthorized use, duplication or disclosure of this document is prohibited. The content has been approved for distribution by Deep Data Analytics (ABN 67 159 532 213 AFS Representative No. 1282992) which is a corporate approved representative of BR Securities (ABN 92 168 734 530 and holder of AFSL No. 456663). Deep Data Analytics is the business name of ABN 67 159 532 213.